

MAP OF SURVEY
for:

LEE JAGER

JAN. 8, 1992

LOT 15, BLOCK 4, DIXIE-DALE ADDITION
JAMES L. MULKEY D.L.C. No. 63
N.E. 1/4 SECTION 27, T.11S., R.5W., W.M.,
BENTON COUNTY, OREGON

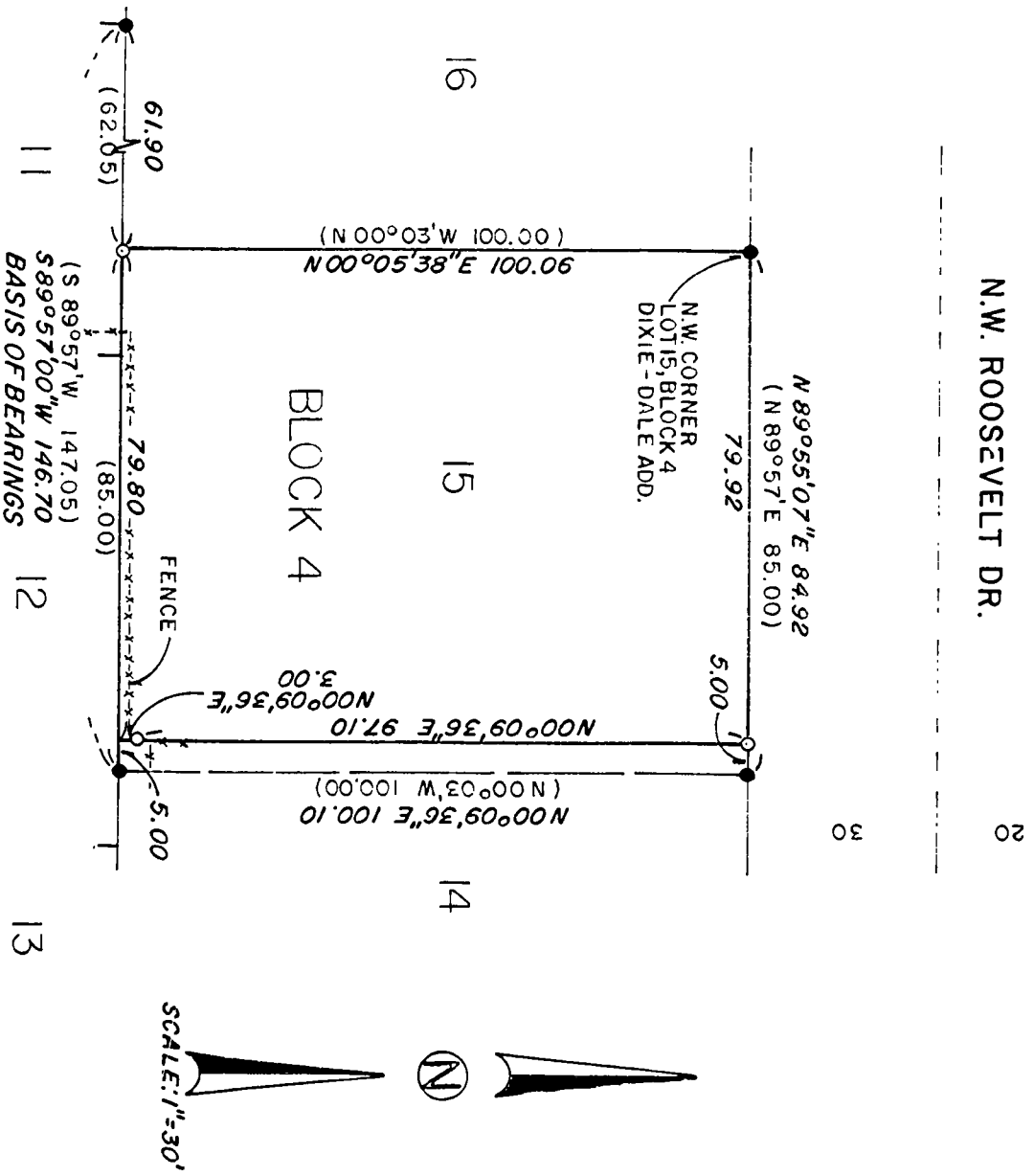
Benton County
Surveyor's Office

C.S. FILE NO. B582

FILE NO. DATE 1-21-1992

FILE SIZE 8 1/2 x 14

N.W. ROOSEVELT DR.



LEGEND

- FOUND 5/8" IRON ROD
- SET 5/8" X 30" IRON ROD WITH YELLOW PLASTIC CAP STAMPED "DARRYL HARMS, P.L.S. 1079"
- () RECORD DATA FROM DIXIE-DALE ADD. PLAT

NARRATIVE

THE PURPOSE OF THIS SURVEY IS TO MONUMENT THE PREVIOUSLY ADJUSTED LINE BETWEEN LOTS 14 & 15, BLOCK 4, DIXIE-DALE ADDITION AND TO REPLACE THE SOUTHWEST CORNER OF LOT 15. FOUND MONUMENTS WERE HELD IN POSITION AND THE S.W. CORNER OF LOT 15 REPLACED BY PROPORTION BETWEEN THE S.E. CORNER OF LOT 15 AND THE N.W. CORNER OF LOT 11.

DARRYL W. HARMS, P.L.S.
P.O. BOX 1051
CORVALLIS, OR. 97339
PHONE: (503) 758-5579

REGISTERED
PROFESSIONAL
LAND SURVEYOR

Darryl W. Harms

OREGON
JULY 30, 1976
DARRYL W. HARMS
1079