

**Benton County  
 Surveyor's Office**

C.S. FILE NO. 8585  
 FILING DATE 1-23-1992  
 FILE SIZE 18 X 24

SECTION CORNER  
 FD. STONE 6"X8" WITH LEAD &  
 TACK PLUG, AS DESCRIBED IN  
 BENTON COUNTY REESTAB #3598  
 RESTORATION FILE.

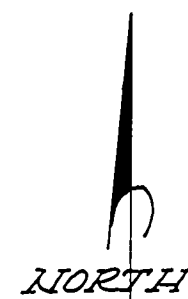
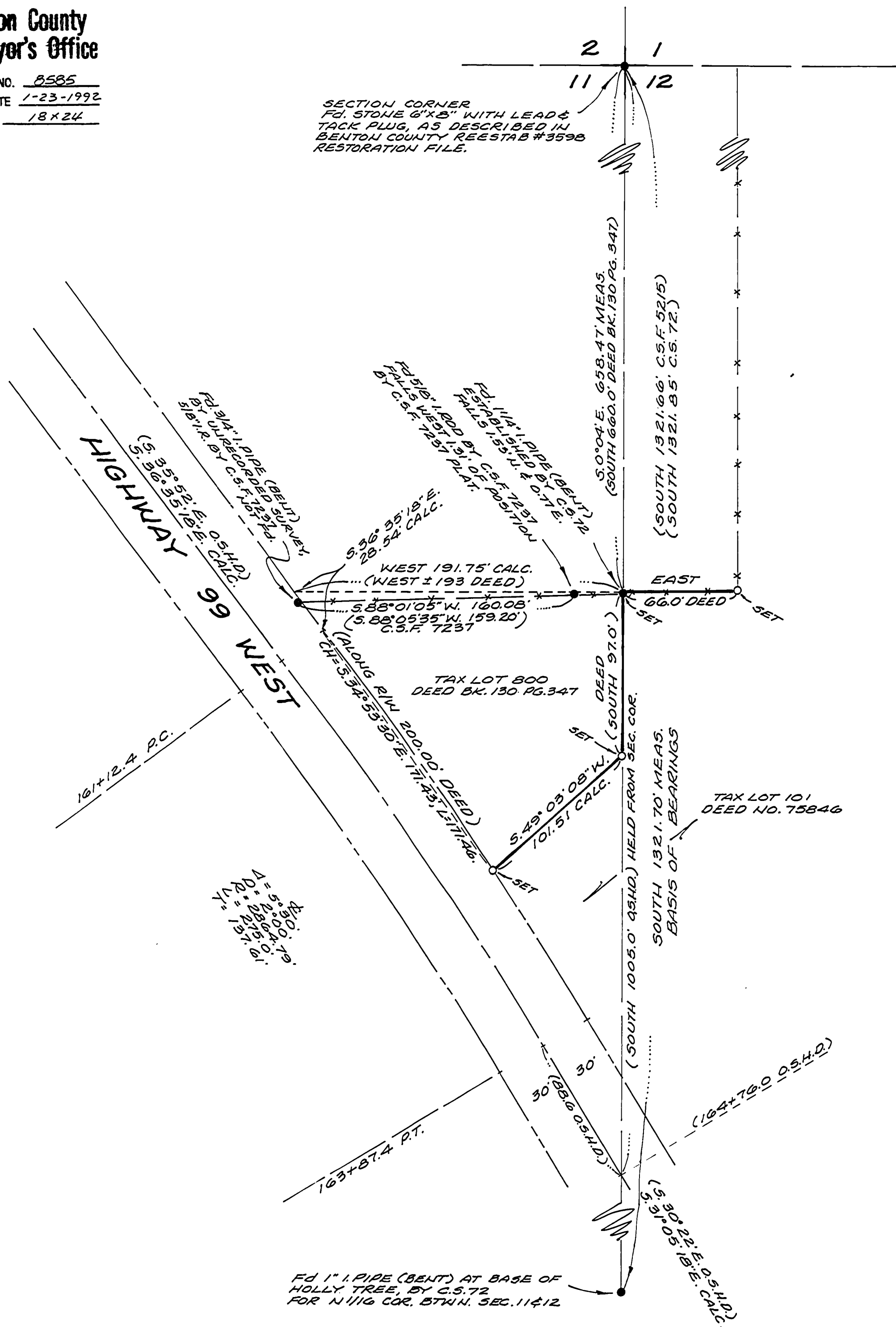
**NARRATIVE OF SURVEY**

THE PURPOSE OF THIS SURVEY IS TO MONUMENT THE LINE BETWEEN TAX LOTS 101 AND 800. THE PRIMARY DEED USED IN THIS SOLUTION IS OF DEED BOOK 130, PAGE 347, OF BENTON COUNTY OREGON DEED RECORDS.

THE EAST LINE OF TAX LOT 800 IS CONTROLLED BY THE LINE BETWEEN SECTIONS 11 AND 12. FROM THE DEED POSITION FOR THE N.E. CORNER OF TAX LOT 800, THE S.E. CORNER WAS MONUMENTED AT DEED CALL AND DISTANCE (SOUTH 97.0'). THE SOUTH CORNER OF TAX LOT 800 IS MONUMENTED ON THE NORTHERLY RIGHT-OF-WAY OF HIGHWAY 99 WEST AT DEED CALL FROM THE NORTHWEST CORNER OF DEED OF BOOK 130, PAGE 347 (ALONG RIGHT-OF-WAY 200.0').

THE ALIGNMENT AND RIGHT-OF-WAY OF HIGHWAY 99 WEST IS BASED UPON INFORMATION FROM O.S.H.D. DRAWING NO. 38 20-3 (1"=100') "WESTSIDE HIGHWAY - BENTON COUNTY, MONROE TO JUNCTION CITY 1919". FROM THIS INFORMATION, THE DISTANCE FROM THE SECTION CORNER (SOUTH 1005.0') TO INTERSECTION OF CENTERLINE WAS HELD. THIS INTERSECTION IS REPORTED TO BE AT STA. 164+76.0 O.S.H.D. THE NORTH LINE OF SECTION 12 IS REPORTED TO BE AT STA. 152+44.0 O.S.H.D., WEST 716.0' OF THE SECTION CORNER. A MATHEMATICAL SOLUTION, HELD THE REPORTED CENTERLINE STATIONS AND DISTANCES FROM THE SECTION CORNER, RESULTS IN AN ANGULAR ROTATION OF O.S.H.D. REPORTED BEARINGS OF 0°43'18" COUNTER CLOCK-WISE.

THE BASIS OF BEARINGS OF THIS SURVEY IS THE LINE BETWEEN THE MONUMENTED CORNER OF SECTION 1, 2, 11 AND 12 AND THE N.1116 CORNER BETWEEN SECTION 11 AND 12, AS SOUTH. CORNERS INDICATED AS SET ARE MONUMENTED WITH A 5/8" DIAM. IRON ROD, 30" LONG, WITH A YELLOW PLASTIC CAP STAMPED "SKINNER PLS 869".



**RECORD OF SURVEY**  
 for  
**dba GIBSON & GIBSON**

LOCATED IN N.E.1/4 SEC.11 & N.W.1/4 SEC.12, T.155., R.5W., W.M.  
 BENTON COUNTY, OREGON  
 ASSESSOR MAP 15-5-11 AA, TAX LOT 800  
 ASSESSOR MAP 15-5-12, TAX LOT 101

SCALE 1" = 50 FEET

JANUARY 21, 1992



**SKINNER & ASSOCIATES, INC.**  
 RICHARD C. SKINNER, LAND SURVEYOR  
 P.O. BOX 321, JUNCTION CITY, OR 97448  
 (503) 998-2453

