

DRAWING NUMBER
8588

PLAN HOLD CORPORATION • IRVINE, CALIFORNIA
REORDER BY NUMBER 075AR
POSITION EDGE OF PRINT ON THIS LINE

DRAWING NUMBER
8588

PLAN HOLD CORPORATION • IRVINE, CALIFORNIA
REORDER BY NUMBER 075AR
POSITION EDGE OF PRINT ON THIS LINE

8588
2-18-92

**Benton County
Surveyor's Office**

C.S. FILE NO. 8588
FLING DATE 2-18-1992
FILE SIZE 11x17

PROPERTY LINE ADJUSTMENT FOR ROBERT COLLETT NO.LLA 92-0001
IN THE PRIOR SCOTT D.L.C. NO.44, NE.1/4 SEC.4, T.12 S., R.5W., W.M.
CITY OF CORVALLIS, BENTON COUNTY, OREGON, FEBRUARY 12, 1992

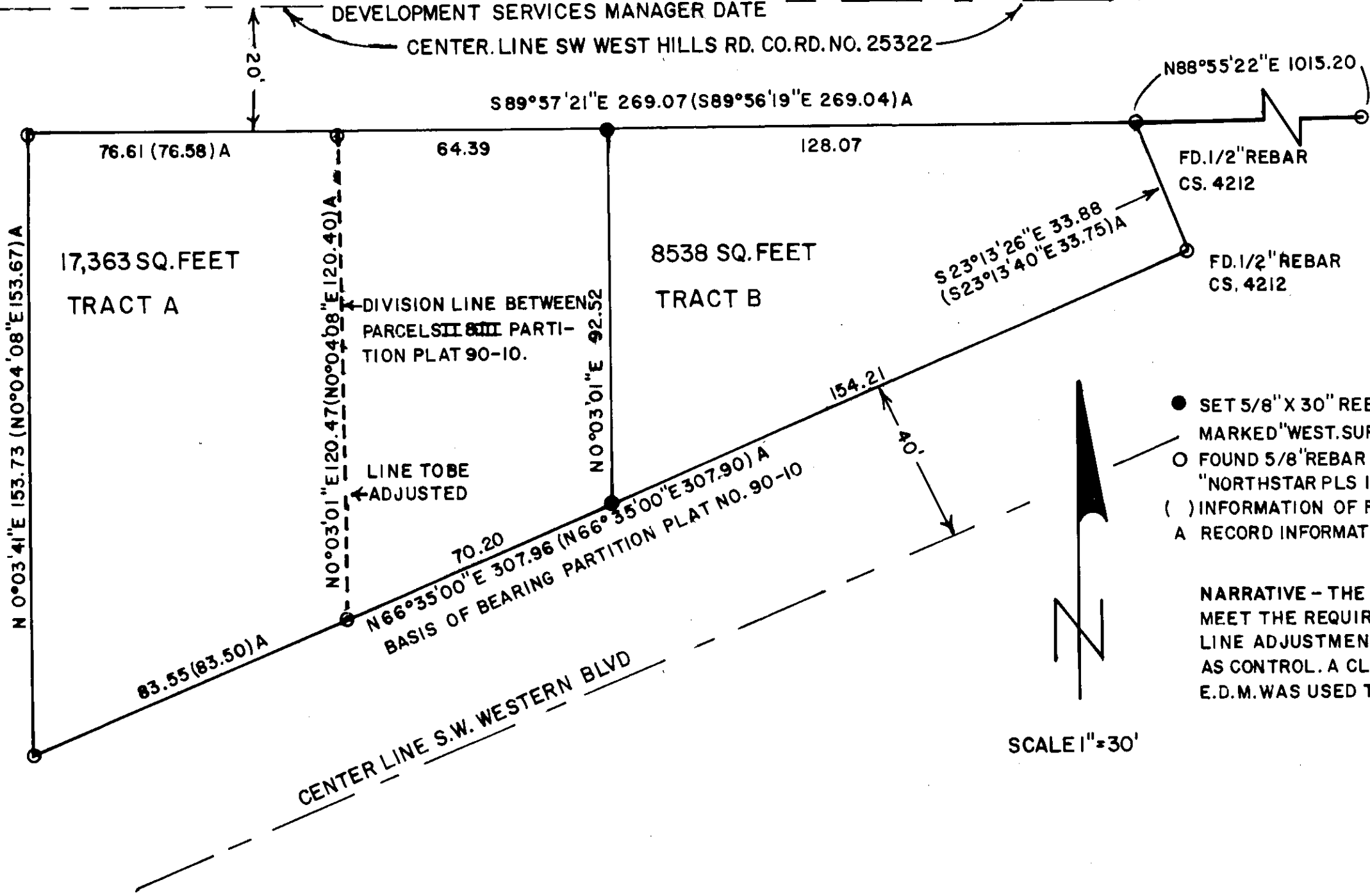
WESTERN SURVEYING 1334 MAIN STREET, PHILOMATH, OREGON PHONE (503) 929-3355

REGISTERED
PROFESSIONAL
LAND SURVEYOR
John D. Howell
OREGON
JULY 18, 1980
JOHN D. HOWELL
1901

APPROVALS
[Signature] 2-18-92
CORVALLIS CITY ENGINEER DATE

[Signature] 2-18-92
DEVELOPMENT SERVICES MANAGER DATE

CENTER LINE SW WEST HILLS RD. CO.RD.NO. 25322



FD. 3/4" BENTON COUNTY
BRASS CAP AT THE NE.
CORNER OF D.L.C. NO. 44
AS PER COUNTY CORNER
RESTORATION 3787.

- SET 5/8" X 30" REBAR WITH A YELLOW PLASTIC CAP MARKED "WEST.SURV.LS.1901"
- FOUND 5/8" REBAR WITH A RED PLASTIC CAP MARKED "NORTHSTAR PLS 1823" UNLESS NOTED OTHERWISE
- () INFORMATION OF RECORD
- A RECORD INFORMATION FROM PARTITION PLAT NO.90-10

NARRATIVE - THE PURPOSE OF THIS SURVEY IS TO MONUMENT AND MEET THE REQUIREMENTS OF THE CITY OF CORVALLIS FOR PROPERTY LINE ADJUSTMENT NO.92-0001. PARTITION PLAT NO.90-10 WAS USED AS CONTROL. A CLOSED RANDOM TRAVERSE USING A THEODOLITE AND E.D.M. WAS USED TO DO THIS SURVEY.

SCALE 1"=30'