

# RECORD OF SURVEY for

## JEAN HEATH & MARY ALMEIDA

IN THE JAMES A. BENNETT DONATION LAND CLAIM NO. 45, IN THE SOUTHWEST  
1/4 OF SECTION 10, TOWNSHIP 12 SOUTH, RANGE 5 WEST, WILLAMETTE MERIDIAN,  
CITY OF CORVALLIS, BENTON COUNTY, OREGON.

FEBRUARY 21, 1992

SCALE: 1" = 100'

Benton County  
Surveyor's Office

C.S. FILE NO. 8591  
FILING DATE 2-26-1992  
FILE SIZE 18x24

### NARRATIVE

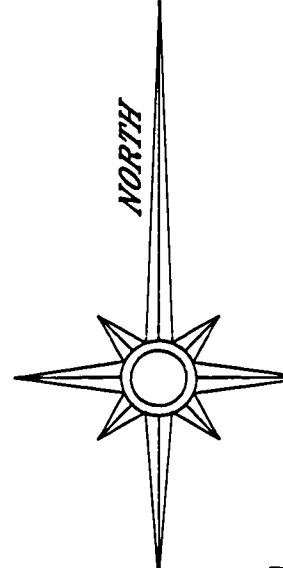
THE PURPOSE OF THIS SURVEY IS TO LOCATE AND MONUMENT THE SOUTHEASTERLY BOUNDARY LINE OF TAX LOT 900 AS DESCRIBED IN DEED M-131308-91. THE BASIS OF BEARINGS, AS SHOWN, WAS ESTABLISHED BY HOLDING FOUND MONUMENTS AT POINTS 'D' AND 'E' AS PER CS 6623 AND M-131308-91.

POINT (1) WAS ESTABLISHED AT RECORD BEARING AND DISTANCE FROM THE FOUND MONUMENT AT THE NW CORNER OF D.L.C. NO. 48, AS SHOWN. NO MONUMENT WAS SET AT THIS POINT. SET MONUMENT AT POINT (2) WAS ESTABLISHED AT RECORD DISTANCE AND ON LINE BETWEEN POINT (1) AND THE FOUND AND HELD MONUMENT AT POINT 'A'. RECORD DISTANCE HELD IS AS PER M-131308-91 AND CS 6623.

SET MONUMENTS AT POINTS (3), (4) AND (5) WERE ESTABLISHED AT RECORD DISTANCE OF 125.00' FROM AND PARALLEL TO THE CENTERLINE OF THAT CERTAIN TRACT DESCRIBED IN DEED M-87674-87 AND M-61222.

POINT (5) TO POINT 'G' IS A CLOSING LINE THAT APPEARS TO HAVE BEEN OMITTED FROM M-131308-91. POINT 'G' WAS HELD AS FOUND PER DEED CALL, M-131308-91. THIS CLOSING LINE IS REQUIRED IN ORDER TO MAINTAIN THE RECORD DISTANCE OF 125.00' FROM SAID CENTERLINE OF SAID M-87674-87 AND M-61222.

DEED M-131308-91 CALLS THE NORTHEASTERLY LINE OF SAID DEED M-61222 (M-87674-87), THEREFORE THE CENTERLINE OF M-87674-87, M-61222 WAS ESTABLISHED PER DEED CALLS AND THE SOUTHEASTERLY LINE OF M-131308-91 WAS ESTABLISHED AT RECORD, 125.00' DISTANCE AND PARALLEL TO THIS CENTERLINE.



N 68°17'21" E, 198.03'  
(N 68°18' E, 196.94', CS 6623)  
(N 68°16'46" E, 198.07', CS 6925)  
{ N 68°18' E, 198.07', M-131308-91 }

N 83°32'13" E, 146.14'  
(N 83°33' E, 146.12', CS 6623)  
(N 83°32'19" E, 146.16', CS 6925)  
{ N 83°33' E, 146.12', M-131308-91 }

BASIS OF BEARINGS  
PER CS 6623 & M-131308-91  
N 43°14'00" E, 205.43'  
(N 43°14' E, 205.33', CS 6623)  
{ N 43°14' E, 205.33', M-131308-91 }  
(N 43°09'42" E, 204.94', CS 6925)

N 48°41'00" W, 166.70'  
(N 48°41' W, 166.70', CS 6623)  
{ N 48°41' W, 166.70', M-131308-91 }

N 48°05'00" W, 35.18'  
(N 48°05' W, 35.18', CS 6623)  
(N 48°06'40" W, 35.16', CS 6925)  
{ N 48°05' W, 35.18', M-131308-91 }

N 46°12'57" E, 53.02'  
(N 46°28' E, 53.00', CS 6623)  
(N 46°14'51" E, 52.98', CS 6925)  
{ N 46°28' E, 53.00', M-131308-91 }

EAST, 486.82'  
{ EAST, 486.46' }  
{ M-131308-91 }

N 35°31'32" W, 9.90'  
(N 35°11' W, 9.97', CS 6623)  
(N 35°30'35" W, 9.95', CS 6925)  
{ N 35°11' W, 9.97', M-131308-91 }

N 49°35'18" E, 599.40', CS 6925  
(N 49°35' E, 598.95', CS 6623)  
N 49°32'14" E, 599.85'  
(N 49°32'14" E, 599.85', CS 6623)

N 49°32'14" E, 199.20'  
(N 49°35' E, 199.20', CS 6623)  
{ N 49°32'14" E, 199.20', M-131308-91 }

N 89°54' E, 404.49', M-131308-91  
(N 89°54' E, 404.50', CS 6623)

N 45°45'00" E, 135.70'  
{ N 45°45' E, 135.70' }  
{ M-87674-87 }

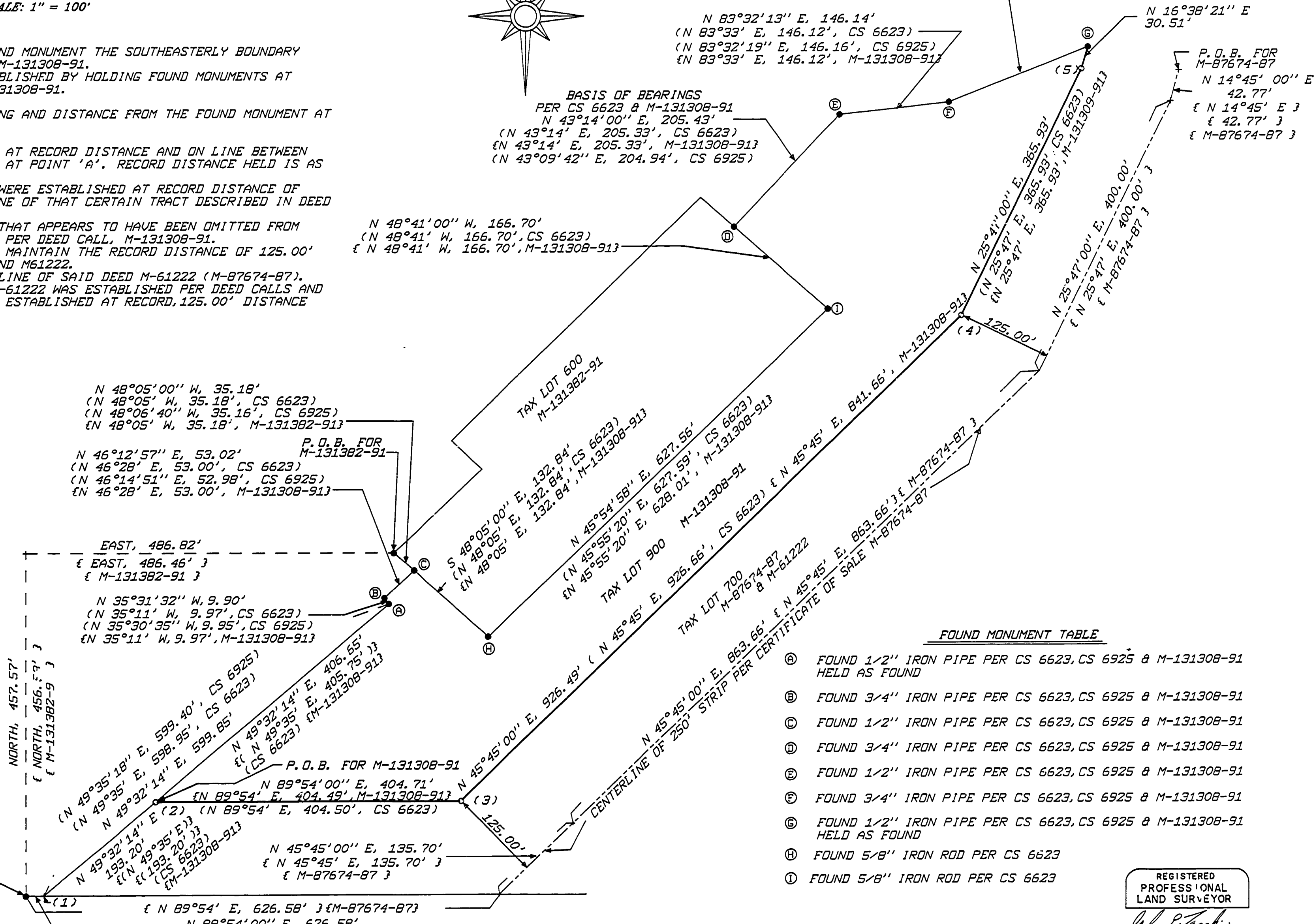
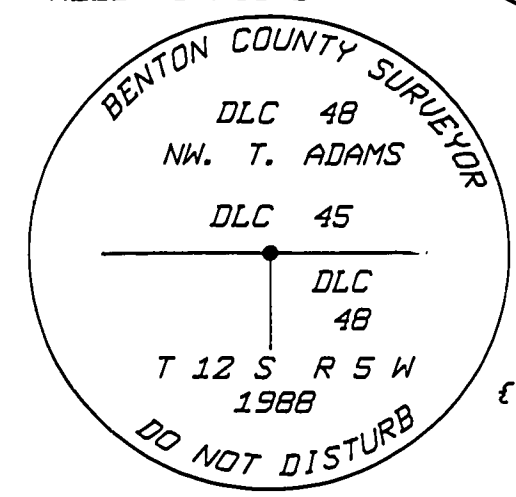
{ N 89°54' E, 626.58' } { M-87674-87 }  
N 89°54'00" E, 626.58'

N 89°54'00" E, 24.09'  
(N 89°54'00" E, 24.09', CS 6623)  
{ N 89°54'00" E, 24.09' } { M-131308-91 }

### LEGEND

- FOUND MONUMENT AS NOTED AND SHOWN
  - SET 5/8" x 30" IRON ROD W/YELLOW PLASTIC CAP MARKED "J TACCHINI PLS 2267"
  - ( ) RECORD DATA PER SURVEYS OF RECORD AS NOTED AND SHOWN
  - { } RECORD DATA PER DEEDS OF RECORD AS NOTED AND SHOWN
- ALL PIPE MONUMENTS SHOWN ARE MEASURED INSIDE DIAMETER  
P.O.B. = POINT OF BEGINNING

FOUND 3 1/4" BRASS CAP PER CORNER RESTORATION NO. 3527 HELD AS FOUND



### FOUND MONUMENT TABLE

- (A) FOUND 1/2" IRON PIPE PER CS 6623, CS 6925 & M-131308-91 HELD AS FOUND
- (B) FOUND 3/4" IRON PIPE PER CS 6623, CS 6925 & M-131308-91
- (C) FOUND 1/2" IRON PIPE PER CS 6623, CS 6925 & M-131308-91
- (D) FOUND 3/4" IRON PIPE PER CS 6623, CS 6925 & M-131308-91
- (E) FOUND 1/2" IRON PIPE PER CS 6623, CS 6925 & M-131308-91
- (F) FOUND 3/4" IRON PIPE PER CS 6623, CS 6925 & M-131308-91
- (G) FOUND 1/2" IRON PIPE PER CS 6623, CS 6925 & M-131308-91 HELD AS FOUND
- (H) FOUND 5/8" IRON ROD PER CS 6623
- (I) FOUND 5/8" IRON ROD PER CS 6623

REGISTERED PROFESSIONAL LAND SURVEYOR  
*John P. Tacchini*  
OREGON  
JOHN P. TACCHINI  
JAN. 15, 1987  
2267