

8594

8594

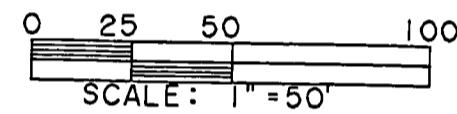
PROPERTY LINE ADJUSTMENT

for
N. BILL GALLOWAY

in
**JONATHAN MASON DLC 42
NE 1/4 SECTION 3
T 12 S, R 6 W, W.M.**

BENTON COUNTY, OREGON

MARCH 5, 1992



NARRATIVE

The purpose of this survey was to adjust the property line between Tax Lots 100 and 200, Map 12-6-3A. The land designated as TL 200 was created by instrument no. M-37617 in January, 1973, having been originally monumented by CS 5326 in August, 1972. We found 3 of the 4 original 5/8" rods as shown. I computed the most westerly corner of TL 200 by distance-distance intersection from the found monuments ① and ② and remonumented it. The new property lines were designed so that the house and septic drain field are wholly within the property and comply with County setback criteria. The barn belongs to N. Bill Galloway, the owner of TL 100. The E'y line, along the road, was computed to yield a closed figure for area comps. I computed the road angle point ③ by holding record interior angle and distance from found monument ② relative to found monument ①.

The 3/4" pipe at ⑤ was set by CS 5326 at the intersection of the DLC line with the north line of Mary's River Estates Road as a corrected monument for the SW corner of Lot 1, Blk 4, MARY'S RIVER ESTATES. Since this corner is on the exterior of the subdivision I feel the corrected monument should hold over the original.

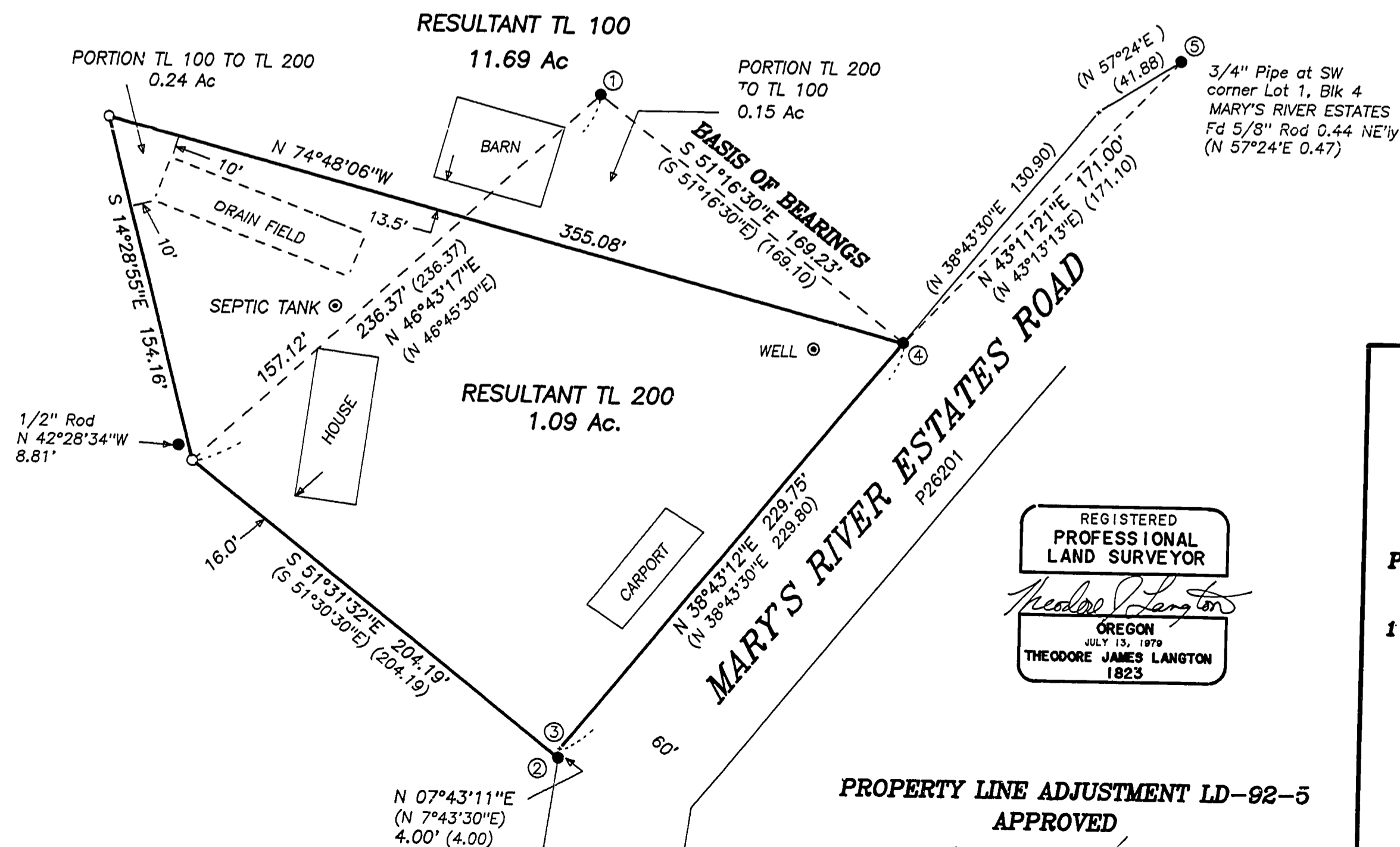
LEGEND

-Found monument: 5/8" iron rod unless otherwise shown.
-Set monument: 5/8" x 30" rebar with red plastic cap stamped "NORTHSTAR PLS 1823".
- ().....Record data from CS 5326.

**Benton County
Surveyor's Office**

C.S. FILE NO. 8594
FILING DATE 3/11/1992
FILE SIZE 15 x 18

NORTHSTAR SURVEYING, INC.
402 N.W. 5th Street
Corvallis, Oregon 97330
Phone: 503-757-9050



REGISTERED
PROFESSIONAL
LAND SURVEYOR
Theodore Langton
OREGON
JULY 13, 1979
THEODORE JAMES LANGTON
1823

**PROPERTY LINE ADJUSTMENT LD-92-5
APPROVED**

Paul M. Lavin 3-11-92
planning official date

