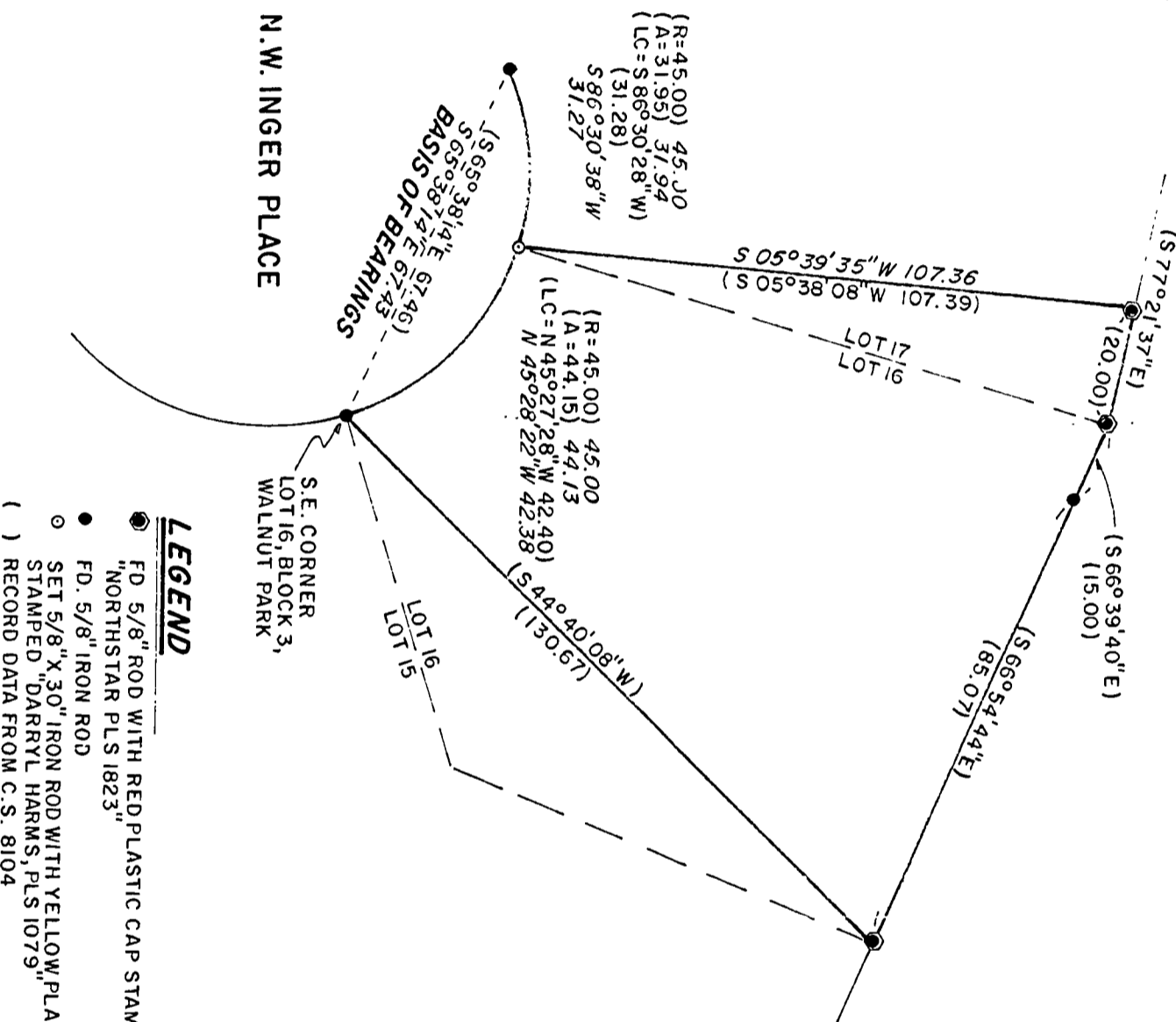


MAP OF SURVEY  
for  
**KEVIN & LORA HEDIGER**  
APRIL 24, 1992  
LOTS 16 & 17, BLOCK 3, WALNUT PARK IN  
THE N.W. 1/4, SECTION 28, T.11S., R.5W., W.M.,  
BENTON COUNTY, OREGON

Benton County  
Surveyor's Office  
C.S. FILE NO. B620  
FILING DATE 6-9-1992  
FILE SIZE 8 1/2 x 14



- LEGEND**
- FD 5/8" ROD WITH RED PLASTIC CAP STAMPED "NORTHSTAR PLS 1823"
  - FD 5/8" IRON ROD
  - SET 5/8" X .30" IRON ROD WITH YELLOW PLASTIC CAP STAMPED "DARRYL W. HARMS, PLS 1079"
  - ( ) RECORD DATA FROM C.S. 8104

**NARRATIVE**

THE PURPOSE OF THIS SURVEY IS TO REPLACE THE S.W. CORNER OF LOT 16 WHICH WAS PROBABLY REMOVED DURING HOUSE CONSTRUCTION. I HELD IN POSITION THE MONUMENTS FOUND ON THE NORTH LINE OF N.W. INGER PLACE AND USED DIMENSIONS RELATIVE TO C.S. 8104 DATA TO RESET THE S.W. CORNER OF LOT 16 RATHER THAN BY PROPORTION SINCE THE ORIGINAL LOT CORNER MONUMENT WAS IN POSITION AT THE TIME OF C.S. 8104.

DARRYL W. HARMS, P.L.S.  
P.O. BOX 1051  
CORVALLIS, OR. 97339  
PHONE: (503) 758-5579

REGISTERED  
PROFESSIONAL  
LAND SURVEYOR

*Darryl W. Harms*

OREGON  
DARRYL W. HARMS  
1079

