

8664

8664

3004
12-22-92

RECORD OF SURVEY

for RAND W. COOPER

In the SE 1/4 SECTION 12, T12S, R6W, W.M.
and the HENRY PENLAND D.L.C. NO. 45
PHILOMATH, BENTON COUNTY, OREGON
DECEMBER 22, 1992

Benton County
Surveyor's Office

C.S. FILE NO. 8664
FILING DATE 12-29-1992
FILE SIZE 14x17

LOT LINE ADJUSTMENT APPROVAL

Dick Clark 12/28/92
City of Philomath Date

NARRATIVE

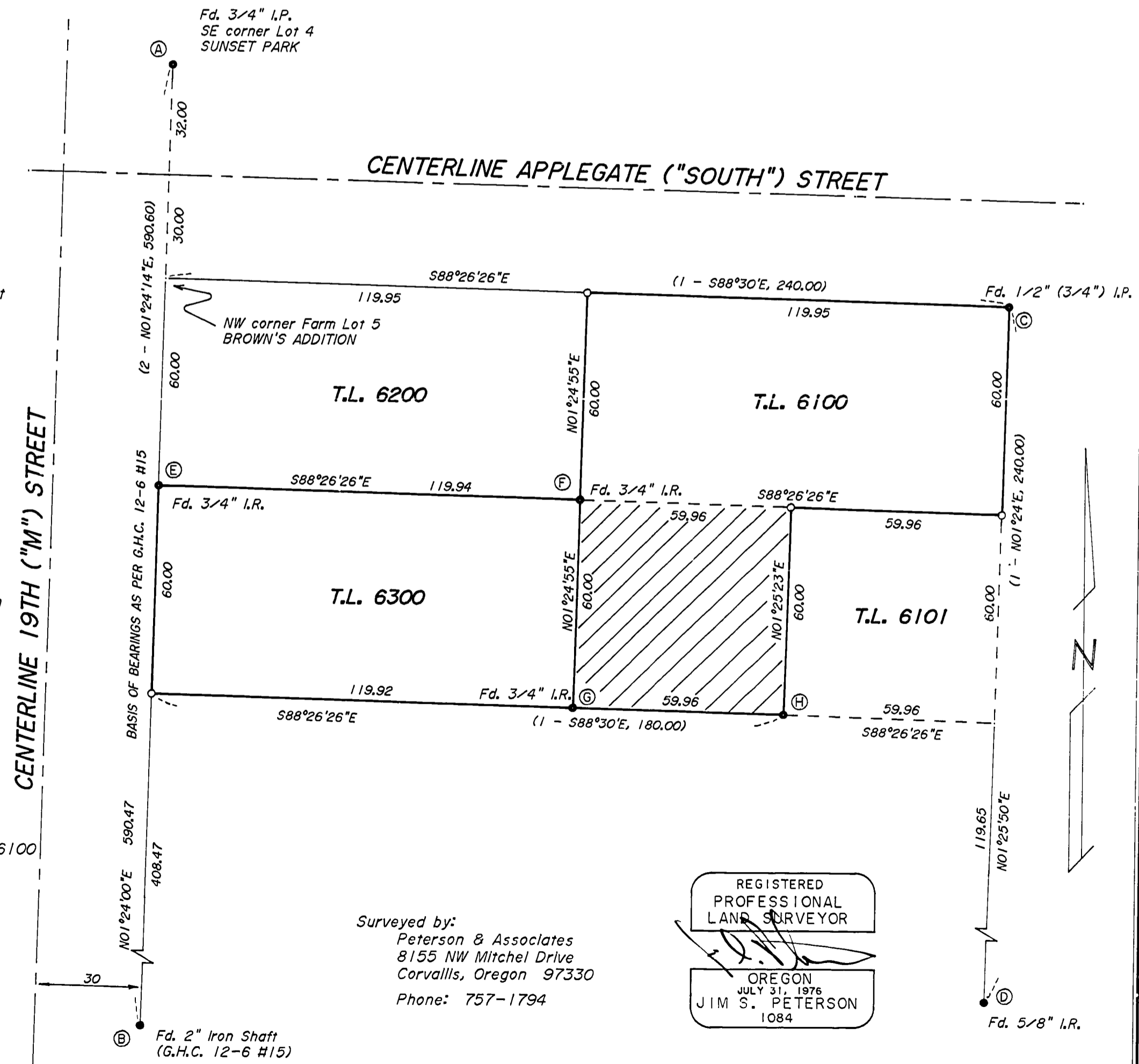
The purpose of this survey is to define the adjusted boundaries of Tax Lots 6100 and 6300 of Tax Map 12-6-12DA, as per City of Philomath Lot Line Adjustment No. LLA-92-1. Document No. M-155428-92 of the Benton County Deed Records defines the current boundaries of said Tax Lots.

Monuments found at points A and B were held as control for the East line of 19th ("M") Street. The NW corner of Farm Lot 5, BROWN'S ADDITION to Philomath was computed at record distance (62.00) from point A, as per C.S. 8202. Monuments found at points C and D (as per C.S. 5584) were held as control for the East line of Tax Lot 6100. The monument found at point C and the computed position for the NW corner of Farm Lot 5 were held as control for the South line of Applegate ("South") Street, and the North line of Farm Lot 5.

No record was found of the 3/4" Iron rods found at points E, F, and G. The rod found at point E is in correct position. The rod found at point F is N28°08'E, 0.13 of correct position. The rod found at point G is N66°46'E, 0.10 of correct position.

C.S. 3494 notes setting a 1/2" iron pipe at point H. C.S. 5584 notes setting a 3/4" iron pipe at the same point. There is currently a fence corner post set in concrete at this point, at the base of which we detect an iron monument (with a metal detector) under the concrete.

- Monument found as noted
 - Set 5/8" X 30" iron rod with plastic cap (LS 1084)
 - (1) Data of record as per C.S. 5584
 - (2) Data of record as per C.S. 7470
 - G.H.C. Galloway Hard Copy
 - I.R. Iron Rod
 - I.P. Iron Pipe
 - ▨ Portion of Tax Lot 6300 being transferred to Tax Lot 6100
- Iron pipe diameters are inside measure



Surveyed by:
Peterson & Associates
8155 NW Mitchel Drive
Corvallis, Oregon 97330
Phone: 757-1794

REGISTERED
PROFESSIONAL
LAND SURVEYOR
Jim S. Peterson
OREGON
JULY 31, 1976
JIM S. PETERSON
1084