

DRAWING NUMBER  
**8670**

PLAN HOLD CORPORATION • IRVINE, CALIFORNIA  
REORDER BY NUMBER 075AR

DRAWING NUMBER  
**8670**

PLAN HOLD CORPORATION • IRVINE, CALIFORNIA  
REORDER BY NUMBER 075AR

C.S. 8670

### RALPH ALLEN SURVEY

PORTIONS OF LOTS 6, 7, & 8, BLK. 1, PLAT OF "OAK CREEK ACRES"  
IN SEC. 3, T. 12 S., R. 5 W., W.M.  
BENTON COUNTY, OREGON

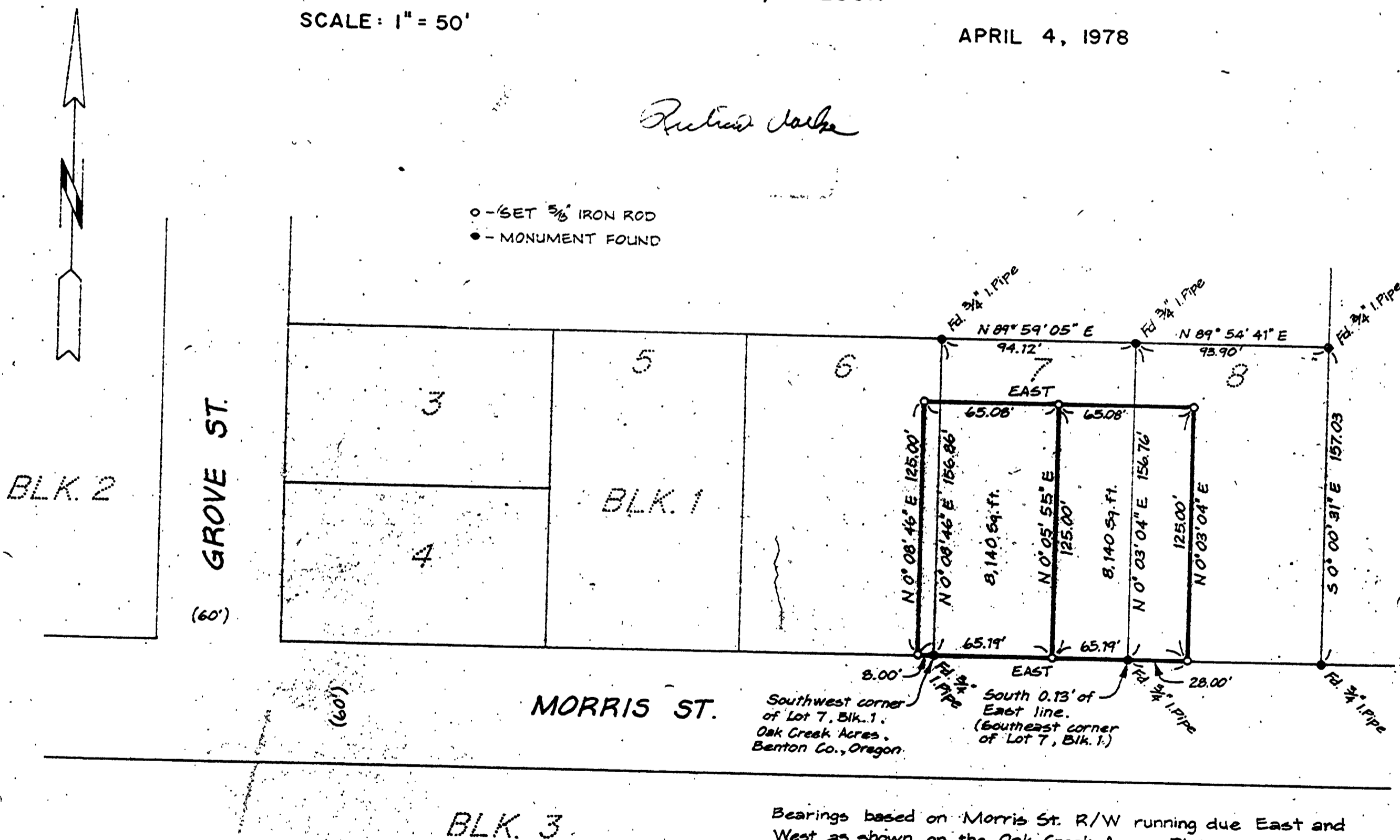
**Benton County  
Surveyor's Office**

C.S. FILE NO. 8670  
FILING DATE 1-13-1993  
FILE SIZE 14x17

SCALE: 1" = 50'

APRIL 4, 1978

*Richard Dalke*



1-13-1993

NOTE: ALTHOUGH THIS MAP DOES NOT COMPLY WITH BENTON COUNTY MAP STANDARDS IT HAS BEEN ASSIGNED A COUNTY SURVEY NUMBER IN ORDER TO MAKE REFERENCE TO THE MONUMENTS SHOWN. THE MAP HAS BEEN IN-K+D ENGINEERING'S FILES. THE MAP WAS DONE BY RICHARD DALKE.

78-65



Bearings based on Morris St. R/W running due East and West as shown on the Oak Creek Acres Plat.