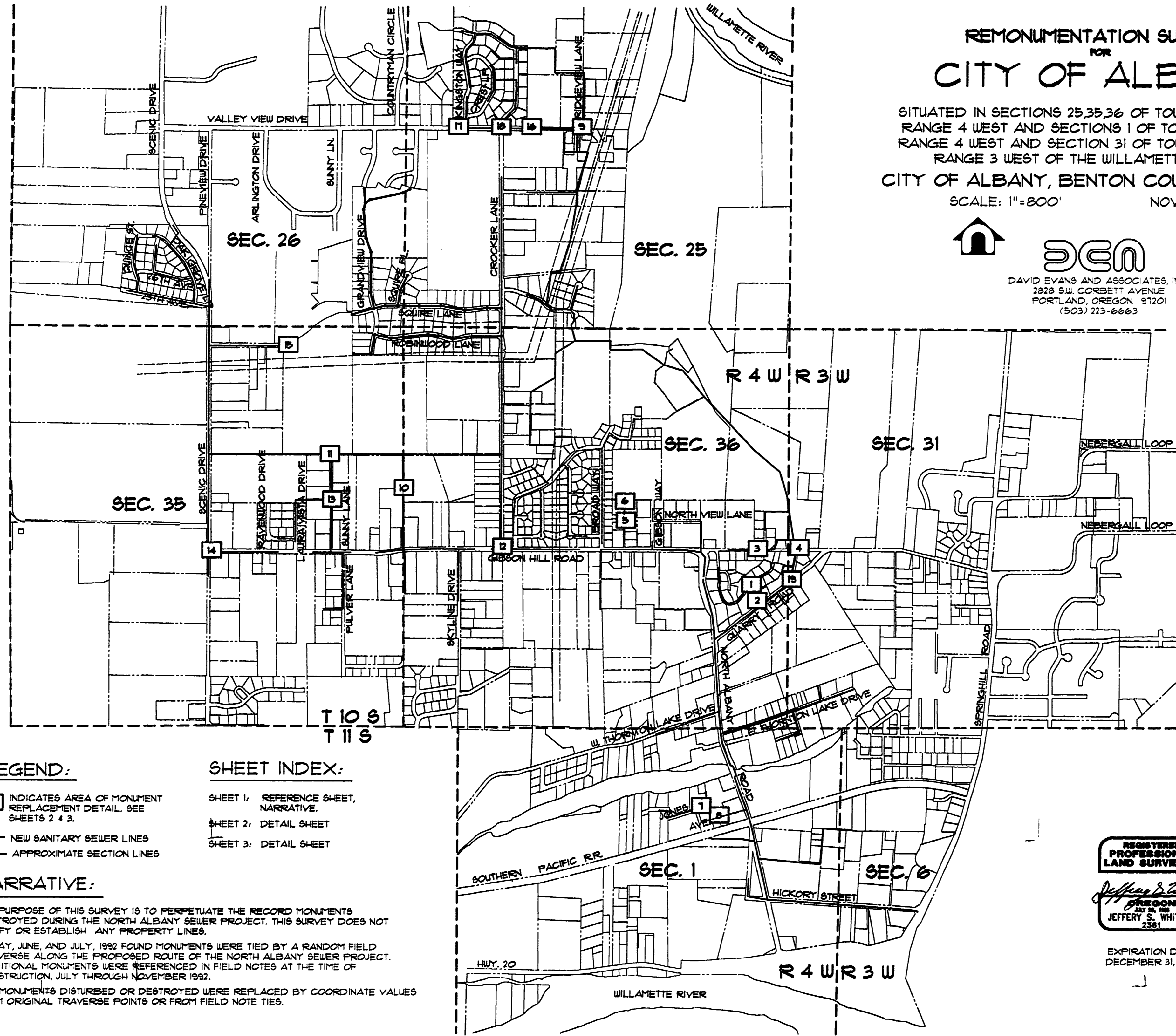


DRAWING NUMBER
8678
PLAN HOLD CORPORATION • IRVINE, CALIFORNIA
RECORDER BY NUMBER 075AR
POSITION EDGE OF PRINT ON THIS LINE

DRAWING NUMBER
1/3
PLAN HOLD CORPORATION • IRVINE, CALIFORNIA
RECORDER BY NUMBER 075AR
POSITION EDGE OF PRINT ON THIS LINE

DRAWING NUMBER
1/3
PLAN HOLD CORPORATION • IRVINE, CALIFORNIA
RECORDER BY NUMBER 075AR
POSITION EDGE OF PRINT ON THIS LINE

DRAWING NUMBER
8678
PLAN HOLD CORPORATION • IRVINE, CALIFORNIA
RECORDER BY NUMBER 075AR
POSITION EDGE OF PRINT ON THIS LINE



**REMONUMENTATION SURVEY
FOR
CITY OF ALBANY**

SITUATED IN SECTIONS 25, 35, 36 OF TOWNSHIP 10 SOUTH,
RANGE 4 WEST AND SECTIONS 1 OF TOWNSHIP 11 SOUTH,
RANGE 4 WEST AND SECTION 31 OF TOWNSHIP 10 SOUTH,
RANGE 3 WEST OF THE WILLAMETTE MERIDIAN
CITY OF ALBANY, BENTON COUNTY, OREGON
SCALE: 1"=800' NOVEMBER 6, 1992

DAVID EVANS AND ASSOCIATES, INC.
2828 S.W. CORBETT AVENUE
PORTLAND, OREGON 97201
(503) 273-6663

Benton County
Surveyor's Office
C.S. FILE NO. 8678
FILING DATE 2-17-1993
FILE SIZE 18x24

LEGEND:

□ INDICATES AREA OF MONUMENT REPLACEMENT DETAIL. SEE SHEETS 2 & 3.

— NEW SANITARY SEWER LINES

- - - APPROXIMATE SECTION LINES

SHEET INDEX:

SHEET 1: REFERENCE SHEET, NARRATIVE.

SHEET 2: DETAIL SHEET

SHEET 3: DETAIL SHEET

NARRATIVE:

THE PURPOSE OF THIS SURVEY IS TO PERPETUATE THE RECORD MONUMENTS DESTROYED DURING THE NORTH ALBANY SEWER PROJECT. THIS SURVEY DOES NOT VERIFY OR ESTABLISH ANY PROPERTY LINES.

IN MAY, JUNE, AND JULY, 1992 FOUND MONUMENTS WERE TIED BY A RANDOM FIELD TRAVERSE ALONG THE PROPOSED ROUTE OF THE NORTH ALBANY SEWER PROJECT. ADDITIONAL MONUMENTS WERE REFERENCED IN FIELD NOTES AT THE TIME OF CONSTRUCTION, JULY THROUGH NOVEMBER 1992.

ALL MONUMENTS DISTURBED OR DESTROYED WERE REPLACED BY COORDINATE VALUES FROM ORIGINAL TRAVERSE POINTS OR FROM FIELD NOTE TIES.

REGISTERED
PROFESSIONAL
LAND SURVEYOR

Jeffery S. Whitson

OREGON
2012 26 1000
JEFFERY S. WHITSON
2361

EXPIRATION DATE
DECEMBER 31, 1994

DRAWING NUMBER
8678

PLAN HOLD CORPORATION • IRVINE, CALIFORNIA
REORDER BY NUMBER 075AR
POSITION EDGE OF PRINT ON THIS LINE

DRAWING NUMBER
2/3

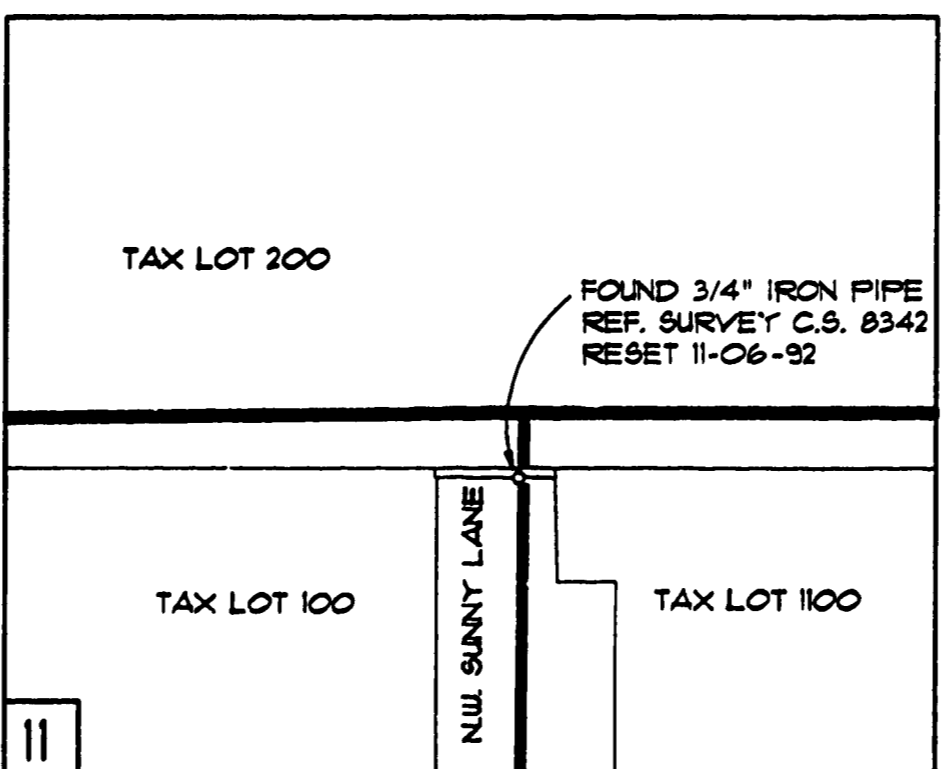
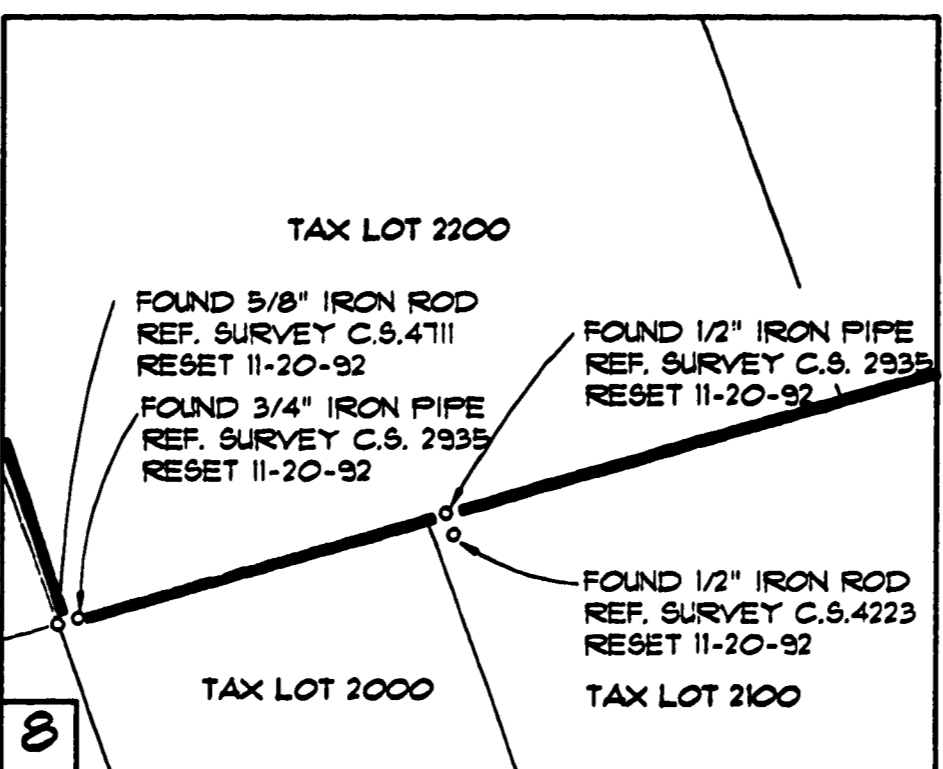
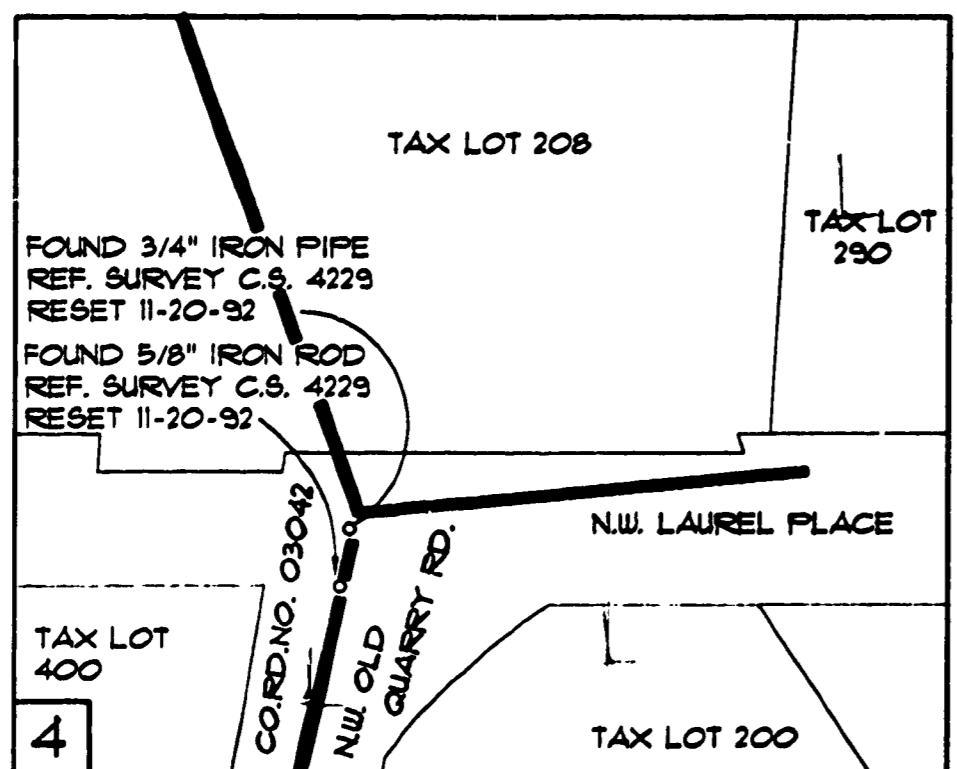
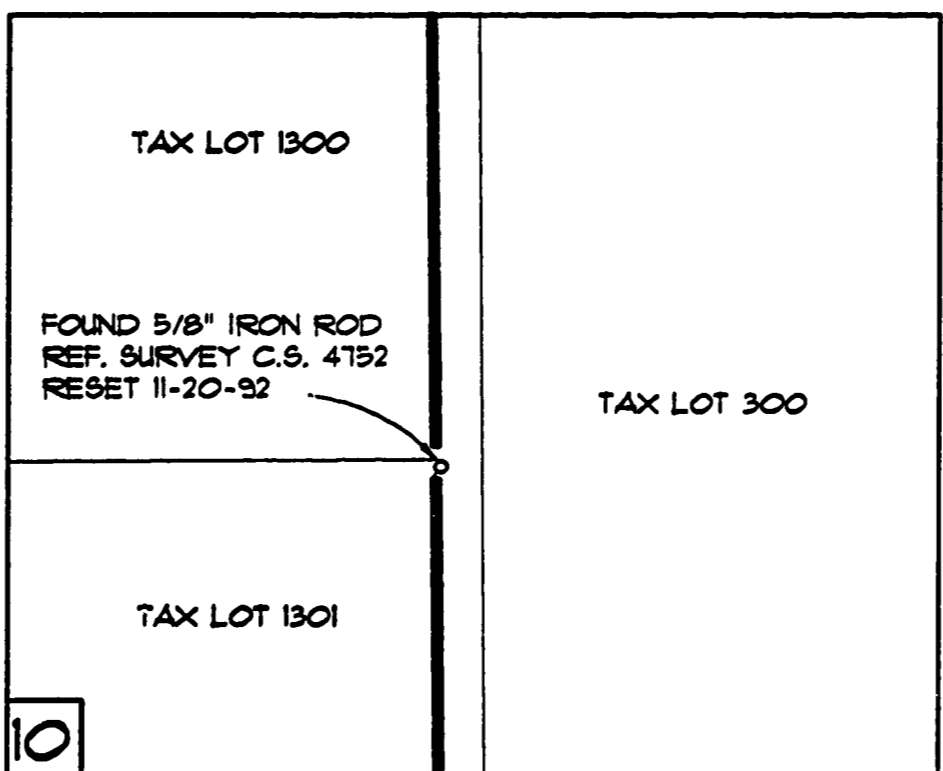
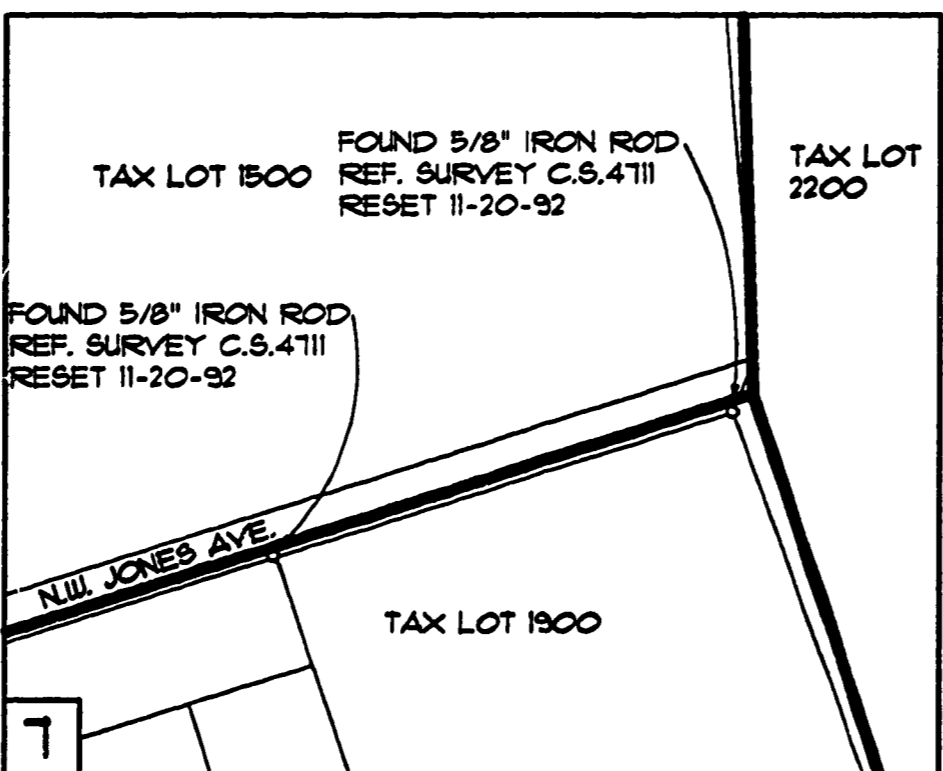
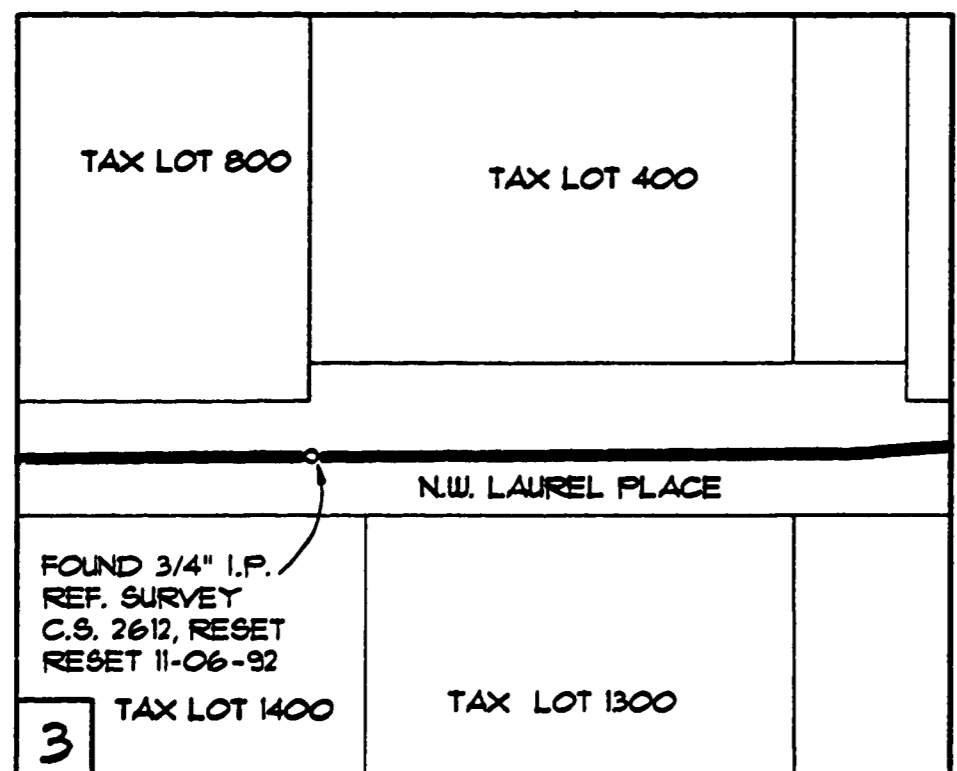
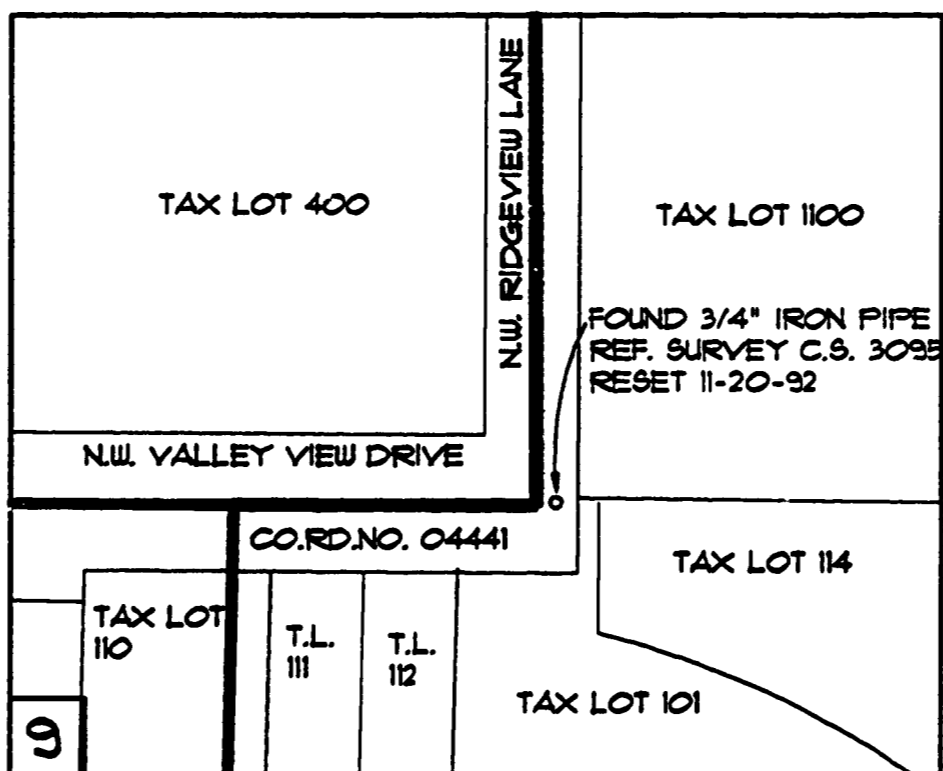
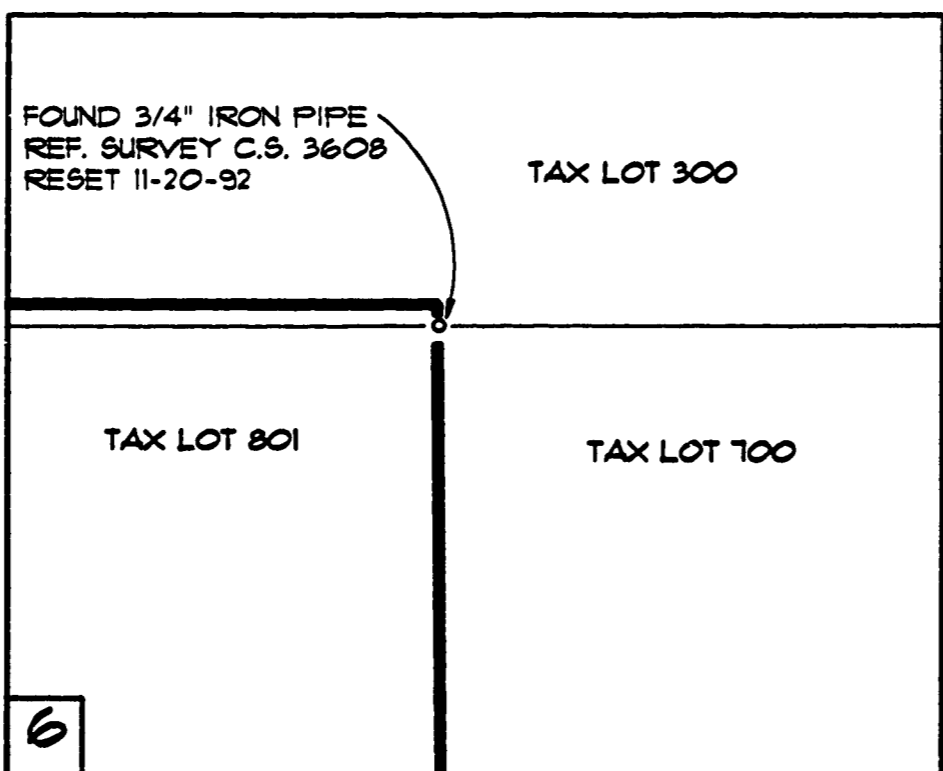
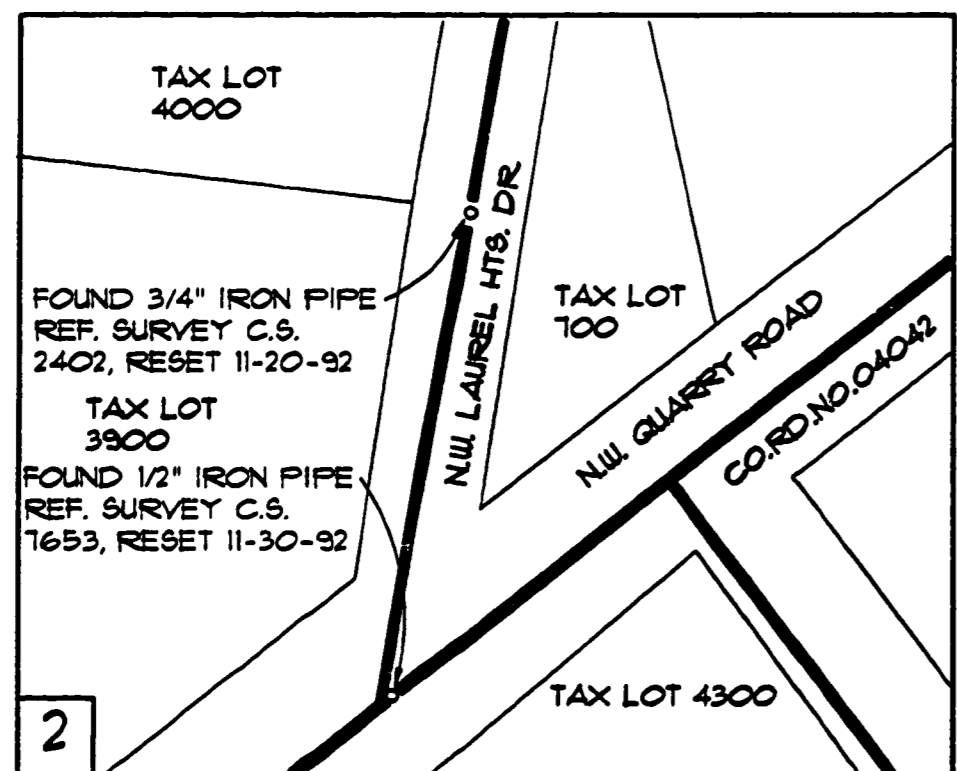
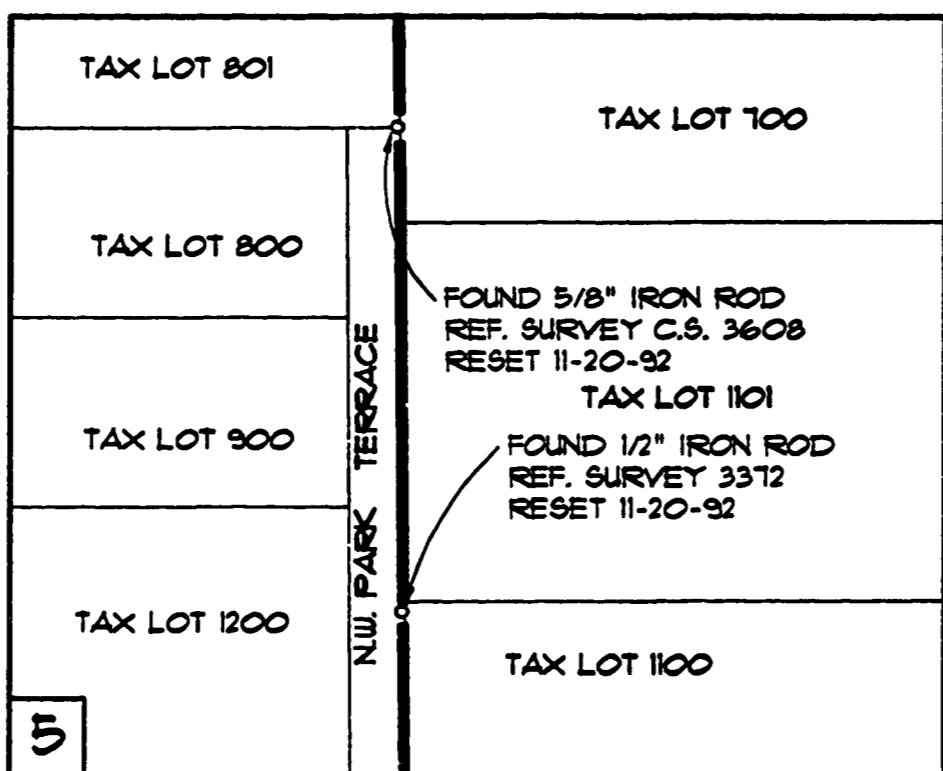
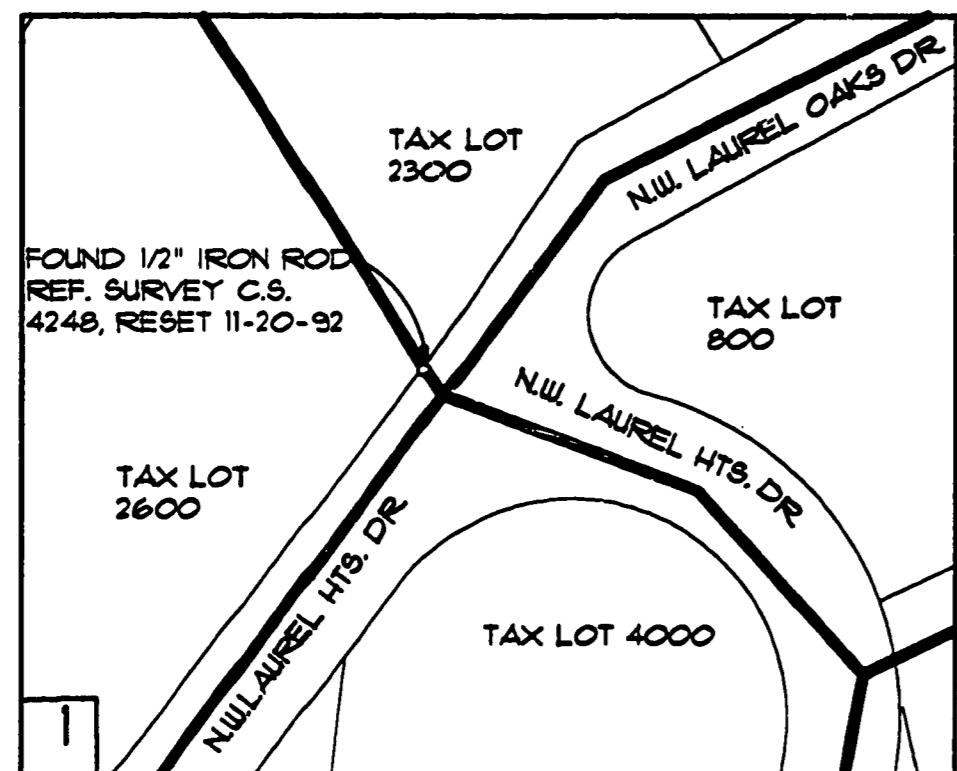
PLAN HOLD CORPORATION • IRVINE, CALIFORNIA
REORDER BY NUMBER 075AR
POSITION EDGE OF PRINT ON THIS LINE

DRAWING NUMBER
2/3

PLAN HOLD CORPORATION • IRVINE, CALIFORNIA
REORDER BY NUMBER 075AR
POSITION EDGE OF PRINT ON THIS LINE

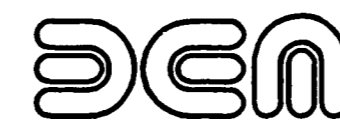
DRAWING NUMBER
8678

PLAN HOLD CORPORATION • IRVINE, CALIFORNIA
REORDER BY NUMBER 075AR
POSITION EDGE OF PRINT ON THIS LINE



REMONUMENTATION SURVEY FOR CITY OF ALBANY

SITUATED IN SECTIONS 25,35,36 OF TOWNSHIP 10 SOUTH,
RANGE 4 WEST AND SECTIONS 1 OF TOWNSHIP 11 SOUTH,
RANGE 4 WEST AND SECTION 31 OF TOWNSHIP 10 SOUTH,
RANGE 3 WEST OF THE WILLAMETTE MERIDIAN
CITY OF ALBANY, BENTON COUNTY, OREGON
SCALE: 1"=50' NOVEMBER 6, 1992



DAVID EVANS AND ASSOCIATES, INC.
7828 S.W. CORBETT AVENUE
PORTLAND, OREGON 97201
(503) 223-6663

Benton County
Surveyor's Office

C.S. FILE NO. 8678
FILING DATE 2-12-1993
FILE SIZE 18x24

REGISTERED
PROFESSIONAL
LAND SURVEYOR

Jeffery S. Whitson
OREGON
JEFFERY S. WHITSON
2381

EXPIRATION DATE
DECEMBER 31, 1994

LEGEND:

- SET 5/8" X 30" IRON ROD WITH YELLOW PLASTIC CAP STAMPED "DEA INC."
- NEW SANITARY SEWER LINE.

NOTES:

TAX LOT NUMBERS ARE SHOWN PER THE FOLLOWING BENTON COUNTY ASSESSORS MAPS.

DETAIL NUMBER	MAP NUMBER	REV. DATE
4,6	10-4-36	9-7-90
12,3,4	10-4-36DA	5-14-90
3	10-4-36AD	4-26-84
5,6	10-4-36AC	7-2-84
7,8	11-4-1AB	10-06-92
10,12	10-4-36BC	11-26-84
10,11	10-4-36AD	4-25-84
9	10-4-25CA	1-15-91
12	10-4-36BD	7-4-84
9	10-4-25BD	12-4-85
9	10-4-25	8-31-92
12	10-4-36CB	5-16-89
12	10-4-36CA	4-26-84

DRAWING NUMBER
8678
PLAN HOLD CORPORATION • IRVINE, CALIFORNIA
REORDER BY NUMBER 0754R
POSITION EDGE OF PRINT ON THIS LINE

DRAWING NUMBER
3/3
PLAN HOLD CORPORATION • IRVINE, CALIFORNIA
REORDER BY NUMBER 0754R
POSITION EDGE OF PRINT ON THIS LINE

DRAWING NUMBER
3/3
PLAN HOLD CORPORATION • IRVINE, CALIFORNIA
REORDER BY NUMBER 0754R
POSITION EDGE OF PRINT ON THIS LINE

DRAWING NUMBER
8678
PLAN HOLD CORPORATION • IRVINE, CALIFORNIA
REORDER BY NUMBER 0754R
POSITION EDGE OF PRINT ON THIS LINE

REMONUMENTATION SURVEY
FOR
CITY OF ALBANY

SITUATED IN SECTIONS 25,35,36 OF TOWNSHIP 10 SOUTH,
RANGE 4 WEST AND SECTIONS 1 OF TOWNSHIP 11 SOUTH,
RANGE 4 WEST AND SECTION 31 OF TOWNSHIP 10 SOUTH,
RANGE 3 WEST OF THE WILLAMETTE MERIDIAN
CITY OF ALBANY, BENTON COUNTY, OREGON

SCALE: 1"=50'

NOVEMBER 6, 1992



deca

DAVID EVANS AND ASSOCIATES, INC.
2828 S.W. CORBETT AVENUE
PORTLAND, OREGON 97201
(503) 223-6663

**Benton County
Surveyor's Office**

C.S. FILE NO. **8678**
FILING DATE **2-17-1993**
FILE SIZE **18x24**

REGISTERED
PROFESSIONAL
LAND SURVEYOR

Jeffery S. Whitson
JEFFERY S. WHITSON
2381

EXPIRATION DATE
DECEMBER 31, 1994

LEGEND:

- SET 5/8" X 30" IRON ROD WITH YELLOW PLASTIC CAP STAMPED "DEA INC." UNLESS OTHERWISE NOTED.
- NEW SANITARY SEWER LINE.

NOTES:

TAX LOT NUMBERS ARE SHOWN PER THE FOLLOWING BENTON COUNTY ASSESSORS MAPS.

DETAIL NUMBER	MAP NUMBER	REV. DATE
14	10-4-35DB	4-25-84
14	10-4-35AC	6-15-90
15	10-4-35AB	6-9-88
15	10-4-36DA	5-14-90
17,8	10-4-35BC	3-3-86
13	10-4-35AD	4-25-84
14,15	10-4-35	2-12-91
16,8	10-4-25CA	1-15-91
16,8	10-4-25BD	12-4-85
15	10-4-26	2-26-86
17,8	10-4-25	8-31-92
19	10-3-31CB	6-8-89

