

REGISTERED
PROFESSIONAL
LAND SURVEYOR

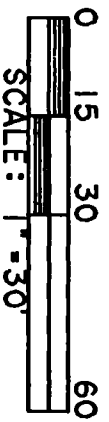
Theodore J. Langston

OREGON
JULY 13, 1979
THEODORE JAMES LANGSTON
1923

EXPIRES 12-31-93

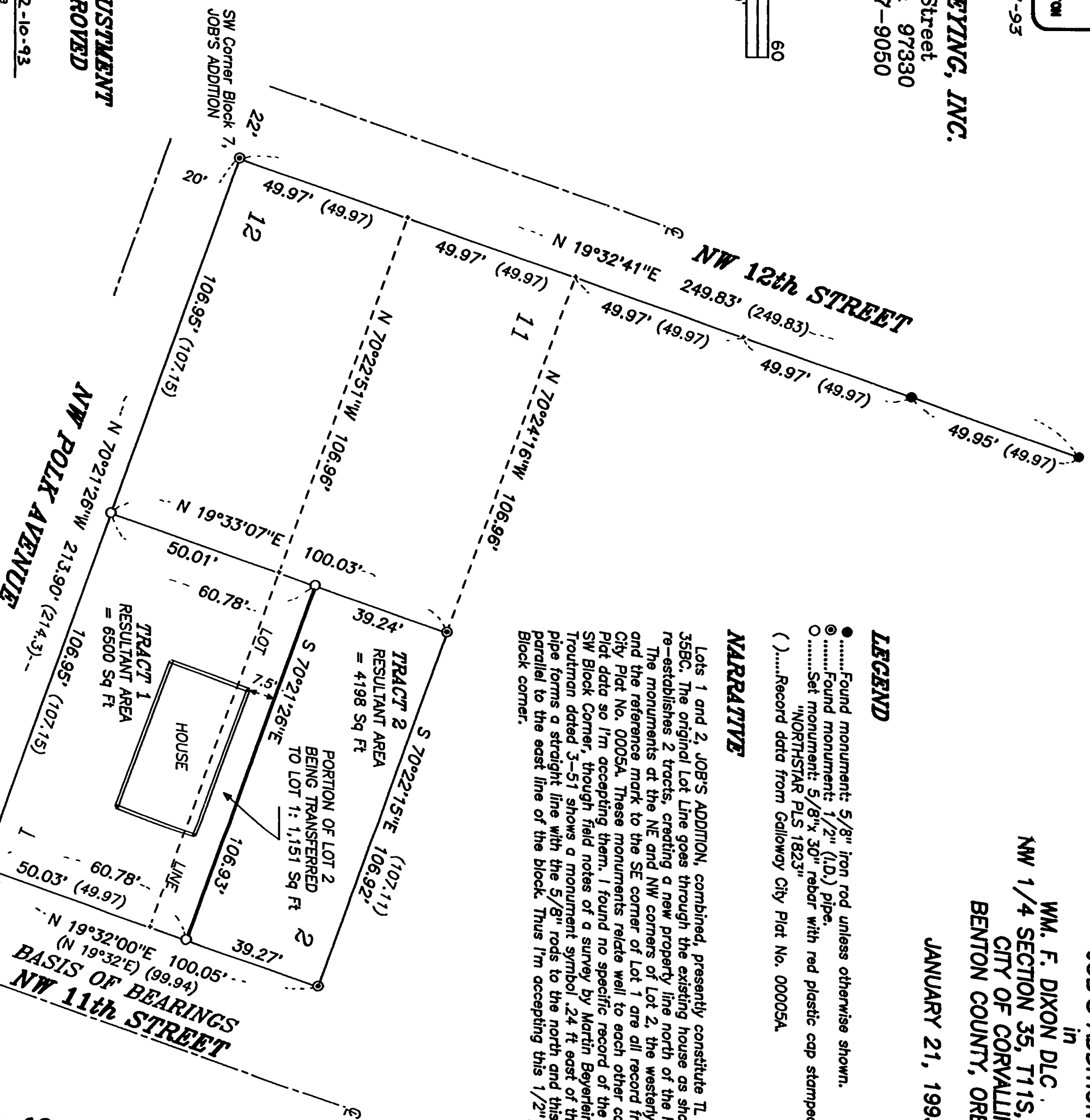
NORTHSTAR SURVEYING, INC.

402 N.W. 5th Street
Corvallis, Oregon 97330
Phone: 503-757-9050



PROPERTY LINE ADJUSTMENT
LLA93-0002 APPROVED

Jessie Maud date 2-10-93
Dev. Serv. Mng'r
Neil Munn date 2-10-93
City Engineer



PROPERTY LINE ADJUSTMENT SURVEY

for
STAN SEVRUK
on

LOTS 1 and 2, BLOCK 7,
JOB'S ADDITION

in
WM. F. DIXON DLC . 50
NW 1/4 SECTION 35, T11S, R5W, W.M.
CITY OF CORVALLIS
BENTON COUNTY, OREGON

JANUARY 21, 1993

LEGEND

- Found monument: 5/8" iron rod unless otherwise shown.
- ⊙ Found monument: 1/2" (I.D.) pipe.
- Set monument: 5/8"x 30" rebar with red plastic cap stamped "NORTHSTAR PLS 1823"
- () Record data from Galloway City Plat No. 00005A.

NARRATIVE

Lots 1 and 2, JOB'S ADDITION, combined, presently constitute TL 9200, Map 11-5-35BC. The original Lot Line goes through the existing house as shown. This survey re-establishes 2 tracts, creating a new property line north of the house. The monuments at the NE and NW corners of Lot 1 are all record from Galloway's City Plat No. 00005A. These monuments relate well to each other compared to the City Plat data so I'm accepting them. I found no specific record of the 1/2" pipe at the SW Block Corner, though field notes of a survey by Martin Beyerslein for Wm. Troutman dated 3-51 shows a monument symbol .24 ft east of the corner. The 1/2" pipe forms a straight line with the 5/8" rods to the north and this line is nearly parallel to the east line of the block. Thus I'm accepting this 1/2" pipe as the Block corner.

"X" in walk lies
.18" W'ly and
.09" S'ly of corner
per City Plat 00005A.

Benton County
Surveyor's Office

C.S. FILE NO. 8680
FILING DATE 2-22-1993
FILE SIZE 14x17