

FORM 1

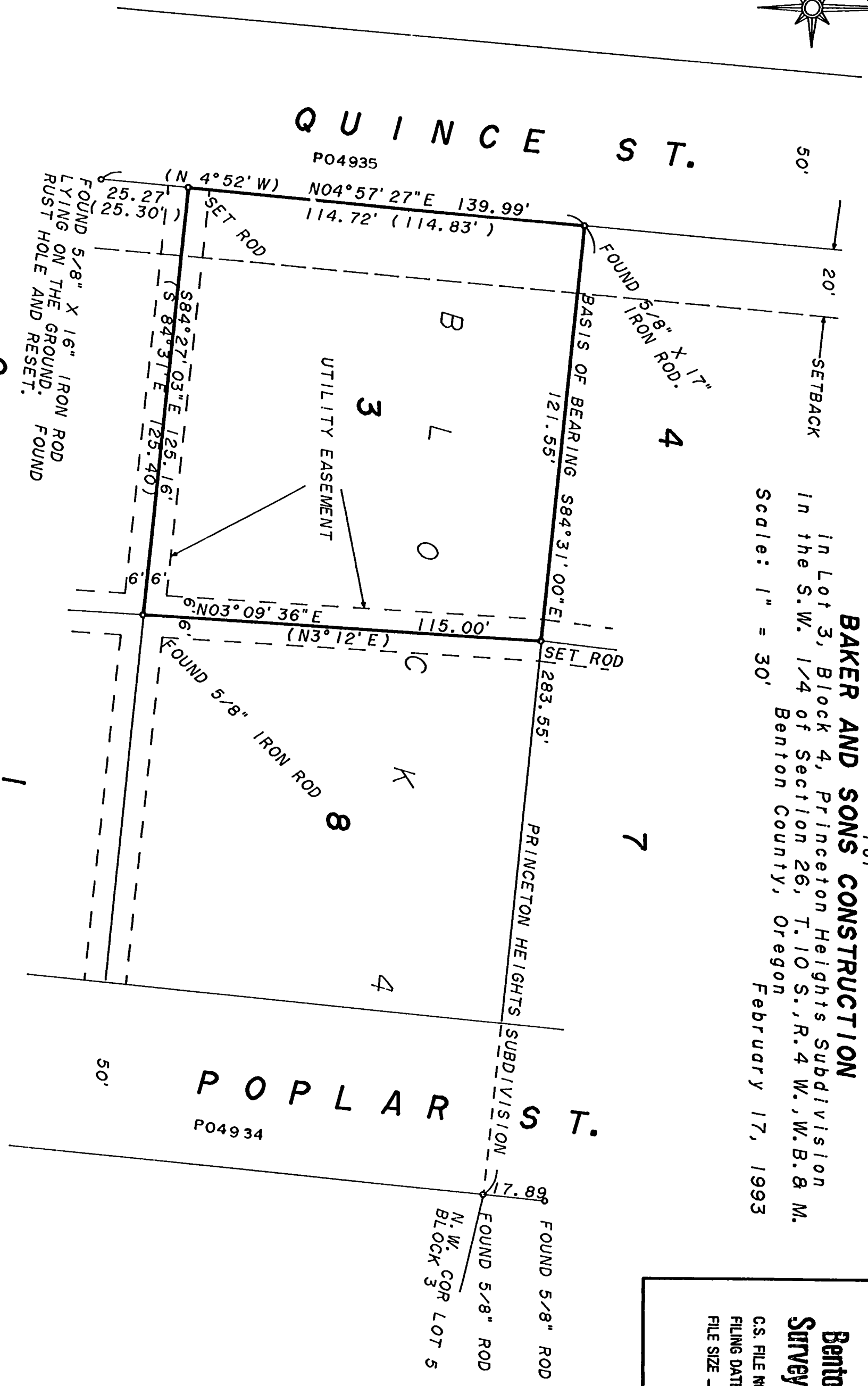
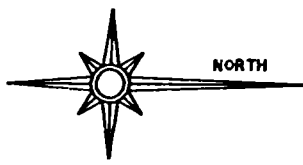
DRAWING NUMBER  
**8688**

DRAWING NUMBER  
**8688**

PLAN-HOLD CORPORATION • IRVINE, CALIFORNIA  
RECORDED BY NUMBER 07348

PLAN-HOLD CORPORATION • IRVINE, CALIFORNIA  
RECORDED BY NUMBER 07348

8688  
3-17-93



Record of Survey  
for  
**BAKER AND SONS CONSTRUCTION**  
in Lot 3, Block 4, Princeton Heights Subdivision  
in the S.W. 1/4 of Section 26, T.10 S., R.4 W., B.8 M.  
Benton County, Oregon  
February 17, 1993  
Scale: 1" = 30'

Benton County  
Surveyor's Office  
C.S. FILE NO. 8688  
FILING DATE 3-17-1993  
FILE SIZE 14X17

**NARRATIVE:** The purpose of this survey is to mark the boundaries of Lot 3, Block 4, Princeton Heights Subdivision. The southwest corner of Lot 3, Block 4 was reestablished by proportion between the monument found at the northwest corner of Lot 3 Block 4 and the monument found southerly of the southwest corner of Block 3, Lot 4. The distance between the northwest corner of Lot 3, Block 4 and the northwest corner of Lot 5, Block 3 checked well, and the distance between the northwest corner of Lot 5, Block 3 and the iron northerly of the northwest corner of Lot 5, Block 3 checked well also, so the northeast corner of Lot 3, Block 4 was reestablished using plat 3, Block 4 and the iron found at the northwest corner of Lot 5, Block 3.

NOTE: Monuments set are 5/8" x 30" rebar with yellow plastic cap marked 'LS 501'.

NOTE: Information in parenthesis is from PRINCETON HEIGHTS SUBDIVISION.

REGISTERED  
PROFESSIONAL  
LAND SURVEYOR  
*Charles D. Moore*  
VERMILION, OREGON  
EXPIRATION DATE: 12-31-94

**Moore Surveying**  
424 Second Ave., S.E.  
Albany, Oregon 97321  
LAYERS 1, 21-88 (503) 928-3878