

DRAWING NUMBER
8725
PLAN HOLD CORPORATION • IRVINE, CALIFORNIA
RECORDED BY NUMBER 075AR

DRAWING NUMBER
PLAN HOLD CORPORATION • IRVINE, CALIFORNIA
RECORDED BY NUMBER 075AR

DRAWING NUMBER
PLAN HOLD CORPORATION • IRVINE, CALIFORNIA
RECORDED BY NUMBER 075AR

DRAWING NUMBER
8725
PLAN HOLD CORPORATION • IRVINE, CALIFORNIA
RECORDED BY NUMBER 075AR

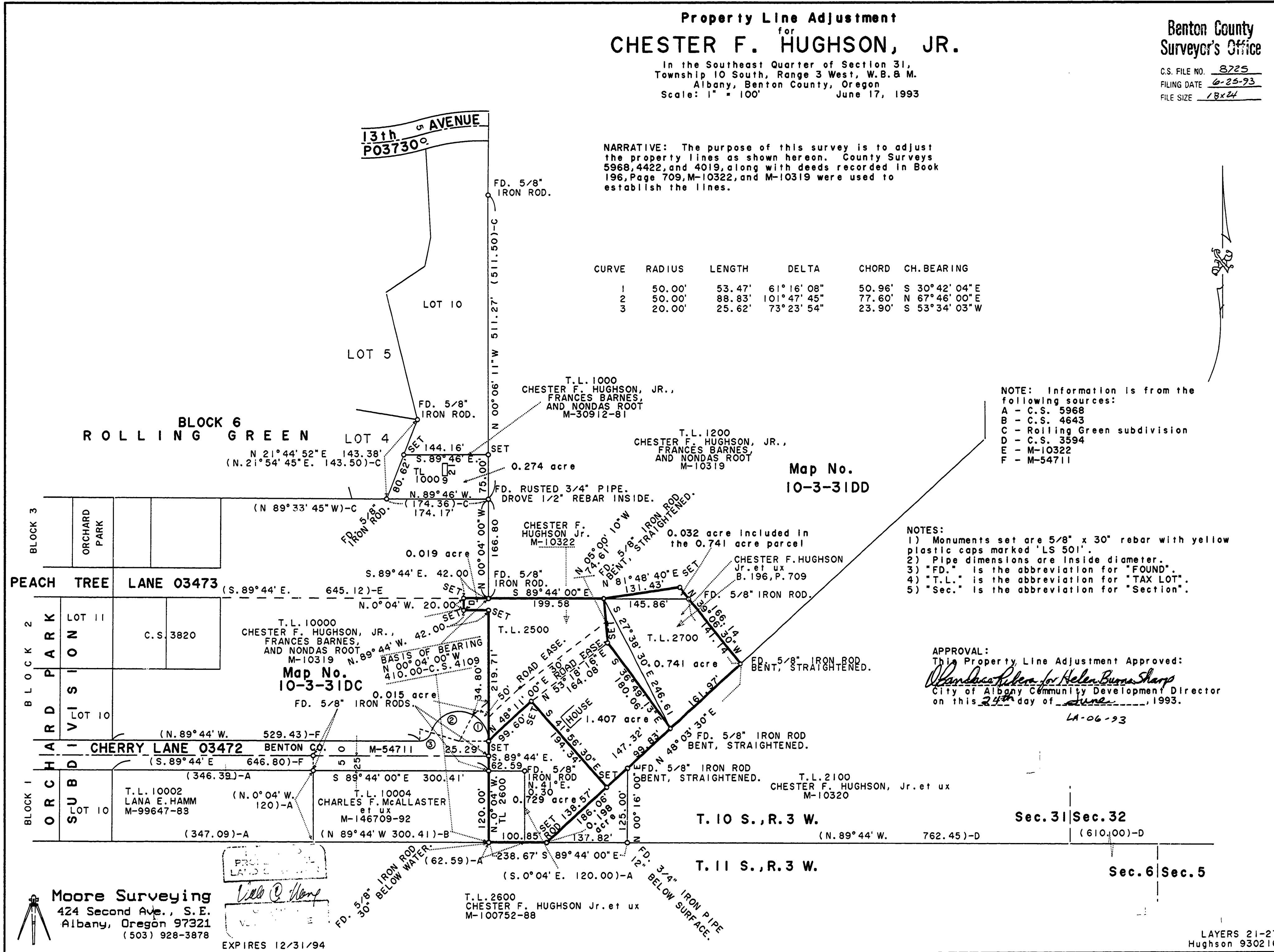
Property Line Adjustment
for
CHESTER F. HUGHSON, JR.
In the Southeast Quarter of Section 31,
Township 10 South, Range 3 West, W.B. & M.
Albany, Benton County, Oregon
Scale: 1" = 100'

Benton County
Surveyor's Office

C.S. FILE NO. 8725
FILING DATE 6-25-93
FILE SIZE 18x24

NARRATIVE: The purpose of this survey is to adjust the property lines as shown hereon. County Surveys 5968, 4422, and 4019, along with deeds recorded in Book 196, Page 709, M-10322, and M-10319 were used to establish the lines.

CURVE	RADIUS	LENGTH	DELTA	CHORD	CH. BEARING
1	50.00'	53.47'	61° 16' 08"	50.96'	S 30° 42' 04" E
2	50.00'	88.83'	101° 47' 45"	77.60'	N 67° 46' 00" E
3	20.00'	25.62'	73° 23' 54"	23.90'	S 53° 34' 03" W



NOTE: Information is from the following sources:
A - C.S. 5968
B - C.S. 4643
C - Rolling Green subdivision
D - C.S. 3594
E - M-10322
F - M-54711

NOTES:
1) Monuments set are 5/8" x 30" rebar with yellow plastic caps marked 'LS 501'.
2) Pipe dimensions are inside diameter.
3) "FD." is the abbreviation for "FOUND".
4) "T.L." is the abbreviation for "TAX LOT".
5) "Sec." is the abbreviation for "Section".

APPROVAL:
This Property Line Adjustment Approved:
Helen Burns Sharp
City of Albany Community Development Director
on this 24th day of June, 1993.
LA-06-93

Moore Surveying
424 Second Ave., S.E.
Albany, Oregon 97321
(503) 928-3878

EXPIRES 12/31/94

T.L. 2600
CHESTER F. HUGHSON Jr. et ux
M-100752-88

LAYERS 21-27
Hughson 930216