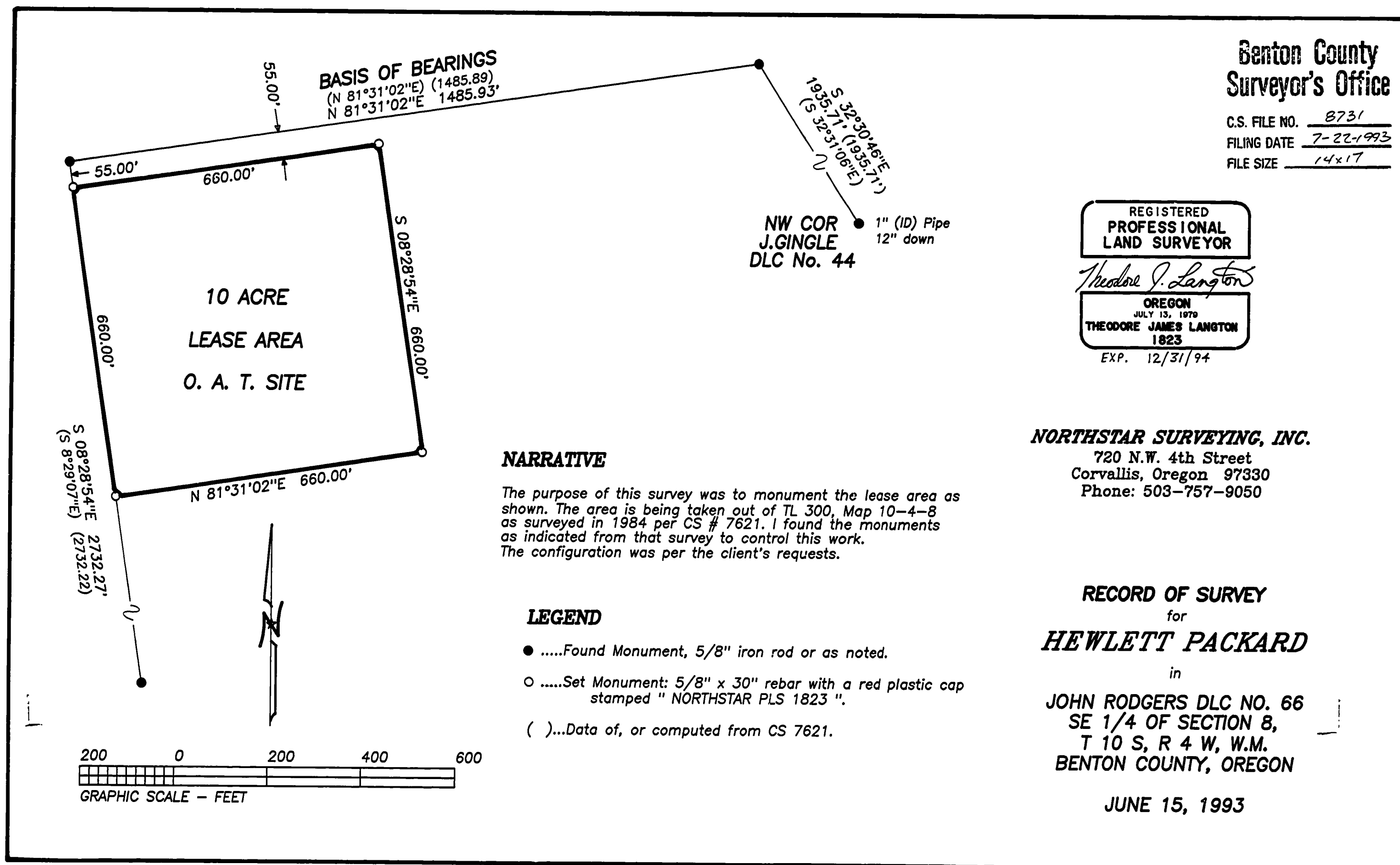


DRAWING NUMBER  
**8731**

PLAN HOLD CORPORATION • IRVINE, CALIFORNIA  
RECORDER BY NUMBER 075AR  
POSITION EDGE OF PRINT ON THIS LINE

DRAWING NUMBER  
**8731**

PLAN HOLD CORPORATION • IRVINE, CALIFORNIA  
RECORDER BY NUMBER 075AR  
POSITION EDGE OF PRINT ON THIS LINE



**Benton County  
Surveyor's Office**

C.S. FILE NO. 8731  
FILING DATE 7-22-1993  
FILE SIZE 14x17

REGISTERED  
PROFESSIONAL  
LAND SURVEYOR

*Theodore J. Langton*

OREGON  
JULY 13, 1979  
THEODORE JAMES LANGTON  
1823

EXP. 12/31/94

**NORTHSTAR SURVEYING, INC.**

720 N.W. 4th Street  
Corvallis, Oregon 97330  
Phone: 503-757-9050

**RECORD OF SURVEY**

for

**HEWLETT PACKARD**

in

JOHN RODGERS DLC NO. 66  
SE 1/4 OF SECTION 8,  
T 10 S, R 4 W, W.M.  
BENTON COUNTY, OREGON

JUNE 15, 1993