

PLANNING NUMBER
8740

W.A. HOLD CORPORATION • IRVINE, CALIFORNIA
REGISTERED BY NUMBER 07548

PLANNING NUMBER
8740

W.A. HOLD CORPORATION • IRVINE, CALIFORNIA
REGISTERED BY NUMBER 07548

3740
8-9-93

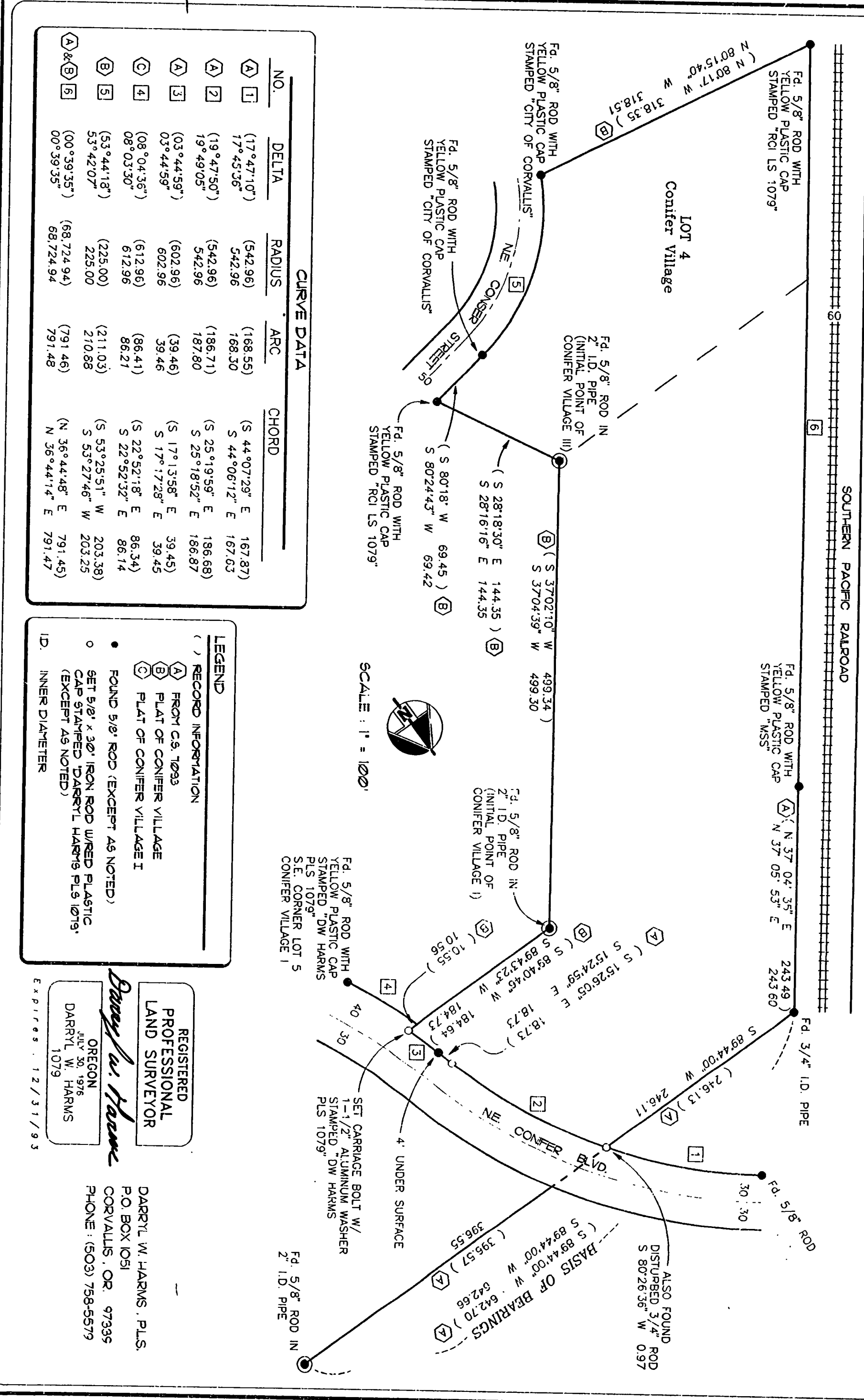
MAP OF SURVEY FOR:
K3, INC.
ARCHIMEDES STEWART D.L.C. No. 46
SE 1/4 SECTION 24, T. 11 S., R. 5 W., W.M.
BENTON COUNTY, OR.
JULY 12, 1993
SCALE: 1" = 100'

NARRATIVE

THE PURPOSE OF THIS SURVEY IS TO ESTABLISH THE BOUNDARY FOR THE SUBSEQUENT SUBDIVISION OF THIS PROPERTY, THE SUBDIVISION TO BE KNOWN AS "CONFIER VILLAGE V1".

THE MOST EASTERLY CORNER (CARRIAGE BOLT W/WASHER) 1 WAS CORNERED BY DISTANCE-DISTANCE (602.46-542.96) FROM THE MONUMENTS FOUND ON EACH SIDE OF THE CORNER. THE DISTANCE-DISTANCE (39.46) FOR CURVE 1 TO COMPUTE THE SOUTHERLY END OF CURVE 1. I HAD RECORD 1 TO CURVE 1 AND DISTANCE-DISTANCE (542.96-542.96) FROM THE FOUND ROD AT THE NORTHEAST CORNER WAS THEN SET AT THE POINT OF INTERSECTION OF THE BASIS OF BEARINGS LINE WITH THE ARC OF CURVES 1 & 2. ALL FOUND MONUMENTS WERE HELD IN POSITION.

Benton County
Surveyor's Office
O.S. FILE NO. **8740**
FILING DATE **8-9-1993**
FILE SIZE **14X17**



CURVE DATA

NO.	DELTA	RADIUS	ARC	CHORD
1	(17°47'10")	(542.96)	(168.55)	(S 44°07'29" E 167.87)
2	(17°45'36")	(542.96)	(168.50)	(S 44°06'12" E 167.63)
3	(19°49'50")	(542.96)	(186.71)	(S 25°19'59" E 186.68)
4	(19°49'05")	(542.96)	(187.80)	(S 25°18'52" E 186.87)
5	(03°44'59")	(602.96)	(39.46)	(S 17°13'58" E 39.45)
6	(03°44'59")	(602.96)	(39.46)	(S 17°17'28" E 39.45)
7	(08°04'36")	(612.96)	(86.41)	(S 22°52'18" E 86.34)
8	(08°03'30")	(612.96)	(86.21)	(S 22°52'32" E 86.14)
9	(53°44'18")	(225.00)	(211.03)	(S 53°25'51" W 203.38)
10	(53°42'07")	(225.00)	(210.88)	(S 53°27'46" W 203.25)
11	(00°39'35")	(681.724.94)	(791.46)	(N 36°44'48" E 791.45)
12	(00°39'35")	(681.724.94)	(791.48)	(N 36°44'14" E 791.47)

LEGEND

- () RECORD INFORMATION
- (A) FROM C.S. 1023
- (B) PLAT OF CONFIER VILLAGE
- (C) PLAT OF CONFIER VILLAGE I
- (D) FOUND 5/8" ROD (EXCEPT AS NOTED)
- (E) SET 5/8" x 30" IRON ROD W/RED PLASTIC CAP STAMPED "D.W. HARMIS PLS. 1079"
- (F) SET 3/4" I.D. PIPE (EXCEPT AS NOTED)
- (G) INNER DIAMETER

REGISTERED
PROFESSIONAL
LAND SURVEYOR

Darryl W. Harms

OREGON
DARRYL W. HARMIS
1079
Expires 12/31/93

DARRYL W. HARMIS, P.L.S.
P.O. BOX 1051
CORVALLIS, OR. 97335
PHONE: (503) 758-5579