

DRAWING NUMBER
8761

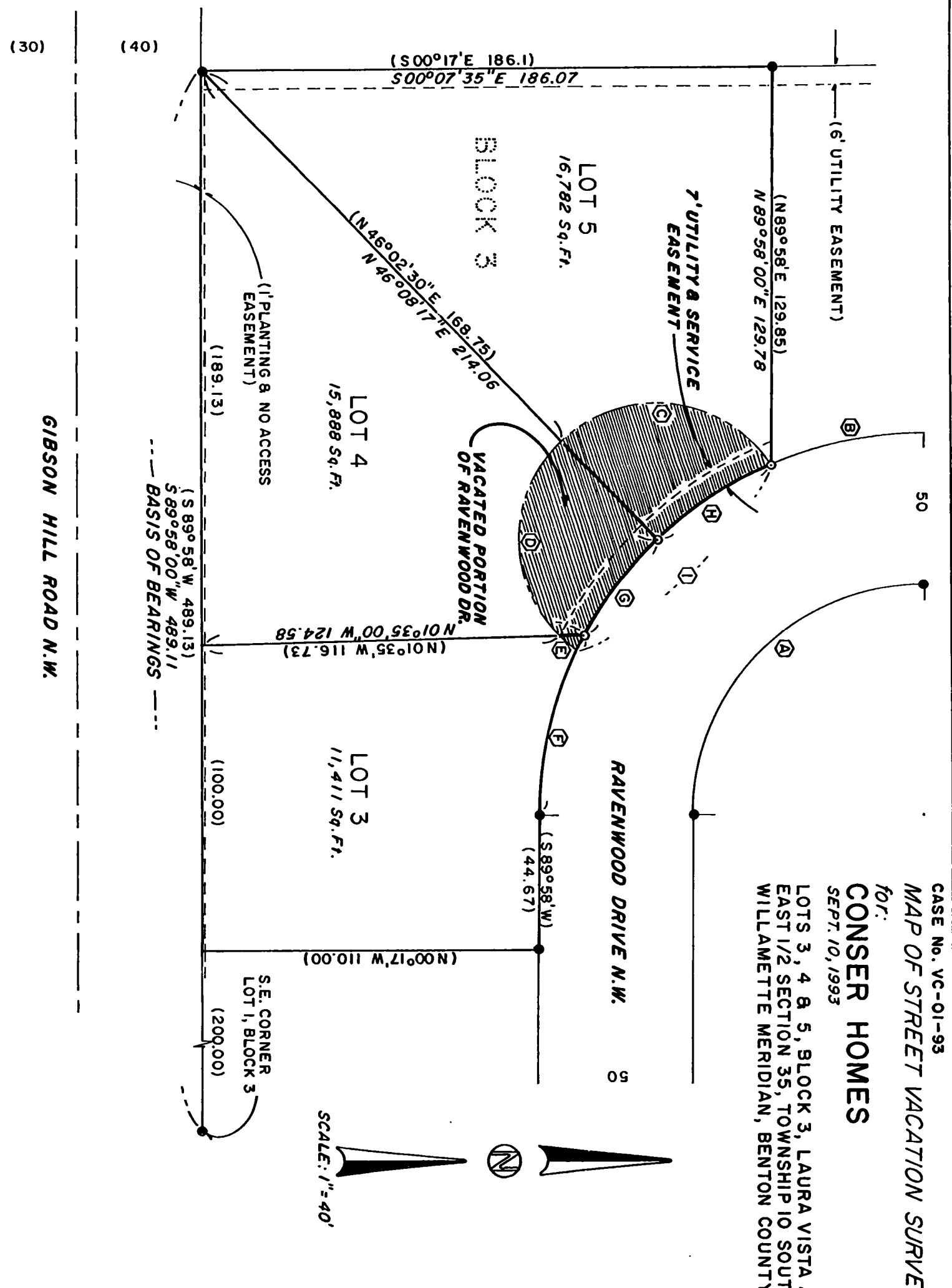
PLAN HOLD CORPORATION • IRVINE, CALIFORNIA
RECORD BY NUMBER 07348

DRAWING NUMBER
8761

PLAN HOLD CORPORATION • IRVINE, CALIFORNIA
RECORD BY NUMBER 07348

CASE No. VC-01-93
MAP OF STREET VACATION SURVEY
for:
CONSER HOMES
SEPT. 10, 1993
LOTS 3, 4 & 5, BLOCK 3, LAURA VISTA ACRES SUBDIVISION
EAST 1/2 SECTION 35, TOWNSHIP 10 SOUTH, RANGE 4 WEST,
WILLAMETTE MERIDIAN, BENTON COUNTY, OREGON.

Benton County
Surveyor's Office
C.S. FILE NO. 8761
FILING DATE 11-3-1993
FILE SIZE 11x17



	DELTA	RADIUS	ARC	CHORD
Ⓐ	(89°45'00")	(75.00)	(117.48)	(N45°09'30"W 105.83)
Ⓑ	(89°46'07")	(75.00)	(117.51)	(N45°01'27"W 105.85)
Ⓒ	(22°56'30")	(125.00)	(50.05)	(S11°45'15"E 49.55)
Ⓓ	(22°42'39")	(125.00)	(49.55)	(S11°39'43"E 49.22)
Ⓔ	(100°23'20")	(45.00)	(78.85)	(N06°13'1/2"E 69.14)
Ⓕ	(91°32'30")	(45.00)	(71.30)	(S89°42'00"E 64.49)

	DELTA	RADIUS	ARC	CHORD
Ⓖ	(08°46'06")	(45.00)	(6.89)	(S40°07'1/2"W 6.88)
Ⓗ	(27°57'36")	(125.00)	(61.00)	(S76°18'31"E 60.40)
Ⓘ	(18°05'02")	(125.00)	(39.45)	(S52°55'25"E 39.29)
Ⓚ	(20°53'16")	(125.00)	(45.57)	(S33°26'16"E 45.32)
Ⓛ	(200°41'56")	(45.00)	(157.64)	(S43°54'35"E 88.54)

- LEGEND**
- 1/2" I.D. IRON PIPE FOUND
 - SET 5/8"x30" IRON ROD WITH RED PLASTIC CAP
 - STAMPED "DARRYL W. HARMS, P.L.S. 1079"
 - () RECORD DATA FROM PLAT OF LAURA VISTA ACRES

NARRATIVE

THIS MAP REPRESENTS THE SURVEY REQUIRED TO SATISFY ALBANY COMMUNITY DEVELOPMENT CASE No. VC-01-93. TO CALCULATE THE RADIUS POINT FOR CURVES Ⓐ, Ⓑ, Ⓒ, Ⓓ, Ⓔ, Ⓕ, Ⓖ, Ⓗ, Ⓘ, Ⓚ, AND Ⓛ A DISTANCE - DISTANCE CALCULATION FROM THE END POINTS OF A CURVE TO THE HELD RECORD BEARING FOR THE WEST LINE OF LOT 3 AND NORTH LINE OF LOT 5 AND BEARING-DISTANCE CALCULATION FOR THE RAVENWOOD DRIVE END OF THOSE LINES. THE LINE BETWEEN LOTS 4 & 5 IS RADIAL AS PER THE PLAT.

DARRYL W. HARMS, P.L.S.
P.O. BOX 1051, OR 97339
CORVALLIS, OR
PHONE: (503) 758-5579

REGISTERED
PROFESSIONAL
LAND SURVEYOR
Darryl W. Harms
OREGON
JULY 20, 1978
DARRYL W. HARMS
1079
RENEWAL DATE: 12/31/93