

SI/16 11 | 12 FOUND: MON. 1' BELOW SURFACE OF OLD ROAD T12S R7W 1972 12" NOW 16" D-FIR N37E 26.4' HEALED BLAZE

11/12/13/14 FOUND: MON. FIRMLY SET 2" ABOVE GROUND T12S R7W ORIG. 40" NOW 40+" ROTTED, BURNT D-FIR SNAG S60E 169.9'

API FOUND: 3/4" IRON PIPE INSIDE A 2" IRON PIPE 1931 32" NOW 44" MAPLE S64W 17.3' HEALED BLAZE

AP2 FOUND: 3/4" IRON PIPE INSIDE A 2" IRON PIPE UNRECORDED 1972 NOW 14" MAPLE N83E 12.9' HEALED BLAZE

AP3 FOUND: 3/4" IRON PIPE INSIDE A 2" IRON PIPE UNRECORDED NOW DOWN 20" HEMLOCK STOOD N31W 19.7' HEALED BLAZE

AP4 FOUND: 3/4" IRON PIPE INSIDE A 2" IRON PIPE UNRECORDED 1972 NOW DOWN 22" DOUBLE MAPLE STOOD N50W 22.7' HEALED BLAZE

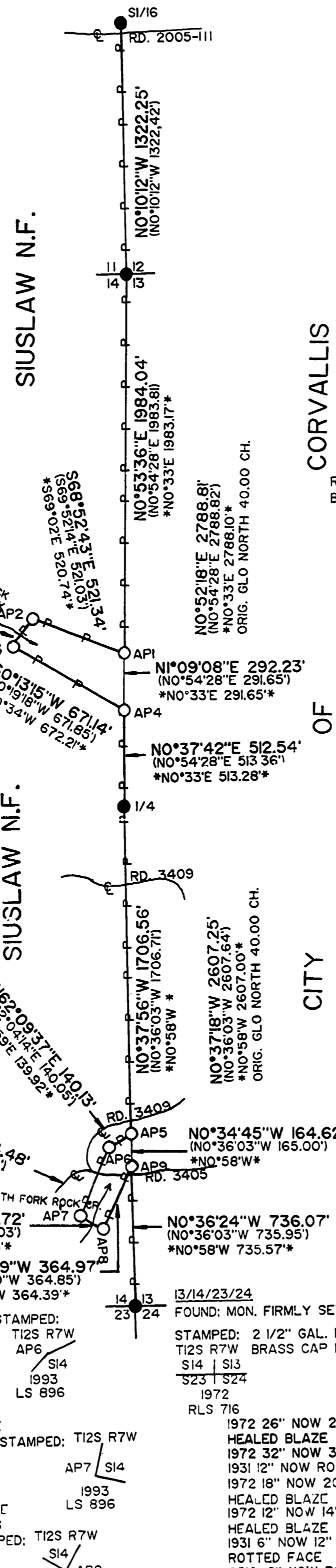
1/4 14 113 FOUND: MON. FIRMLY SET 2" ABOVE GROUND STAMPED: T12S R7W 1/4 ORIG. 16" NOW 36" D-FIR N44 1/2E 16.2' (RECORD N10E 241ks) HEALED BLAZE

AP5 FOUND: 2" IRON PIPE 6" UNDER SURFACE OF ROAD POSSIBLE REMAINS OF '931 BT S29W 12' UNRECORDED 1972 NOW 24" MAPLE S31 1/2W 43.3' PROBABLE HEALED BLAZE

AP6 FOUND: 2" IRON PIPE UNRECORDED 1972 NOW 36" MAPLE S40 1/2E 15.0' HEALED BLAZE

AP7 FOUND: 2" IRON PIPE UNRECORDED 1972 NOW 20" CEDAR N35E 27.0' HEALED BLAZE

AP8 FOUND: 3/4" IRON PIPE INSIDE A 2" IRON PIPE 1931 12" NOW 16" MAPLE S32W 5.0' (RECORD S26W) HEALED BLAZE



BEARING BASIS DATE PROCEDURE PURPOSE BEARING TREES MARKED FIELD NOTES

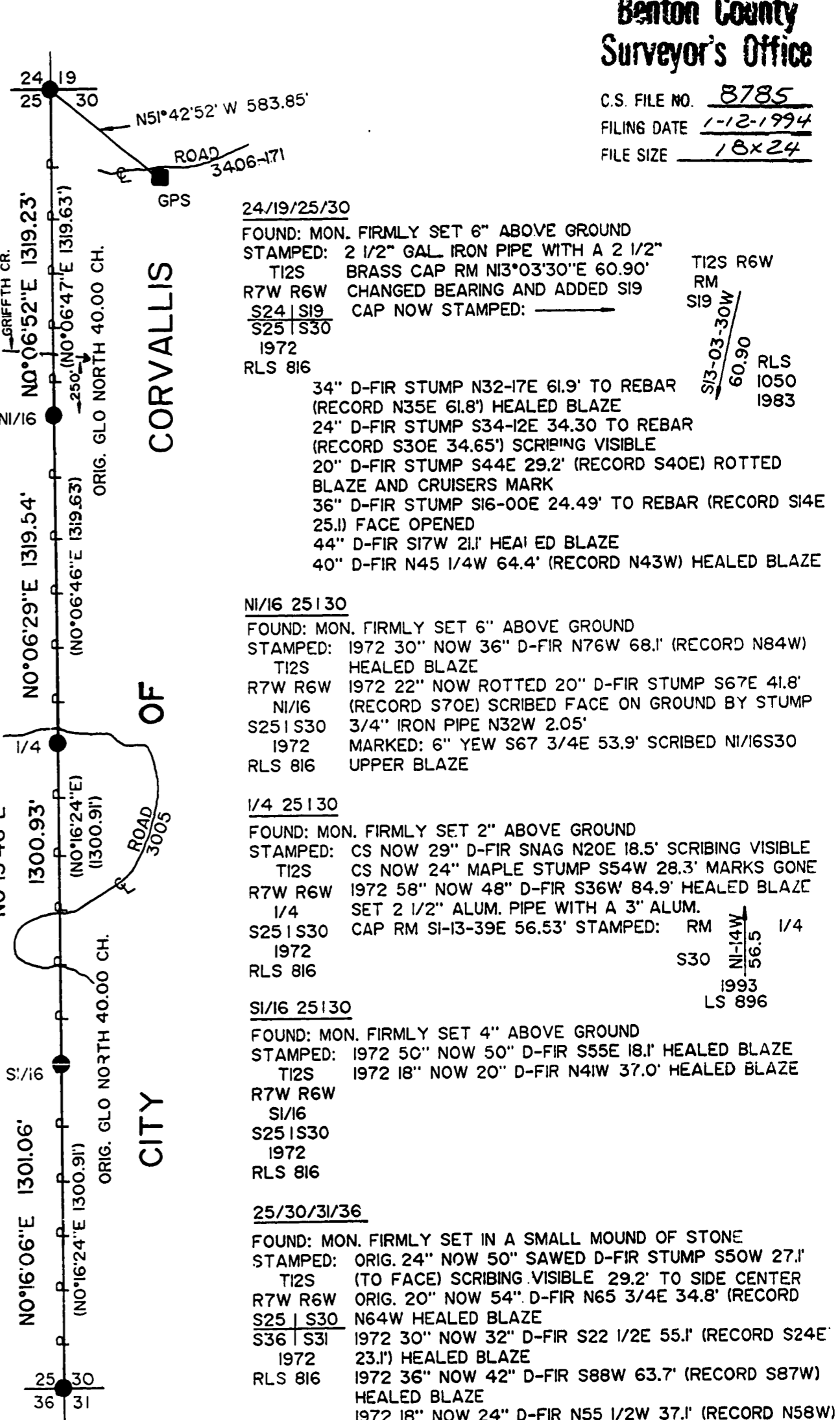
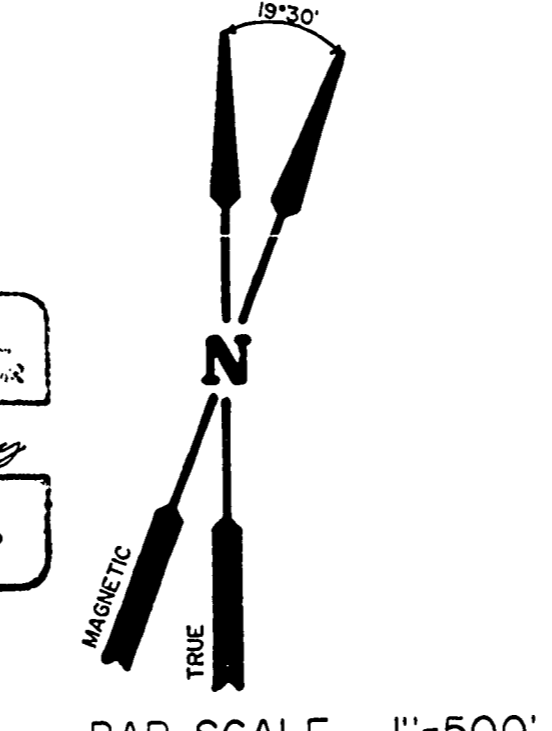
NARRATIVE/LEGEND

A SOLAR OBSERVATION (HOUR ANGLE) NEAR 1/4 25 130 AND AT AP 1. NOV. 26, 1993. A THEODOLITE/EDM TRAVERSE WAS RAN BETWEEN THE EXISTING CORNERS ORIENTED TO THE SOLAR BEARINGS.

HISTORY OF SURVEYS

THE LINE 25130 WAS ORIGINALLY SURVEYED BY DEPUTY H. GORDON IN 1854. THE LINE 14113 WAS ORIGINALLY SURVEYED BY DEPUTY E. HENDERSON IN 1875.

REGISTERED PROFESSIONAL LAND SURVEYOR LARRY D. BISHOP 896 EXPIRES 12/31/95



Benton County Surveyor's Office

C.S. FILE NO. 8785 FILING DATE 1-12-1994 FILE SIZE 18x24

24/19/25/30 FOUND: MON. FIRMLY SET 6" ABOVE GROUND STAMPED: 2 1/2" GAL. IRON PIPE WITH A 2 1/2" T12S BRASS CAP RM N13°03'30"E 60.90'

NI/16 25130 FOUND: MON. FIRMLY SET 6" ABOVE GROUND STAMPED: 1972 30" NOW 36" D-FIR N76W 68.1' (RECORD N84W) T12S HEALED BLAZE

1/4 25130 FOUND: MON. FIRMLY SET 2" ABOVE GROUND STAMPED: CS NOW 29" D-FIR SNAG N20E 18.5' SCRIBING VISIBLE

SI/16 25130 FOUND: MON. FIRMLY SET 4" ABOVE GROUND STAMPED: 1972 50" NOW 50" D-FIR S55E 18.1' HEALED BLAZE

25/30/31/36 FOUND: MON. FIRMLY SET IN A SMALL MOUND OF STONE STAMPED: ORIG. 24" NOW 50" SAWED D-FIR STUMP S50W 27.1'

GPS STATION FOUND: 3 1/4" ALUM. CAP FLUSH WITH GROUND S51°42'52"E 583.85' FROM NE CORNER

CERTIFICATION

I, LARRY D. BISHOP, A REGISTERED LAND SURVEYOR IN THE STATE OF OREGON HEREBY CERTIFY THAT THIS PLAT AND THE NOTES HEREON ARE A CORRECT REPRESENTATION OF A SURVEY

EXAMINED AND ACCEPTED FOR THE U. S. FOREST SERVICE THIS 11th DAY OF January 1993

PLAT OF SURVEY HEBO ALSEA MAINTENANCE CADASTRAL U.S.D.A. FOREST SERVICE - REGION 6 SIUSLAW NATIONAL FOREST

BISHOP SURVEYING, INC. 87830 TERRACE VIEW DRIVE FLORENCE, OR. 97439 (503) 997-1308 PROJECT NO. 93010