

8822

8822

3372
4-23-94

Benton County
Survey
CS FILE NO. 8822
FILING DATE 4-23-1994
FILE SIZE 13x24

- LEGEND**
- Found monument as noted
 - Set 2-1/2"x30" aluminum monument.
 - (A) Record information, CS 7346
 - (B) Record information, Book 94, page 28
 - (C) Record information, CS 8381
 - (D) Record information, CS 5437
 - (E) Record information, Hardcopy 11-5-00009
 - IR/YPC iron rod with yellow plastic cap
 - GLO Government Land Office
 - Pipe measures are inside diameter
 - Boundary line posted this contract.
 - 1 Corner reference

NARRATIVE

The purpose of this survey is to mark the boundaries of the Oregon State University Research Forest in Section 16 and a portion of the boundary in Section 15.

The original GLO survey was performed by George W. Hyde under Contract No. 19, dated May 27, 1852.

Basis of Bearings is the east line of Section 16 between the northeast and southeast corners, shown as N 0°04'09" East in CS 8381.

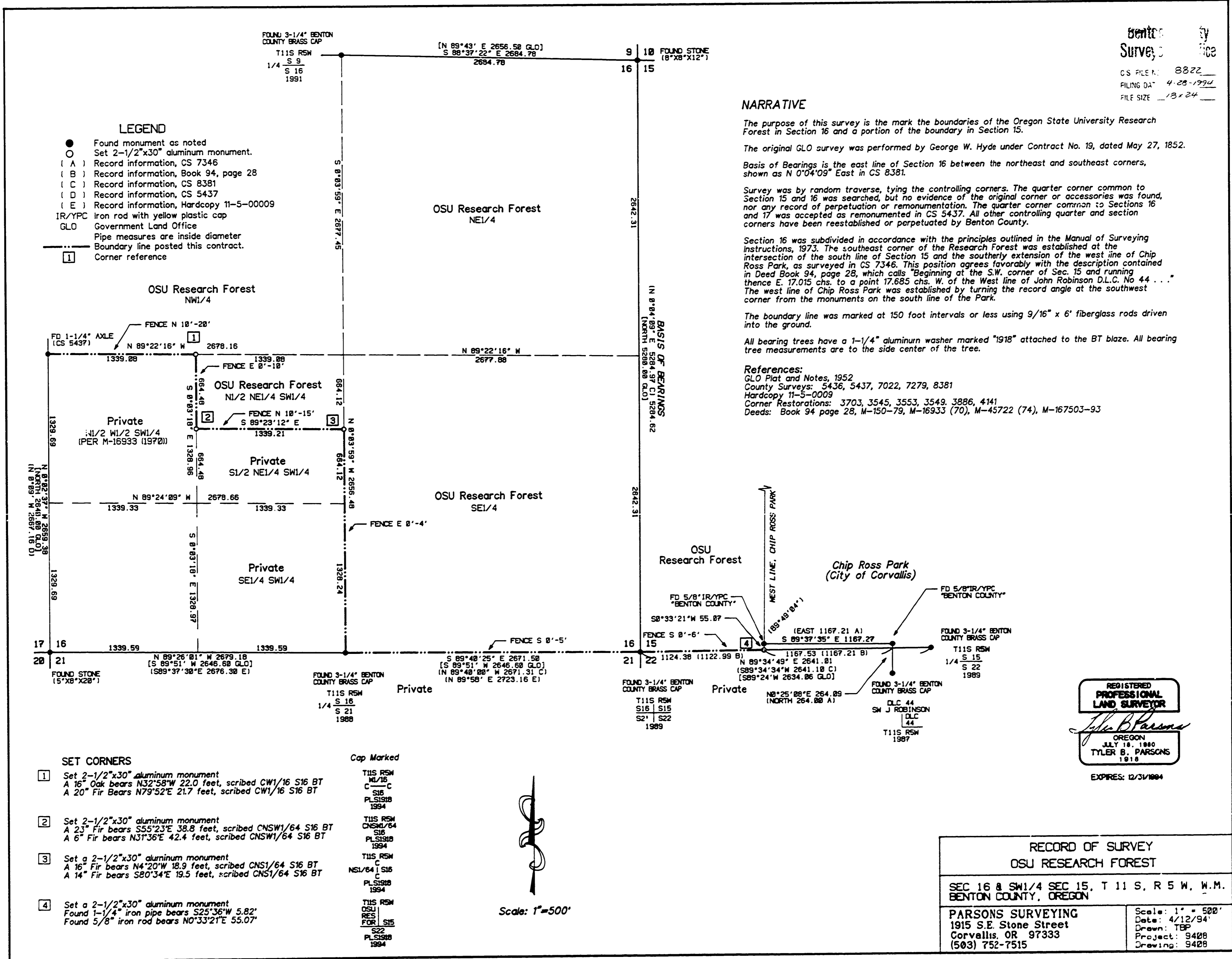
Survey was by random traverse, tying the controlling corners. The quarter corner common to Section 15 and 16 was searched, but no evidence of the original corner or accessories was found, nor any record of perpetuation or remonumentation. The quarter corner common to Sections 16 and 17 was accepted as remonumented in CS 5437. All other controlling quarter and section corners have been reestablished or perpetuated by Benton County.

Section 16 was subdivided in accordance with the principles outlined in the Manual of Surveying Instructions, 1973. The southeast corner of the Research Forest was established at the intersection of the south line of Section 15 and the southerly extension of the west line of Chip Ross Park, as surveyed in CS 7346. This position agrees favorably with the description contained in Deed Book 94, page 28, which calls "Beginning at the S.W. corner of Sec. 15 and running thence E. 17.015 chs. to a point 17.685 chs. W. of the West line of John Robinson D.L.C. No 44 . . ." The west line of Chip Ross Park was established by turning the record angle at the southwest corner from the monuments on the south line of the Park.

The boundary line was marked at 150 foot intervals or less using 9/16" x 6' fiberglass rods driven into the ground.

All bearing trees have a 1-1/4" aluminum washer marked "1918" attached to the BT blaze. All bearing tree measurements are to the side center of the tree.

References:
 GLO Plat and Notes, 1952
 County Surveys: 5436, 5437, 7022, 7279, 8381
 Hardcopy 11-5-0009
 Corner Restorations: 3703, 3545, 3553, 3549, 3886, 4141
 Deeds: Book 94 page 28, M-150-79, M-16933 (70), M-45722 (74), M-167503-93



- SET CORNERS**
- 1 Set 2-1/2"x30" aluminum monument
A 16" Oak bears N32°58'W 22.0 feet, scribed CW1/16 S16 BT
A 20" Fir bears N79°52'E 21.7 feet, scribed CW1/16 S16 BT
 - 2 Set 2-1/2"x30" aluminum monument
A 23" Fir bears S55°23'E 38.8 feet, scribed CNSW1/64 S16 BT
A 6" Fir bears N31°36'E 42.4 feet, scribed CNSW1/64 S16 BT
 - 3 Set a 2-1/2"x30" aluminum monument
A 16" Fir bears N4°20'W 18.9 feet, scribed CNS1/64 S16 BT
A 14" Fir bears S80°34'E 19.5 feet, scribed CNS1/64 S16 BT
 - 4 Set a 2-1/2"x30" aluminum monument
Found 1-1/4" iron pipe bears S25°36'W 5.82'
Found 5/8" iron rod bears N0°33'21"E 55.07'

- Cap Marked**
- T11S R5W
N1/16
C
S16
PLS1918
1994
 - T11S R5W
CNSW1/64
S16
PLS1918
1994
 - T11S R5W
C
NS1/64 S16
C
PLS1918
1994
 - T11S R5W
OSU
RES
FOR
S15
S22
PLS1918
1994

Scale: 1"=500'

REGISTERED
PROFESSIONAL
LAND SURVEYOR
Tyler B. Parsons
OREGON
JULY 18, 1980
TYLER B. PARSONS
1918
EXPIRES: 12/31/1994

RECORD OF SURVEY
OSU RESEARCH FOREST

SEC 16 & SW1/4 SEC 15, T 11 S, R 5 W, W.M.
BENTON COUNTY, OREGON

PARSONS SURVEYING
1915 S.E. Stone Street
Corvallis, OR 97333
(503) 752-7515

Scale: 1" = 500'
Date: 4/12/94
Drawn: TBP
Project: 9408
Drawing: 9408