

DRAWING NUMBER
8837

CLAN HOLD CORPORATION • IRVINE, CALIFORNIA
CORVALLIS, OREGON

DRAWING NUMBER
8837

CLAN HOLD CORPORATION • IRVINE, CALIFORNIA
CORVALLIS, OREGON

Benton County
Surveyor's Office

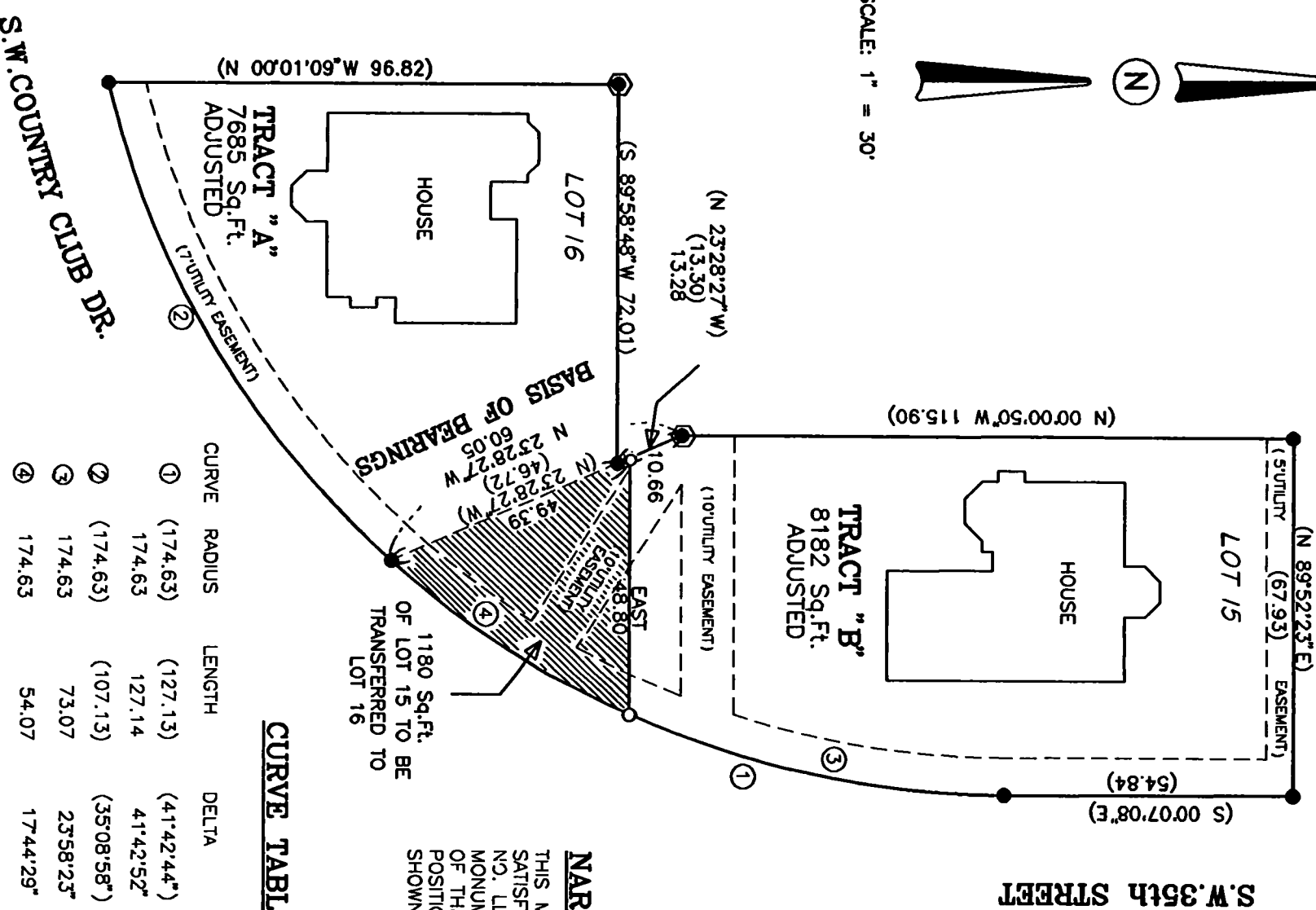
O.S. FILE NO. 8837
FILING DATE 6-9-1994
FILE SIZE 11x17

PROPERTY LINE ADJUSTMENT SURVEY
for
PACIFIC CONSTRUCTION
MAY 23, 1994

LOTS 15 & 16, "CLUB 35"
S.W.1/4 SEC.3, T.12 S., R.5 W., W.M.
BENTON COUNTY, OREGON



SCALE: 1" = 30'



- LEGEND**
- FD 5/8" IRON ROD WITH RED PLASTIC CAP STAMPED "K & D ENG. L.S. 1630"
 - SET 5/8" X 30" IRON ROD WITH RED PLASTIC CAP STAMPED "DARRYL HARMS, PLS 1079"
 - () RECORD DATA FROM PLAT OF "CLUB 35"
 - FD. 5/8" IRON ROD

NARRATIVE

THIS MAP REPRESENTS THE SURVEY REQUIRED TO SATISFY CORVALLIS DEVELOPMENT SERVICES FILE NO. LLA-94-0004. MONUMENTS FOUND ON EACH SIDE OF THE END POINTS OF THE ADJUSTED PROPERTY LINE WERE HELD IN POSITION FOR CONTROL AND NEW MONUMENTS SET AS SHOWN.

CURVE TABLE

CURVE	RADIUS	LENGTH	DELTA	CHORD	CH. BEARING
①	(174.63)	(127.13)	(41°42'44")	(124.34)	(S 20°46'31"W)
②	174.63	127.14	41°42'52"	124.35	S 20°44'53"W
③	(174.63)	(107.13)	(35°08'58")	(105.46)	(S 59°12'22"W)
④	174.63	73.07	25°58'23"	72.53	S 11°52'39"W
⑤	174.63	54.07	17°44'29"	53.86	S 32°44'05"W

REGISTERED
PROFESSIONAL
LAND SURVEYOR

Darryl W. Harms

OREGON
JULY 30, 1978
DARRYL W. HARMS
1079
RENEWAL DATE: 6/30/83

DARRYL W. HARMS, P.L.S.
P.O. BOX 1051
CORVALLIS, OR. 97339
PHONE: (503) 758-5579

APPROVALS

Darryl W. Harms
CORVALLIS CITY ENGINEER

Alan Plan
DEVELOPMENT SERVICES MANAGER

DATE 6-7-94

DATE 6-6-94