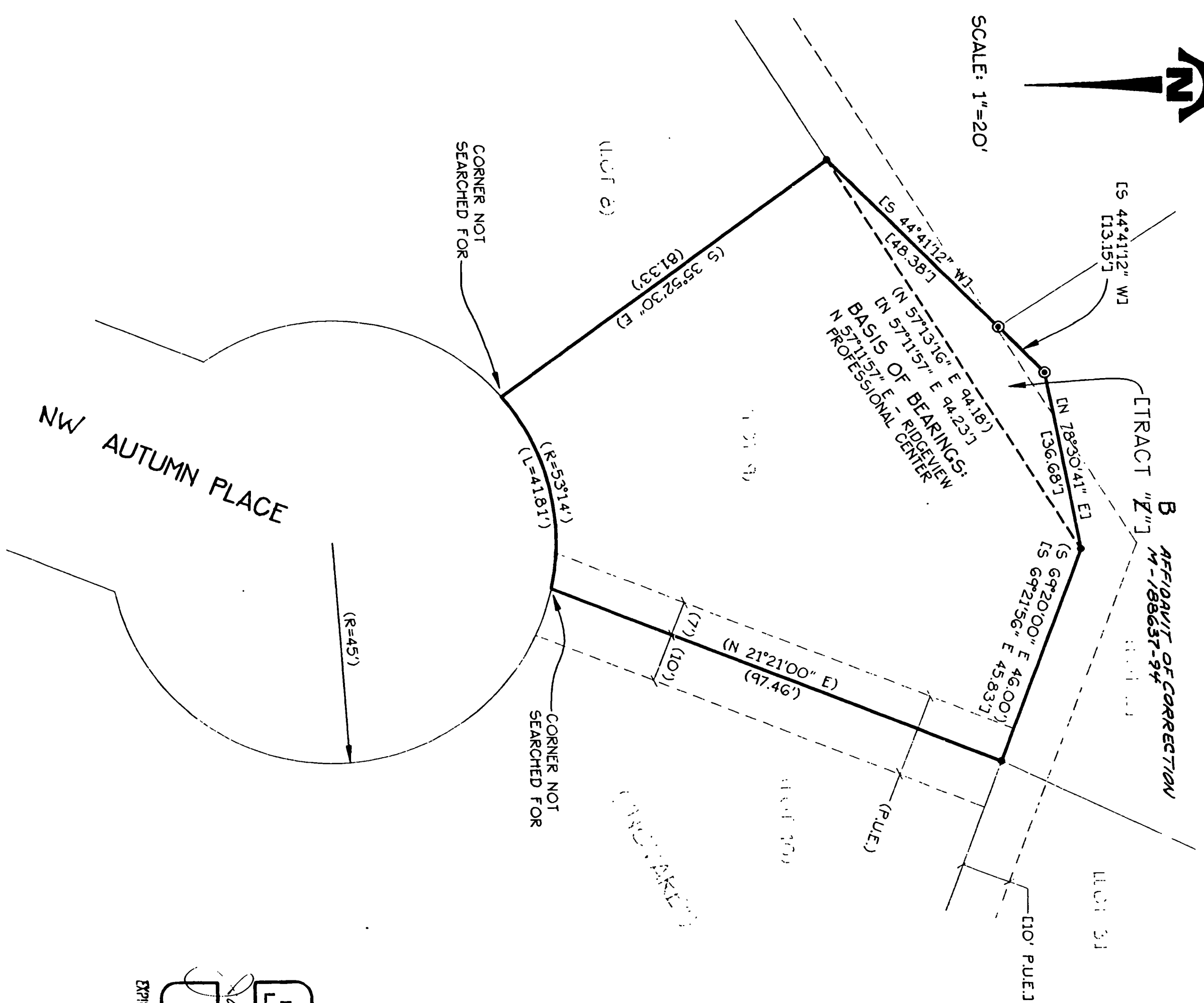


CRIDGELLEN PROFESSIONAL CENTER



SCALE: 1"=20'



CITY OF CORVALLIS FILE NO. LLA 94-0007
LOT LINE ADJUSTMENT
 AND
RECORD OF SURVEY

THOMAS AND SUSAN SAVAGE

"RIDGEVIEW PROFESSIONAL CENTER" AND
 "NOVARE", BOTH SUBDIVISIONS OF RECORD
 IN THE HERMAN C. LEWIS D.L.C. NO. 47
 IN THE
 NW 1/4 SECTION 24, T. 11 S., R. 5 W., W.M.,
 CITY OF CORVALLIS, BENTON COUNTY, OREGON
 JUNE 22, 1994

Benton County
 Surveyor's Office
 U.S. FILE NO. 8840
 FILING DATE 6-30-1994
 FILE SIZE 18x24

NARRATIVE:

THE PURPOSE OF THIS SURVEY IS TO DOCUMENT THE LOT LINE ADJUSTMENT OF THE PROPERTY SHOWN HERE ON, TRACT "B" IS BEING SOLD TO THE OWNERS OF LOT 9 IN "NOVARE". THE BOUNDARY OF TRACT "B" WAS ESTABLISHED BY MY SURVEY AND PLAT OF RIDGEVIEW PROFESSIONAL CENTER. ALL CORNERS OF TRACT "B" ARE SURVEYED AND LOCATED AND THIS MAP HERELT REFLECTS RECORD INFORMATION.

LEGEND:

- FOUND 5/8" ROD SET ON "NOVARE" PLAT
- ⊙ FOUND 5/8" ROD SET ON "RIDGEVIEW PROFESSIONAL CENTER" PLAT
- () RECORD INFORMATION FROM "NOVARE" PLAT
- [] RECORD INFORMATION FROM "RIDGEVIEW PROFESSIONAL CENTER" PLAT
- P.U.E. PUBLIC UTILITY EASEMENT

APPROVALS:

THIS PLAT APPROVED THIS 29th DAY OF JUNE, 1994.
 BY: Jack R. Burrell
 CORVALLIS CITY ENGINEER

THIS PLAT APPROVED THIS 29th DAY OF JUNE, 1994.
 BY: J. A. Maud
 DEVELOPMENT SERVICES MANAGER

REGISTERED
 PROFESSIONAL
 LAND SURVEYOR
 OREGON
 JACK R. BURRELL
 1930
 EXPIRATION DATE: 12/31/95

LOT LINE ADJUSTMENT
 AND
 RECORD OF SURVEY
 FOR
THOMAS AND SUSAN SAVAGE

K & D
 ENGINEERING, INC.
 276 N.W. HICKORY ST. ALBANY, OREGON
 P.O. BOX 725 503-923-2553
 CIVIL ENGINEERING—LAND PLANNING
 SURVEYING—CONSTRUCTION MANAGEMENT

SCALE: 1" = 20'
 DATE: JUNE 22, 1994
 DESGN. BY: —
 DRN. BY: C.L.R.
 CRO. BY: J.R.B.
 PLAT NO. 54-150

SHEET: **ONE**
 OF: **ONE**

6/22/94
 4150-LADMC