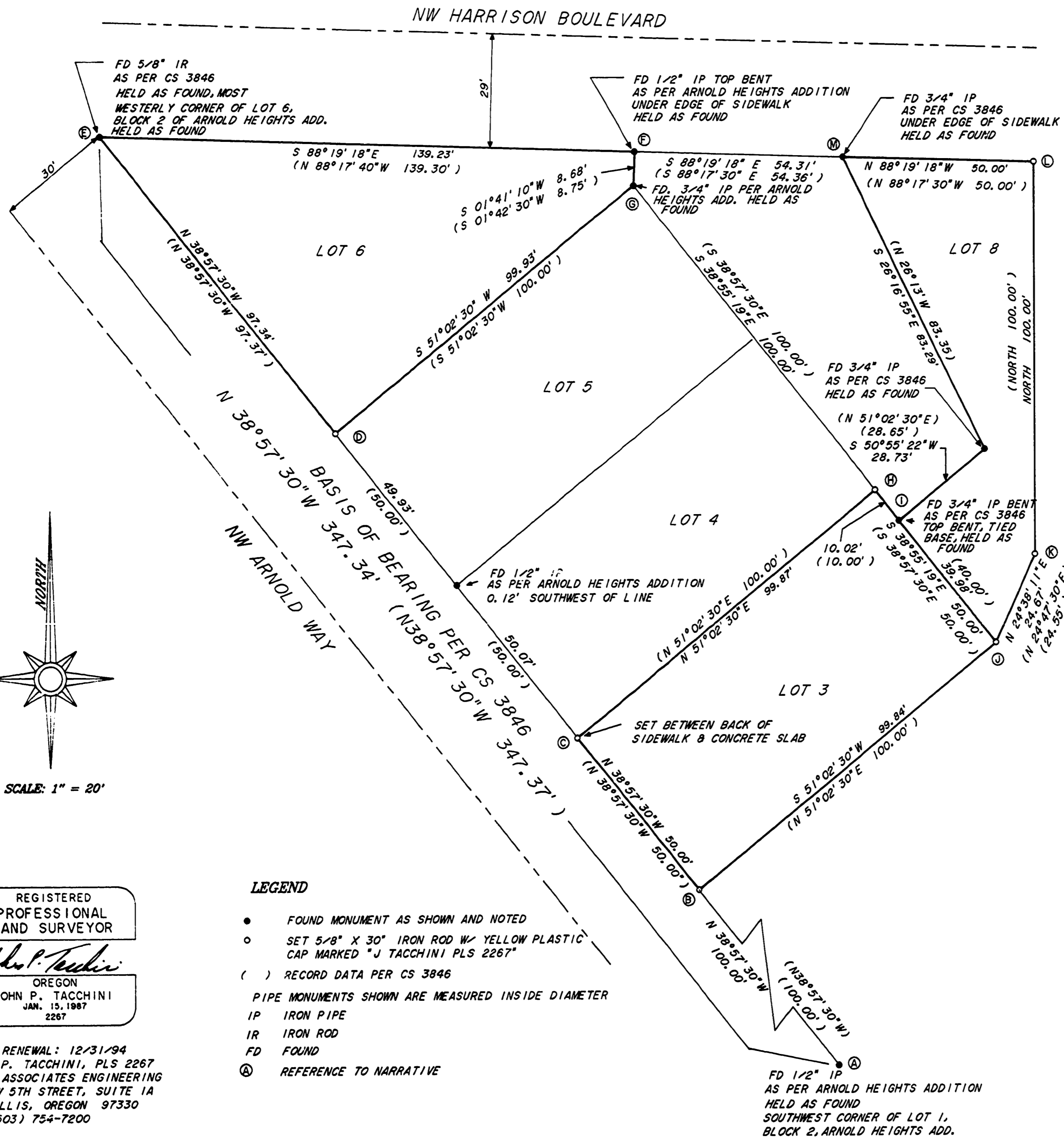


Benton County
Surveyor's
Office
C.S. FILE NO. 8869
FILING DATE 9-15-1994
FILE SIZE 18x24



RECORD OF SURVEY for M. DUANE RAWLINS

IN THE NORTHWEST 1/4 OF SECTION 34, TOWNSHIP 11 SOUTH,
RANGE 5 WEST, WILLAMETTE MERIDIAN, CITY OF CORVALLIS,
BENTON COUNTY, OREGON. LOT 6, LOT 3, AND A PORTION
OF LOT 8, BLOCK 2 ARNOLD HEIGHTS ADDITION TO THE CITY
OF CORVALLIS.

SEPTEMBER 14, 1994

NARRATIVE

The purpose of this survey is to locate and monument Lot 3, Lot 6 and a portion of Lot 8 of Arnold Heights Addition. The Basis of Bearings is the Northeasterly right of way line of Arnold Way as per C.S. 3846.

LOT 3
Monument 'B' & 'C' were set at record bearing & distance from found monument 'A', the S.W. corner of Lot 1, Arnold Heights Add.
Monument 'H' was set by holding the record bearing from 'C' and intersecting with a line established by holding 'G' & 'I'. Monument 'J' was set in the same manner from 'B'.

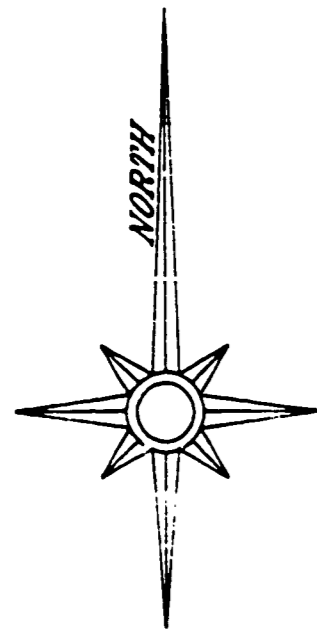
LOT 6
Found Monument 'E' & 'F' were held to establish the North line.
Monument 'D' was set at record bearing and distance from found Monument 'A'.

Portion of LOT 8
Monuments found on the West line were held to establish the West line, Found Monuments 'M', 'N' and 'I'. Monument 'L' was set at record distance from found Monument 'M'. Line was established by holding found monuments at 'E', 'F' and 'M'. Monument 'K' was set at record bearing and distance from 'L'. Monument 'J' was set as stated above.

All record data is as per C.S. 3846.

REFERENCE DATA OF RECORD

ARNOLD HEIGHTS ADDITION TO THE CITY OF CORVALLIS
PAGE 12 BOOK 4.
CS 3846
DEED - M-116562-89



SCALE: 1" = 20'

REGISTERED
PROFESSIONAL
LAND SURVEYOR

John P. Tacchini

OREGON
JOHN P. TACCHINI
JAN. 15, 1987
2267

RENEWAL: 12/31/94
JOHN P. TACCHINI, PLS 2267
LING & ASSOCIATES ENGINEERING
605 NW 5TH STREET, SUITE 1A
CORVALLIS, OREGON 97330
(503) 754-7200

LEGEND

- FOUND MONUMENT AS SHOWN AND NOTED
- SET 5/8" X 30" IRON ROD W/ YELLOW PLASTIC CAP MARKED "J TACCHINI PLS 2267"
- () RECORD DATA PER CS 3846
- PIPE MONUMENTS SHOWN ARE MEASURED INSIDE DIAMETER
- IP IRON PIPE
- IR IRON ROD
- FD FOUND
- Ⓐ REFERENCE TO NARRATIVE