

DRAWING NUMBER
8870

IRVINE HOLD CORPORATION • IRVINE, CALIFORNIA
DRAWING NUMBER 176

DRAWING NUMBER
8870

IRVINE HOLD CORPORATION • IRVINE, CALIFORNIA
DRAWING NUMBER 176

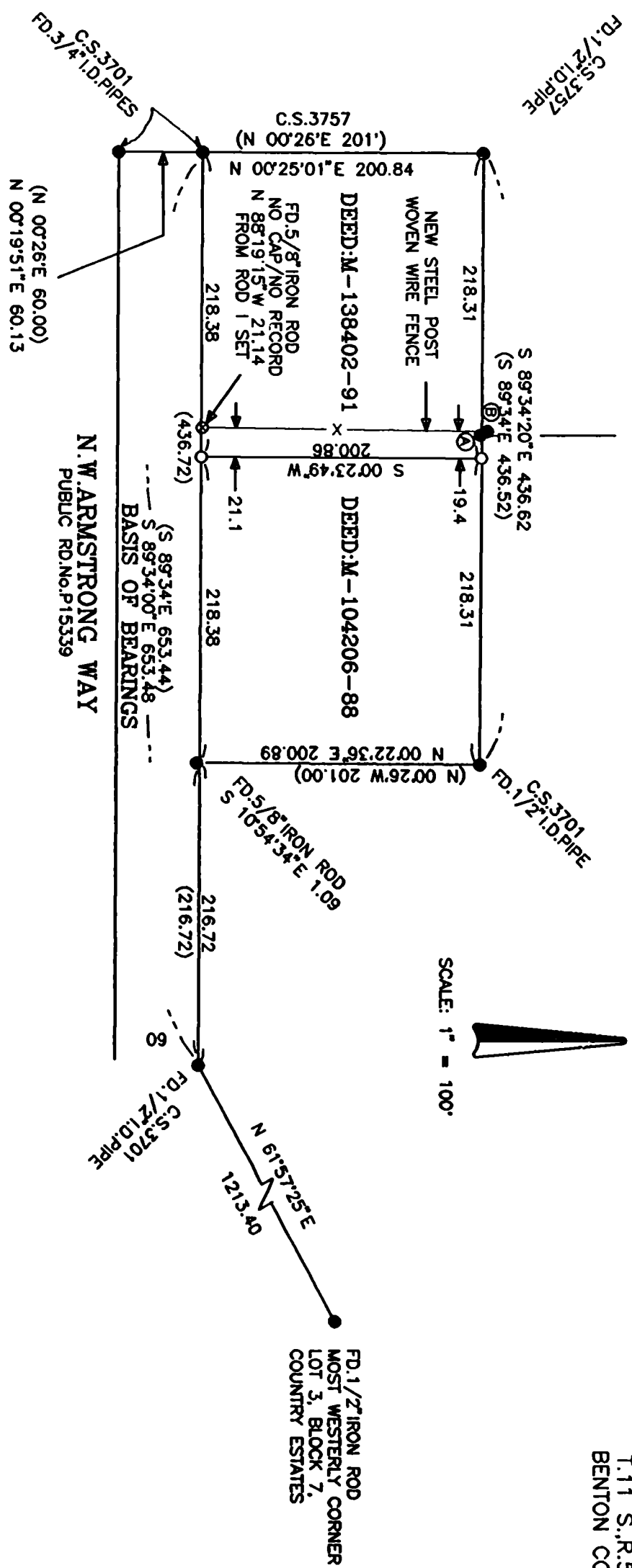
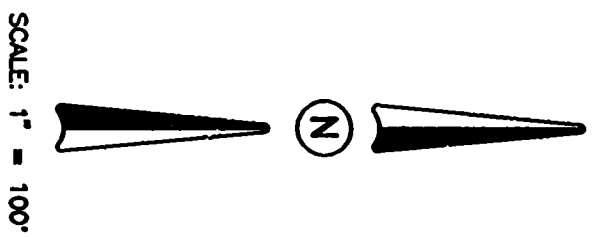
**Benton County
Surveyor's Office**

C.S. FILE NO. 8870
FILING DATE 9-21-1994
FILE SIZE 11x17

- ① FD 5/8" IRON ROD WITH YELLOW PLASTIC CAP STAMPED "J TACCHINI PLS 2287" SET IN C.S. 8815 FOR CORNER BETWEEN PROPERTIES TO THE NORTH. ROD IS S 86°15'49" W 18.81' FROM ROD 1 SET
- ② FD 5/8" IRON ROD SET IN C.S. 8258 AND SHOWN ON C.S. 8835. ROD IS N 78°19'18" W 19.75' FROM ROD 1 SET

MAP OF SURVEY
FOR
JAMES and SALLY KELLY
SEPT. 10, 1994

IN THE PRICE FULLER D.L.C. No. 37
SOUTHWEST 1/4, SECTION 1,
T.11 S., R.5 W., W.M.,
BENTON COUNTY, OREGON



LEGEND

- MONUMENT FOUND, TYPE NOTED
- ⊙ FD 5/8" IRON ROD, NOT OF RECORD, NO CAP ON ROD
- SET 5/8" X 30" IRON ROD WITH RED PLASTIC CAP STAMPED "D.W. HARMS, PLS 1079"
- () RECORD DATA FROM C.S. 3701, EXCEPT AS NOTED

NARRATIVE

THE PURPOSE OF THIS SURVEY IS TO MONUMENT THE DIMENSION LINE BETWEEN THE EAST AND WEST SIDES OF THE TRACT SHOWN ABOVE. DIMENSIONS FOUND AT THE S.W., N.W. & E. CORNERS OF THE PLOT SHOWN ARE CALLED FOR BY BOTH DEEDS AND FIELD INSTRUMENTS. A PIPE WAS ALSO CALLED FOR AT THE S.E. CORNER WHICH DID NOT SHOW. I CALCULATED THE POSITION OF THE S.E. CORNER BY HOLDING THE RECORD DISTANCE (216.72) FROM THE PIPE FOUND EAST OF THE S.E. CORNER.

REGISTERED
PROFESSIONAL
LAND SURVEYOR

Darryl W. Harms

OREGON
JULY SEVEN
DARRYL W. HARMS
1079
RENEWAL DATE 6/30/96

DARRYL W. HARMS, P.L.S.
P.O. BOX 1051
CORVALLIS, OR 97339
PHONE: (503) 758-5579