

DRAWING NUMBER
8875

PLAN HOLD CORPORATION • IRVINE, CALIFORNIA
REORDER BY NUMBER 075AR

DRAWING NUMBER
8875

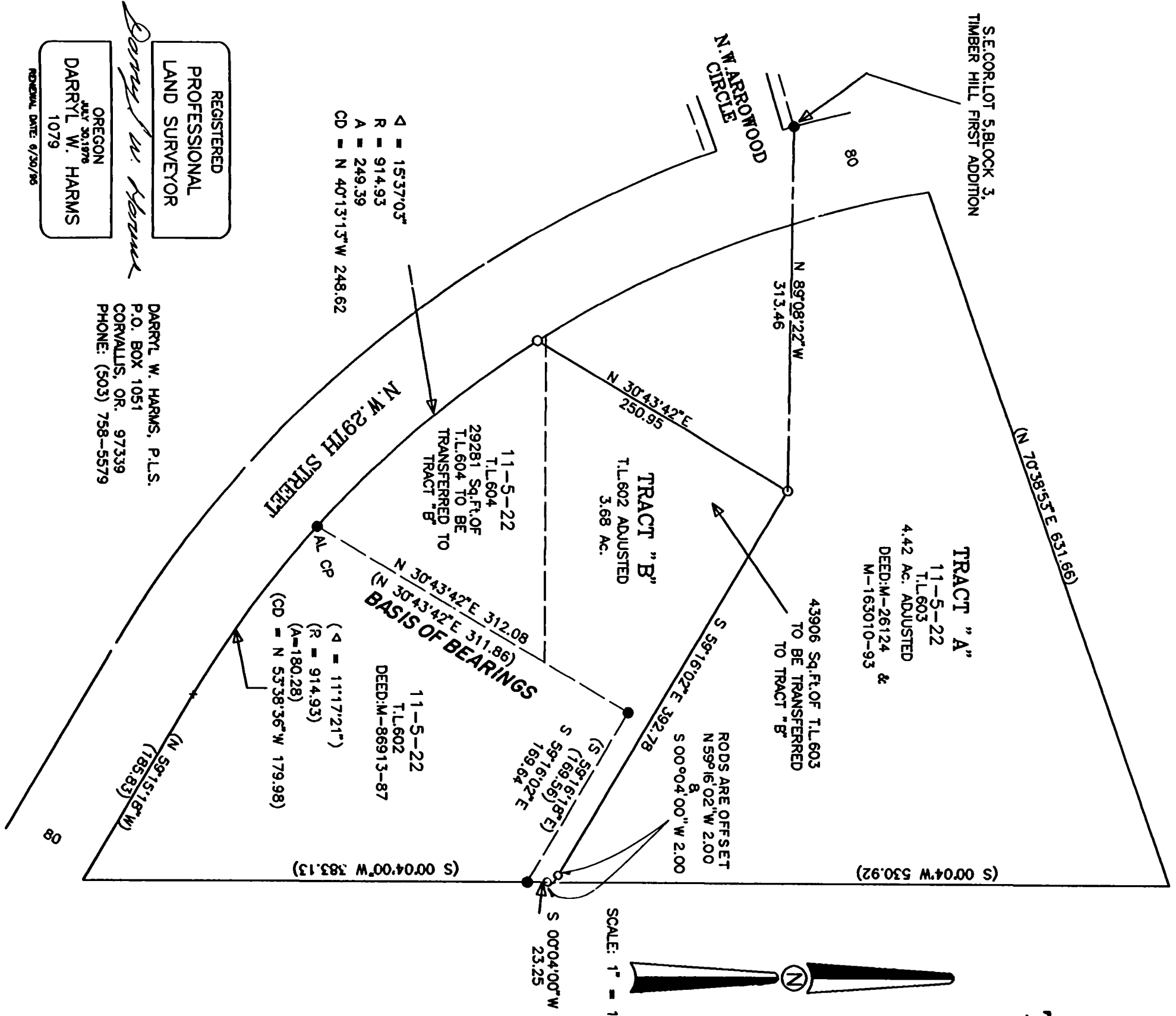
PLAN HOLD CORPORATION • IRVINE, CALIFORNIA
REORDER BY NUMBER 075AR

TIMBERHILL ATHLETIC & COURT CLUB

AUG. 30, 1994

MAP OF PROPERTY LINE ADJUSTMENT
FOR

IN THE S.W. 1/4, SECTION 22,
T. 11 S., R. 5 W., W.M.,
BENTON COUNTY, OREGON



SCALE: 1" = 100'

LEGEND

- 5/8" IRON ROD FOUND, EXCEPT AS NOTED
- SET 5/8" X 30" IRON ROD WITH RED PLASTIC CAP STAMPED "DARRYL HARMIS, P.L.S. 1079"
- () RECORD DATA OF/OR CALCULATED FROM C.S. 6884 OR DEED M-16124

NARRATIVE

THIS MAP REPRESENTS THE SURVEY REQUIRED TO SATISFY CORVALLIS DEVELOPMENT SERVICES FILE NO. LLA-94-0017. FOUND MONUMENTS WERE HELD IN POSITION WITH THE NORTHEASTERLY RIGHT-OF-WAY LINE OF N.W. 29TH STREET BEING CALCULATED BY DISTANCE-DISTANCE FROM THE OLD S.W. CORNER OF TAX LOT 602 AND THE S.E. CORNER OF LOT 5, BLOCK 3, TIMBERHILL FIRST ADDITION TO DETERMINE THE RADIUS POINT AND THEN HOLDING RECORD RADIUS LENGTH.

APPROVALS

Lee Marshall
DEVELOPMENT SERVICES MANAGER
DATE: 9-30-94

[Signature]
CORVALLIS CITY ENGINEER
DATE: 9-30-94

REGISTERED
PROFESSIONAL
LAND SURVEYOR

Darryl W. Harms

OREGON
JULY 30, 1976
DARRYL W. HARMIS
1079

DARRYL W. HARMIS, P.L.S.
P.O. BOX 1051
CORVALLIS, OR. 97339
PHONE: (503) 758-5579

Benton County
Surveyor's Office

C.S. FILE NO. 8875
FILING DATE 10-5-1994
FILE SIZE 11x17