

DRAWING NUMBER
8887

PLAN HOLD CORPORATION • IRVINE, CALIFORNIA
REORDER BY NUMBER 075AR

DRAWING NUMBER

PLAN HOLD CORPORATION • IRVINE, CALIFORNIA
REORDER BY NUMBER 075AR

DRAWING NUMBER

PLAN HOLD CORPORATION • IRVINE, CALIFORNIA
REORDER BY NUMBER 075AR

DRAWING NUMBER
8887

PLAN HOLD CORPORATION • IRVINE, CALIFORNIA
REORDER BY NUMBER 075AR

**Benton County
Surveyor's Office**

C.S. FILE NO 8887
FILING DATE 11-1-1994
FILE SIZE 18x24

RECORD OF SURVEY
FOR
STARKER FORESTS, INC.

LOCATED IN
LOTS 5, 6, 7, AND 8, BLOCK 2 OF SRP ADDITION
IN THE SE 1/4 SEC. 4, T. 12 S., R. 5 W., W.M.
CITY OF CORVALLIS, BENTON COUNTY, OREGON

OCTOBER 14, 1994



SCALE: 1" = 50'

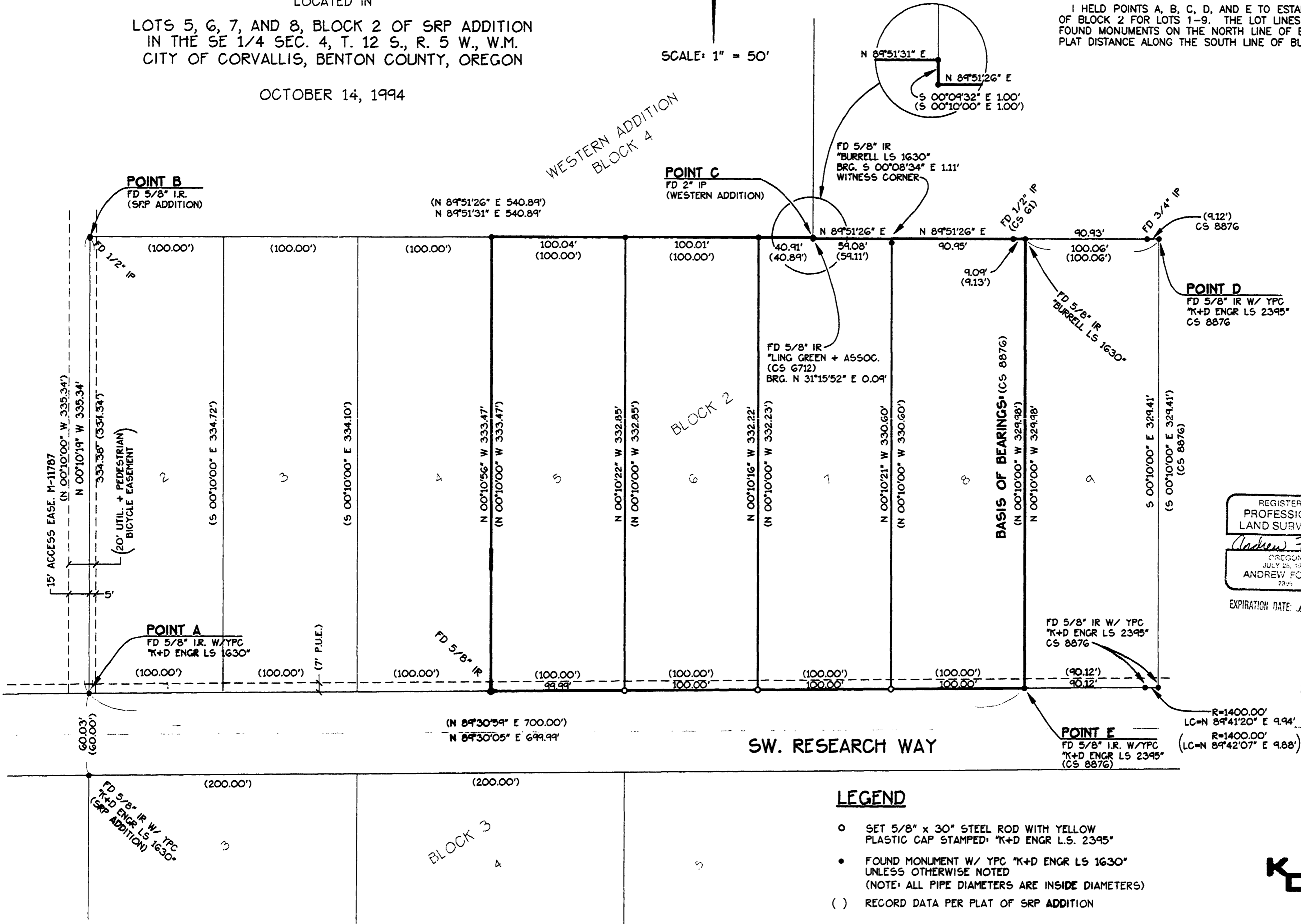
NARRATIVE:

PURPOSE:

THE PURPOSE OF THIS SURVEY IS TO MONUMENT THE LOT CORNERS OF LOTS 5-8 OF BLOCK 2 TO THE "S.R.P. ADDITION".

BOUNDARY DETERMINATION:

I HELD POINTS A, B, C, D, AND E TO ESTABLISH THE BOUNDARY OF BLOCK 2 FOR LOTS 1-9. THE LOT LINES WERE ESTABLISHED BY FOUND MONUMENTS ON THE NORTH LINE OF BLOCK 2 AND BY RECORD PLAT DISTANCE ALONG THE SOUTH LINE OF BLOCK 2 AS SHOWN.



REGISTERED
PROFESSIONAL
LAND SURVEYOR
Andrew Foster
OREGON
JULY 28, 1984
ANDREW FOSTER
2322

EXPIRATION DATE: 12-31-95

LEGEND

- SET 5/8" x 30" STEEL ROD WITH YELLOW PLASTIC CAP STAMPED: "K+D ENGR L.S. 2345"
- FOUND MONUMENT W/ YPC "K+D ENGR L.S. 1630" UNLESS OTHERWISE NOTED (NOTE: ALL PIPE DIAMETERS ARE INSIDE DIAMETERS)
- () RECORD DATA PER PLAT OF SRP ADDITION

KD ENGINEERING, INC.
276 N.W. HICKORY STREET
POST OFFICE, BOX 725
ALBANY, OREGON 97321
94233-SUDWG C.L.R.
11/1/94