

**Benton Co. Surveyors Office**  
 C. S. FILE NO. 06661  
 FILING DATE 6-13-78  
 FILE SIZE 18"

**MALCOMB CONSTRUCTION**  
 LOT 3, BLOCK 1, SPRINGHILL ESTATES  
 NW 1/4, SEC. 31, T.10S., R.3W., BENTON COUNTY, ORE.  
 SCALE 1"=20'

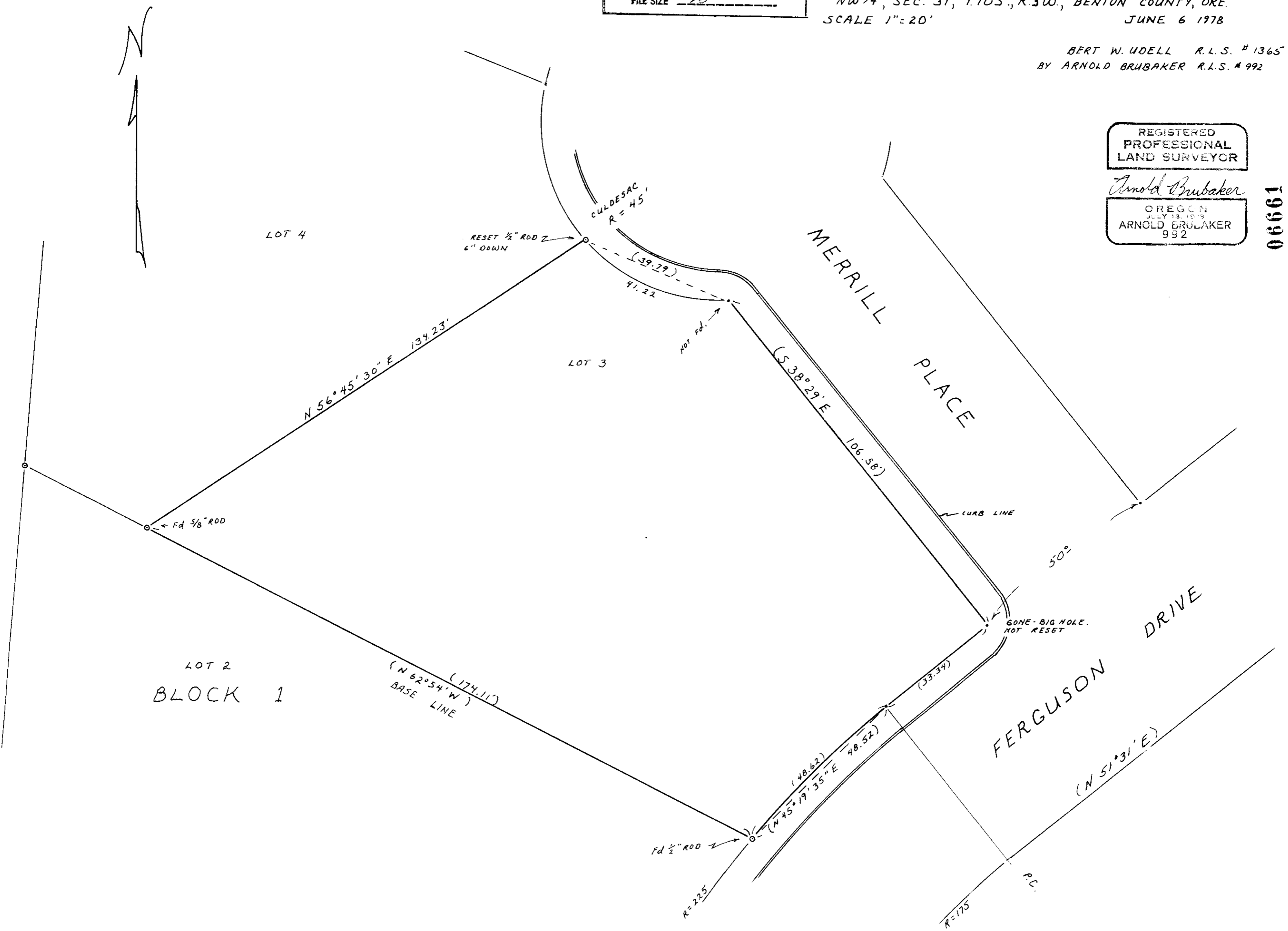
BERT W. UDELL R.L.S. # 1365  
 BY ARNOLD BRUBAKER R.L.S. # 992

REGISTERED  
 PROFESSIONAL  
 LAND SURVEYOR

*Arnold Brubaker*

OREGON  
 JULY 13, 1973  
 ARNOLD BRUBAKER  
 992

06661



6661