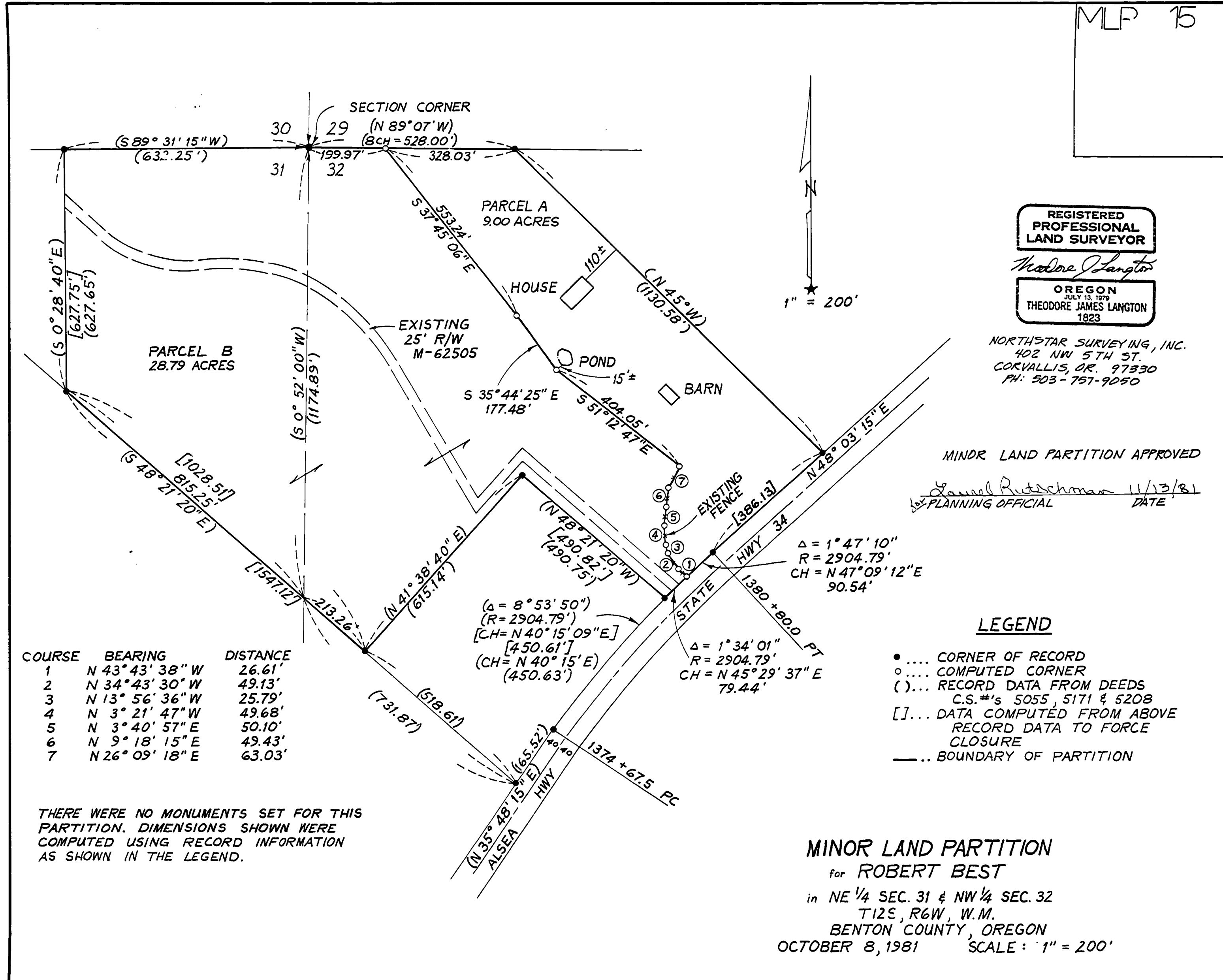


MLP 15



REGISTERED
PROFESSIONAL
LAND SURVEYOR

Theodore Langton

OREGON
JULY 13, 1979
THEODORE JAMES LANGTON
1823

NORTHSTAR SURVEYING, INC.
402 NW 5TH ST.
CORVALLIS, OR. 97330
PH: 503-757-9050

MINDR LAND PARTITION APPROVED

Januel Rutschman 11/13/81
PLANNING OFFICIAL DATE

COURSE	BEARING	DISTANCE
1	N 43° 43' 38" W	26.61'
2	N 34° 43' 30" W	49.13'
3	N 13° 56' 36" W	25.79'
4	N 3° 21' 47" W	49.68'
5	N 3° 40' 57" E	50.10'
6	N 9° 18' 15" E	49.43'
7	N 26° 09' 18" E	63.03'

THERE WERE NO MONUMENTS SET FOR THIS PARTITION. DIMENSIONS SHOWN WERE COMPUTED USING RECORD INFORMATION AS SHOWN IN THE LEGEND.

LEGEND

- CORNER OF RECORD
- COMPUTED CORNER
- () ... RECORD DATA FROM DEEDS
C.S.#'s 5055, 5171 & 5208
- [] ... DATA COMPUTED FROM ABOVE
RECORD DATA TO FORCE
CLOSURE
- ... BOUNDARY OF PARTITION

MINOR LAND PARTITION
for ROBERT BEST
in NE 1/4 SEC. 31 & NW 1/4 SEC. 32
T12S, R6W, W.M.
BENTON COUNTY, OREGON
OCTOBER 8, 1981 SCALE: 1" = 200'