

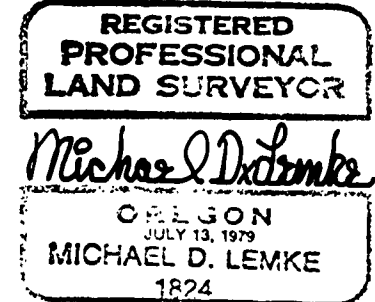
MAP OF MINOR LAND PARTITION FOR  
**GEORGE EDWARD SHROYER**

AND  
**HELEN MAY SHROYER**

IN THE SOUTH 1/2 OF SECTION 11 AND  
THE NORTH 1/2 OF SECTION 14,  
THE DAVID HENDERSON DONATION LAND CLAIM NO. 46,  
AND THE WILLIAM MATZGERS DONATION LAND CLAIM NO. 50,  
TOWNSHIP 12 SOUTH, RANGE 6 WEST OF THE WILLAMETTE MERIDIAN,  
BENTON COUNTY, OREGON  
FEBRUARY 2, 1982.

**NARRATIVE:** THIS IS A COMPOSITE DRAWING. IT SHOWS NEW MEASUREMENTS TO POINTS WHICH CONTROL THE POSITION OF THE "PROPOSED ADJUSTED TAX LOT LINE" AND CALCULATED AND RECORD BEARINGS AND DISTANCES USED TO COMPUTE THE APPROXIMATE AREAS OF THE TWO NEW PARCELS SHOWN HEREON. NO MONUMENTS ARE REQUIRED TO BE SET BY THE PRESENT 'MINOR LAND PARTITION' RULES ON PARCELS BIGGER THAN '5' ACRES AND NONE WERE SET. ON SITE MEASUREMENTS WERE MADE TO RELATE THE SOUTH LINE OF THE 'WILLIAM MATZGERS DONATION LAND CLAIM (D.L.C.) TO THE NEW DIVISION LINE BETWEEN "PARCEL A" AND "PARCEL B". I BASED THE ATTACHED LEGAL DESCRIPTIONS OF "PARCEL A" AND "PARCEL B" ON THE DATA SHOWN HEREON.

*Michael D. Lemke*  
MICHAEL D. LEMKE R.L.S.#1824  
112 BULLEVAARD, PHILOMATH,  
BENTON COUNTY OREGON 97370  
TELEPHONE: 929-6380

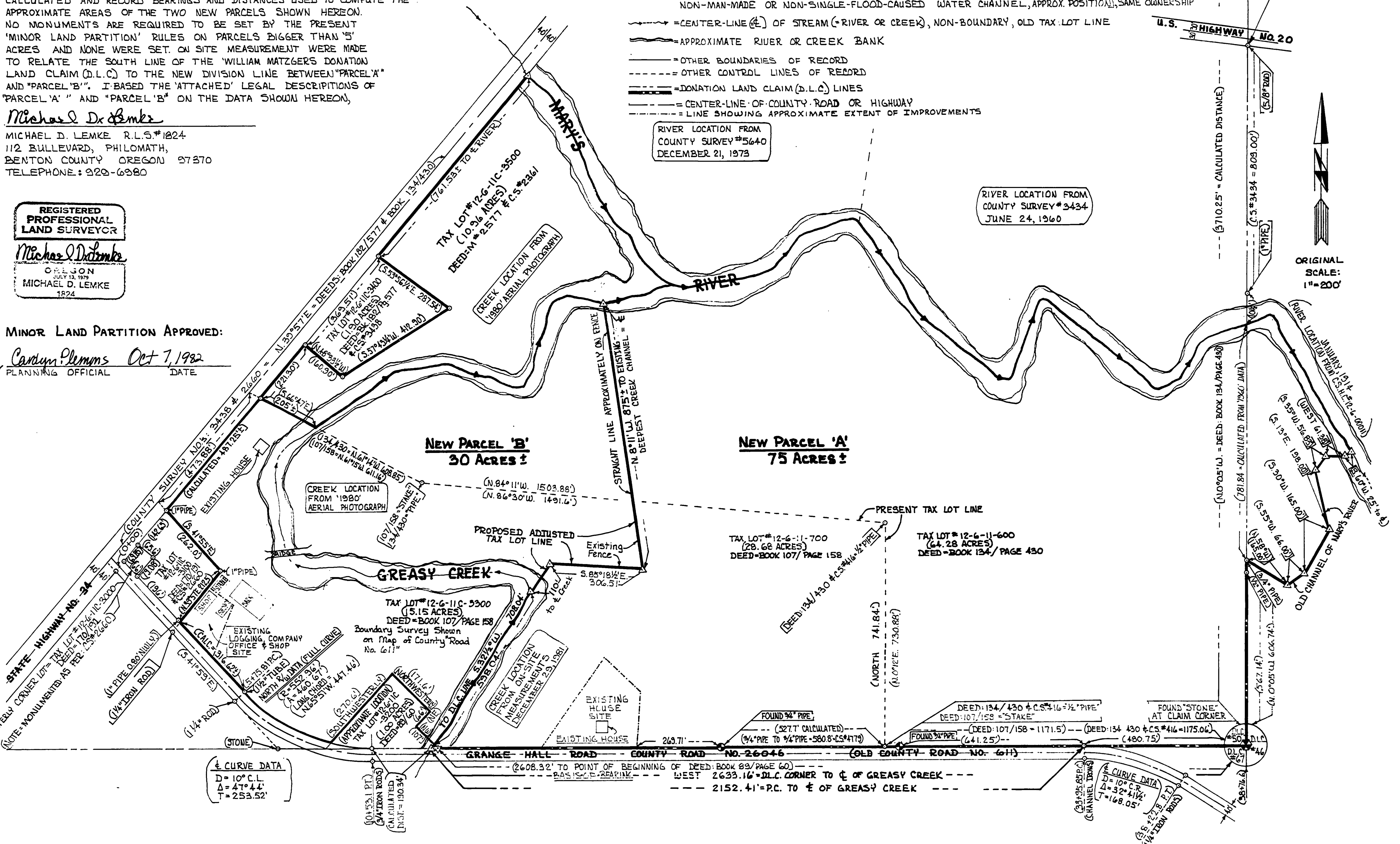


MINOR LAND PARTITION APPROVED:

*Carlyn Plimms* Oct 7, 1982  
PLANNING OFFICIAL DATE

**LEGEND:** NOTE: AERIAL PHOTOGRAPH SOURCE = AGRICULTURE STABILIZATION & CONSERVATION SERVICE

- ⊗ = CORNER TO DONATION LAND CLAIM NUMBERS (D.L.C.#) AS INDICATED
- △ = UNMONUMENTED, CALCULATED CORNER OF NEW PARCEL OR CORNER OF EXISTING PARCEL WHERE NO RECORD MONUMENT IS CALLED FOR
- = 5/8" IRON ROD OR MONUMENTED AS INDICATED, FROM COUNTY SURVEY OR DEED SHOWN HEREON.
- = EXISTING MONUMENTS (FROM C.S.#4779) USE AS CONTROL FOR "PROPOSED ADJUSTED TAX LOT LINE."
- ( ) = RECORD DATA FROM COUNTY RECORD SOURCE INDICATED HEREON.  
NOTE: THAT DATA NOT SHOWN IN PARENTHESES IS MEASURE DATA, BASED ON COUNTY SURVEY NUMBER (C.S.#) 4779.
- = BOUNDARY LINE OF NEW PARCELS (AS STRAIGHT LINE); OR SAME OWNERSHIP, PROPOSED
- = BOUNDARY LINE OF NEW PARCELS (AS A LINE THAT FOLLOWS THE DEEPEST NON-MAN-MADE OR NON-SINGLE-FLOOD-CAUSED WATER CHANNEL, APPROX. POSITION), SAME OWNERSHIP
- = CENTER-LINE (±) OF STREAM (- RIVER OR CREEK), NON-BOUNDARY, OLD TAX LOT LINE
- = APPROXIMATE RIVER OR CREEK BANK
- = OTHER BOUNDARIES OF RECORD
- = OTHER CONTROL LINES OF RECORD
- = DONATION LAND CLAIM (D.L.C.) LINES
- = CENTER-LINE OF COUNTY ROAD OR HIGHWAY
- = LINE SHOWING APPROXIMATE EXTENT OF IMPROVEMENTS



± CURVE DATA  
D = 10° C.L.  
Δ = 47° 44'  
T = 253.52'

± CURVE DATA  
D = 10° C.R.  
Δ = 32° 41 1/2'  
T = 168.05'