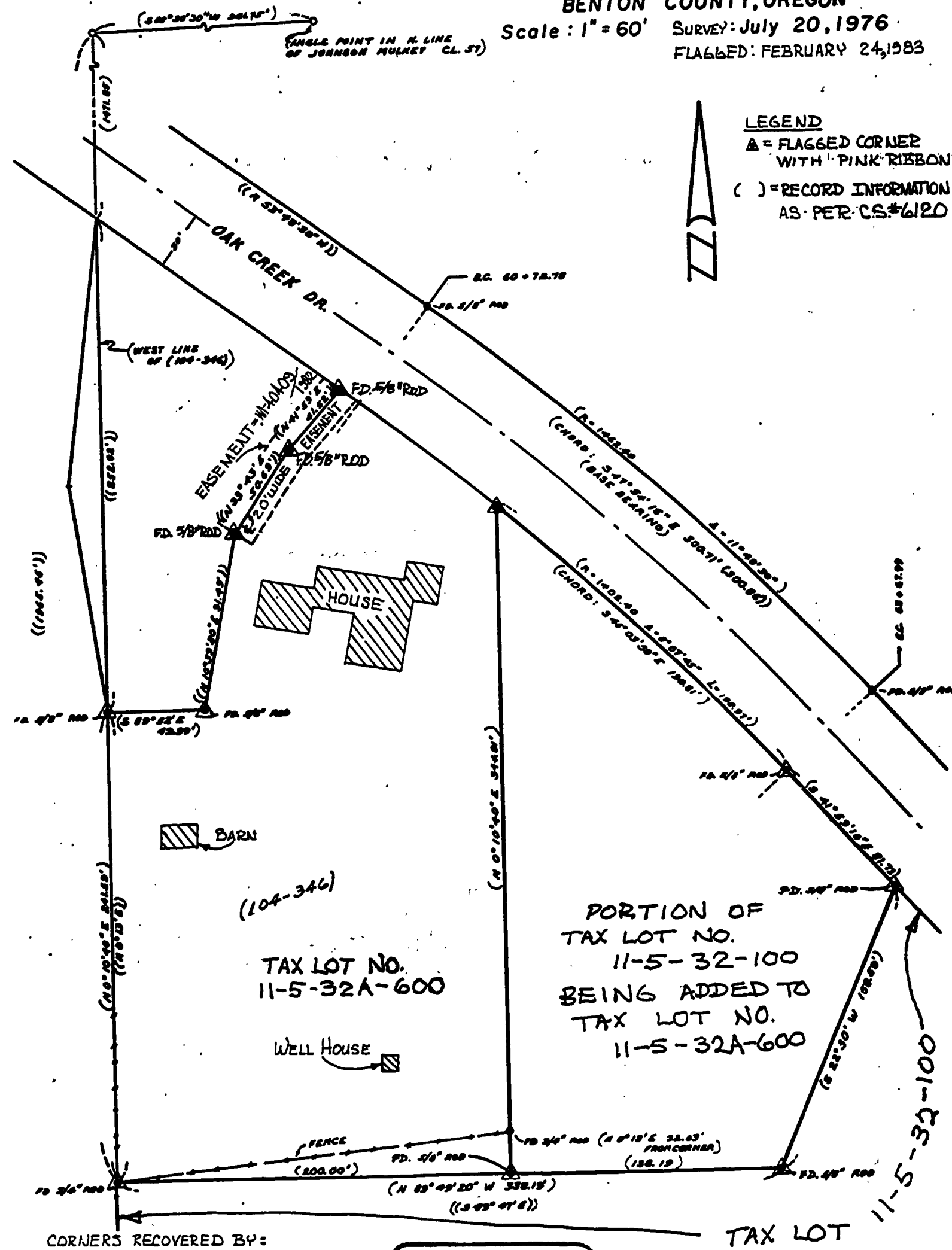


771.D # 36  
3-883

MINOR LAND PARTITION FOR  
CRAIG McELDOWNEY  
IN THE NORTHWEST QUARTER OF SECT. 32  
T. 11 S., R. 5 W., OF W. M.  
BENTON COUNTY, OREGON

Scale: 1" = 60' SURVEY: July 20, 1976  
FLAGGED: FEBRUARY 24, 1983



CORNERS RECOVERED BY:  
CRAIG McELDOWNEY  
&  
MICHAEL D. LEMKE  
112 BULLEVAR  
PHILOMATH, OREGON  
PHONE: 929-6980

REGISTERED  
PROFESSIONAL  
LAND SURVEYOR  
*Michael D. Lemke*  
OREGON  
JULY 13, 1979  
MICHAEL D. LEMKE  
1824

APPROVED:  
*Carlyn Plamors 3/9/83*  
PLANNING OFFICIAL