

MINOR LAND PARTITION for DAVE BUCHANAN

in THE J. OWNBY DLC NO. 57 and J. HARRIS DLC NO. 43
in SW 1/4 SEC 4, SE 1/4 SEC 5, NE 1/4 SEC 8
and NW 1/4 SEC 9, T13S, R5W, W.M.
BENTON COUNTY, OREGON
DECEMBER 19, 1983 SCALE: 1"=400'

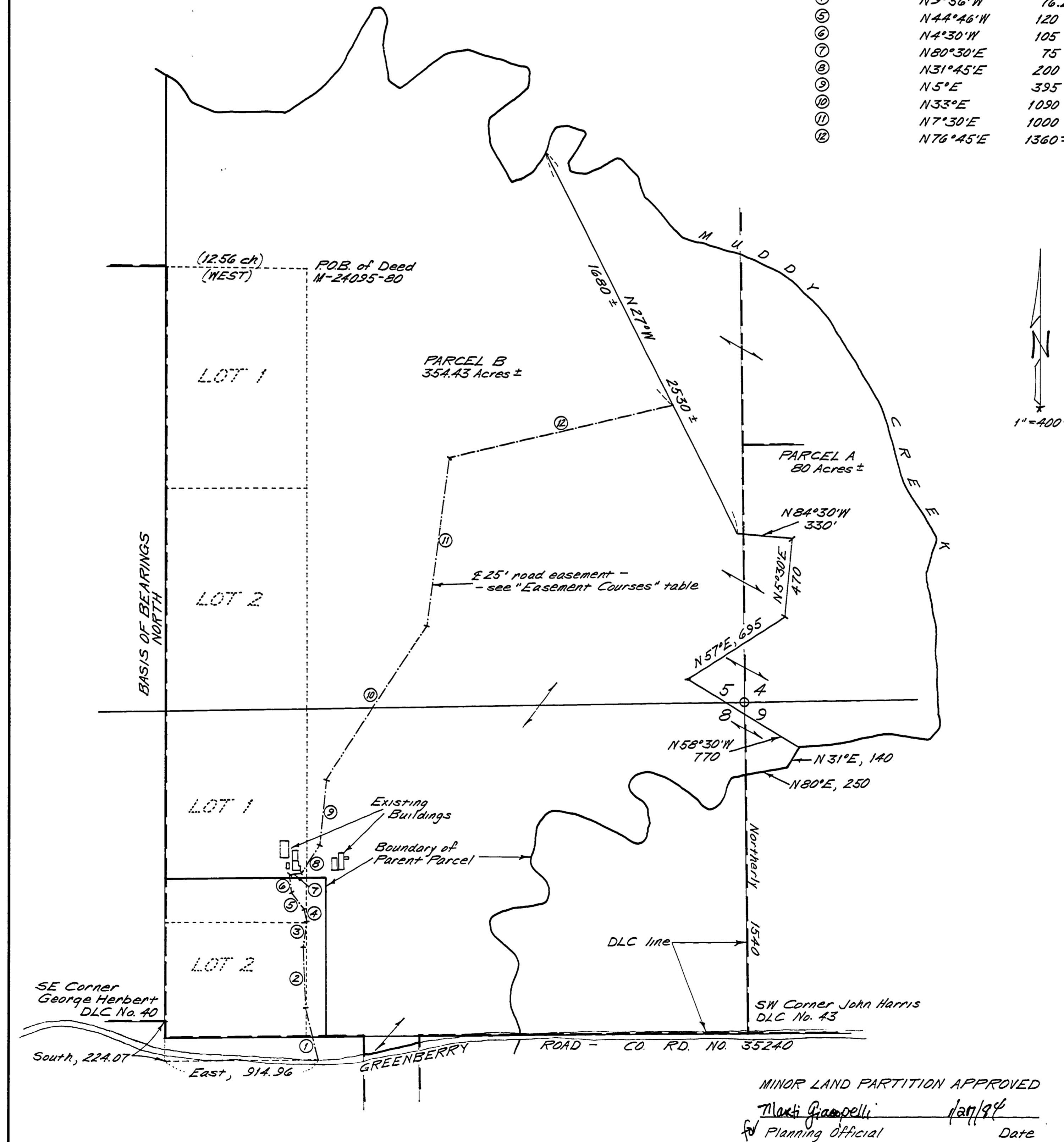


Northstar Surveying Inc.
402 NW 5th St.
Corvallis, Oregon, 97330
PH: 757-3050

NARRATIVE

The information shown on this map was taken from 1982, 1"=400' aerial photos obtained from the Benton County Surveyor's Office. No field work was required or authorized by the client. Distances taken from the photos were checked against several record surveys and checked very well. Bearings are based on an assumed system along the west line. Areas shown are close approximations only.

EASEMENT COURSES		
COURSE #	BEARING	DISTANCE
①	N13°41'W	302
②	N4°36'W	368.67
③	N8°36'E	176.32
④	N9°56'W	76.24
⑤	N44°46'W	120
⑥	N4°30'W	105
⑦	N80°30'E	75
⑧	N31°45'E	200
⑨	N5°E	395
⑩	N33°E	1090
⑪	N7°30'E	1000
⑫	N76°45'E	1360±



MINOR LAND PARTITION APPROVED
Maxi Giampelli 12/19/83
Planning Official Date