

MLP DWG # 51
5-4-84 PM

5855

ORIGINAL

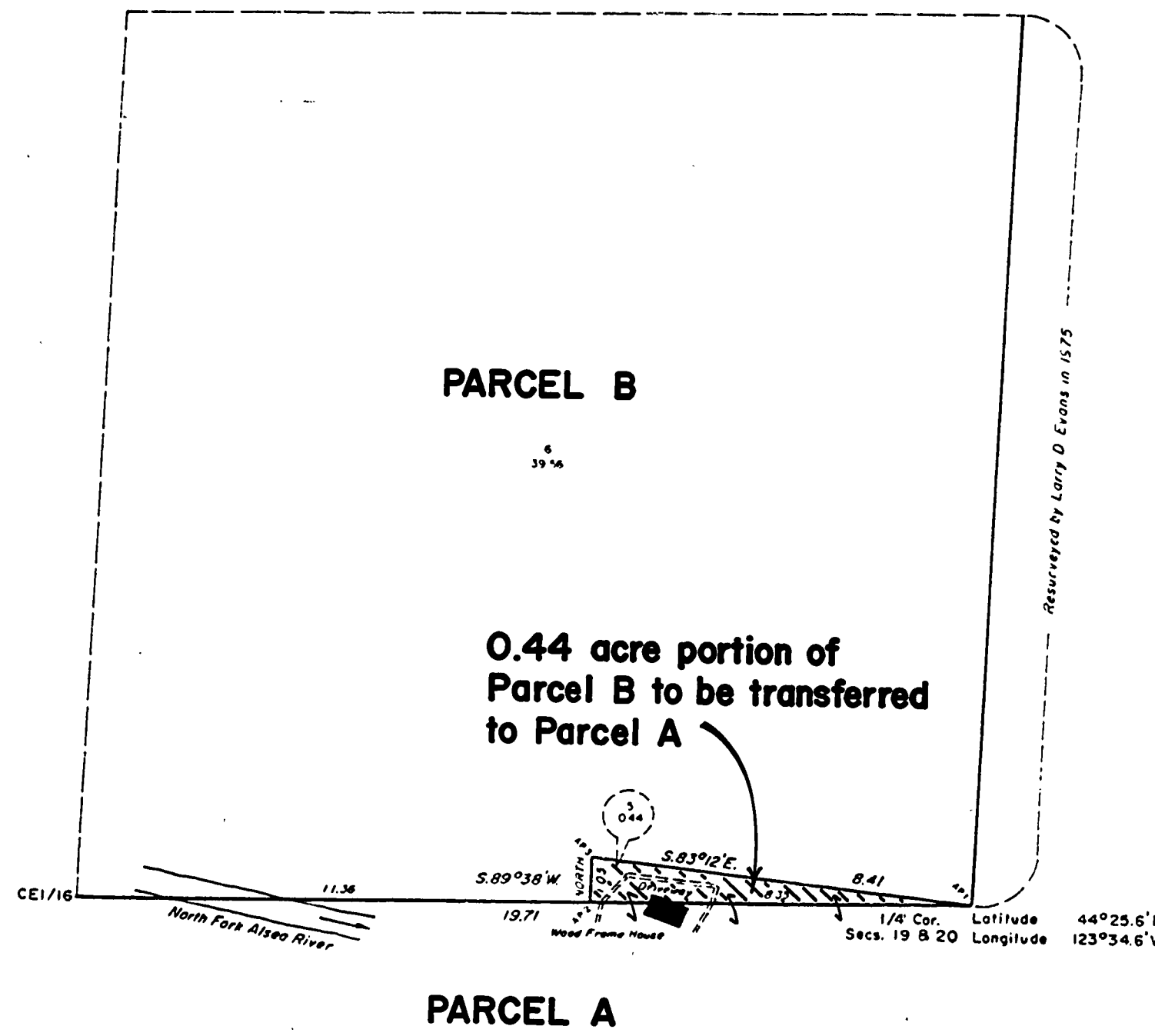
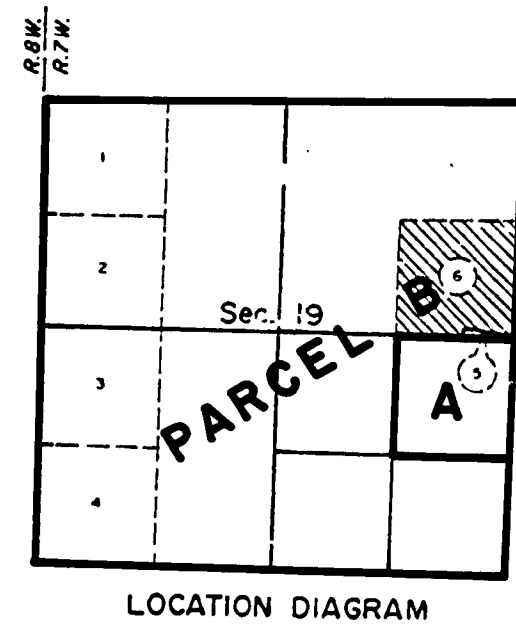
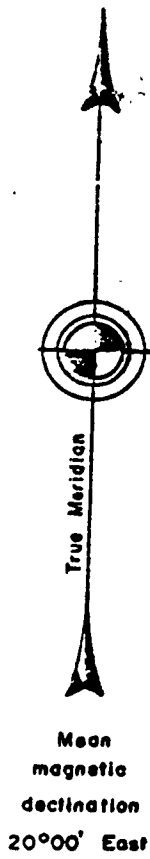
TOWNSHIP 13 SOUTH, RANGE 7 WEST, OF THE WILLAMETTE MERIDIAN, OREGON.

DEPENDENT RESURVEY AND METES-AND-BOUNDS SURVEY

Lot Line Adjustment for Mary France & Bureau of Land Management

SE1/4 NE1/4 OF SECTION 19

MLP FILE
CLOSED
9/85 KK.



Resurveyed by Larry D. Evans in 1978

A history of surveys is contained in the field notes.

This plat represents a dependent resurvey of a portion of the east and west center line of section 19, and the metes-and-bounds survey of Lot 5, in the southeast quarter of the northeast quarter of section 19, T. 13 S., R. 7 W., Willamette Meridian, Oregon.

Except as shown hereon, the lottings and areas are as shown on the plat approved June 4, 1892 and accepted April 24, 1978.

The survey was executed by Frank A. Tuers, Cadastral Surveyor, on November 10, 1982, pursuant to Special Instructions for Group No. 1126, Oregon, dated October 18, 1982.

Timber in this area consists of fir, cedar, hemlock, madrone, maple, alder, chinquapin, and dogwood.

UNITED STATES DEPARTMENT OF THE INTERIOR
BUREAU OF LAND MANAGEMENT
Portland, Oregon January 24, 1983

This plat is strictly conformable to the approved field notes, and the survey, having been correctly executed in accordance with the requirements of law and the regulations of this Bureau, is hereby accepted.

For the Director

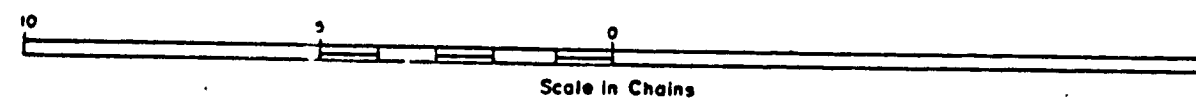
William W. Glenn

Chief Cadastral Surveyor of Oregon

Lot Line Adjustment Approved:

Planning Official Date

MLP Drawing prepared by County staff



MLP DWG 51
5-4-82 m.

5855

ORIGINAL

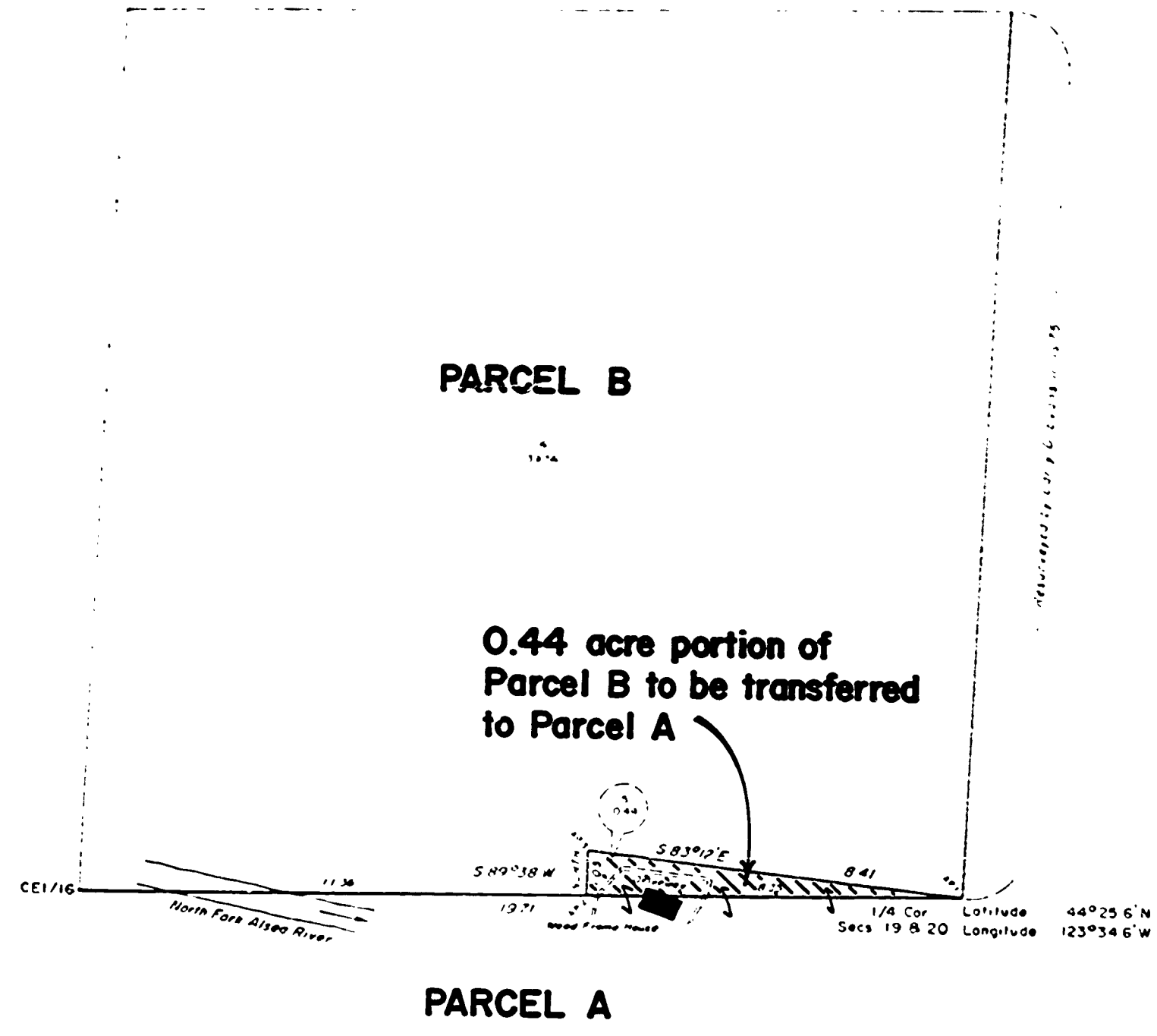
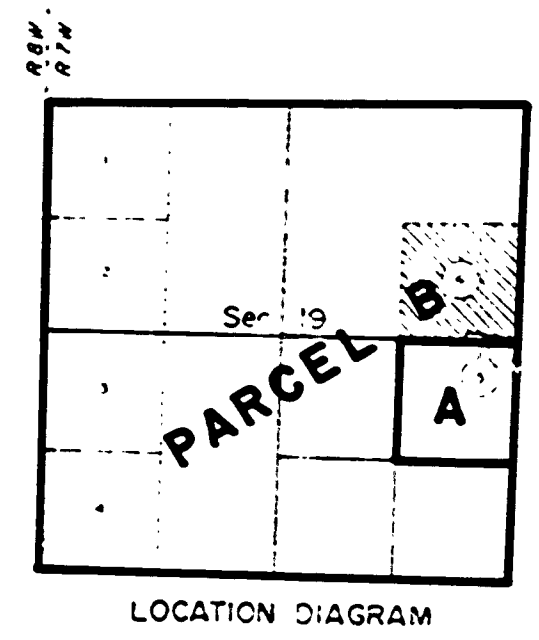
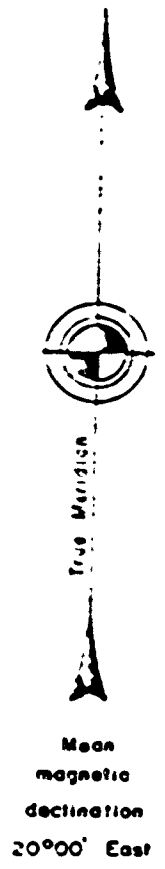
TOWNSHIP 13 SOUTH, RANGE 7 WEST, OF THE WILLAMETTE MERIDIAN, OREGON.

DEPENDENT RESURVEY AND METES-AND-BOUNDS SURVEY

Lot Line Adjustment for Mary France & Bureau of Land Management

SE 1/4 NE 1/4 OF SECTION 19

MLP FILE
CLOSED
1/85 KK.



A history of surveys is contained in the field notes.
This plat represents a dependent resurvey of a portion of the east and west center line of Section 19, and the metes-and-bounds survey of Lot 1 in the southeast quarter of the northeast quarter of Section 19, T. 13 S., R. 7 W., Willamette Meridian, Oregon.
Except as shown hereon, the lottings and areas are as shown in the plat approved June 4, 1892 and amended April 24, 1922.
The survey was executed by Frank A. Tiers, Licensed Surveyor, on November 12, 1982, pursuant to Special Instructions for Group No. 1125, approved October 18, 1982.
Timber in this area consists of fir, cedar, hemlock, madrone, maple, alder, chinquapin, and aspen.

UNITED STATES DEPARTMENT OF THE INTERIOR
BUREAU OF LAND MANAGEMENT
Portland, Oregon January 24, 1983

This plat is strictly conformable to the approved field notes, and the survey, having been correctly executed in accordance with the requirements of law and the regulations of this Bureau, is hereby accepted.

For the Director

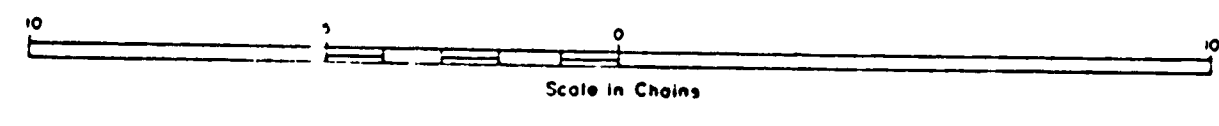
William W. Glenn

Chief Cadastral Surveyor of Oregon

Lot Line Adjustment Approved:

Planning Official Date

MLP Drawing prepared by County staff



000