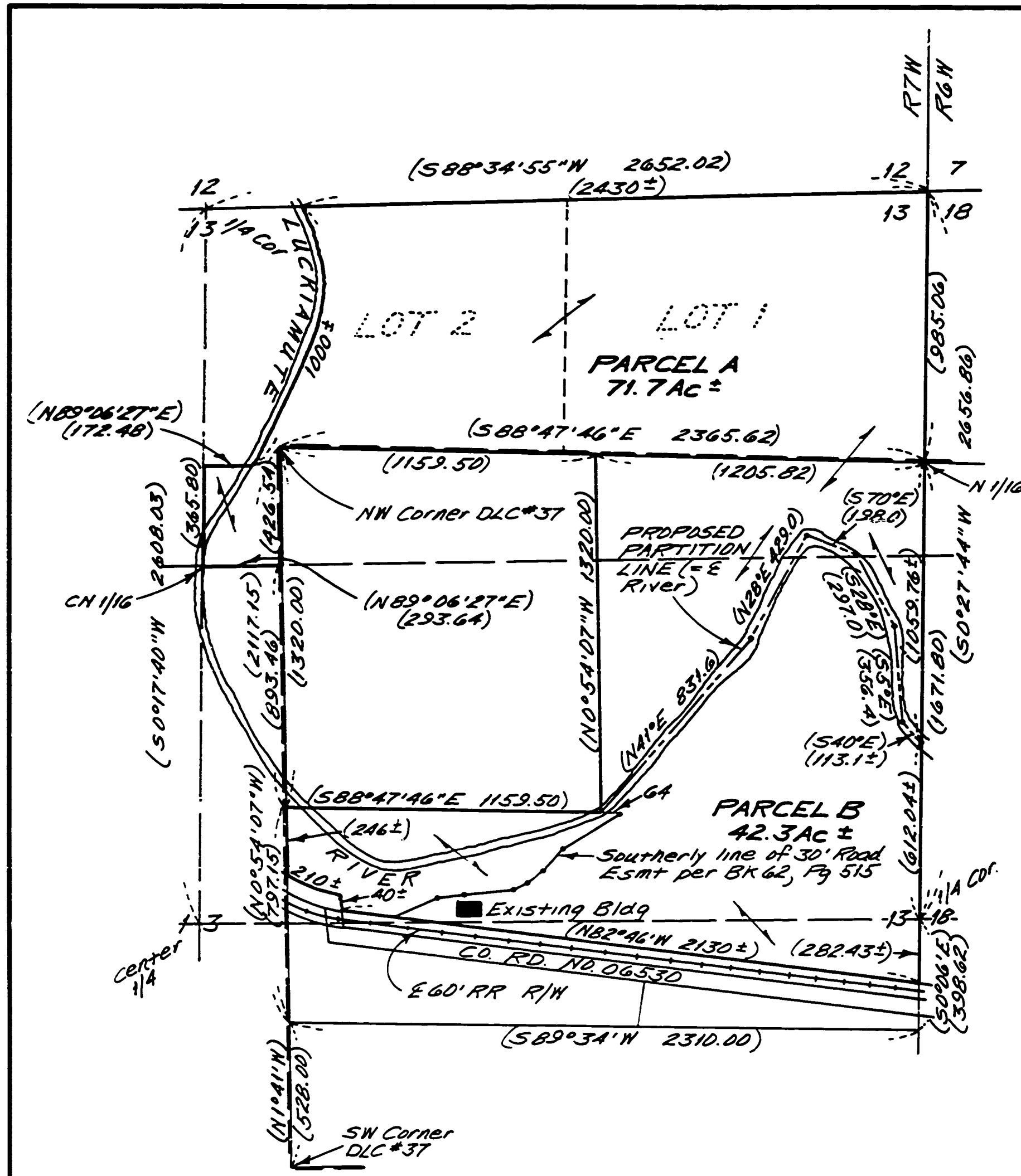


MLP DWG#56



NARRATIVE

This map represents the plan for MLP LD-BA-3. It was prepared using record data from CS 7397, CS 7392, Wilkes hard copy 10-647#3, the Road Survey of County Road No. 06530 and the deed. The river was located by scaling from the assessors plat and plotting the courses shown on Wilkes hard copy 10-647#3. No field surveying was done.

LEGEND

- Boundary of Parent Parcel.
- DLC line
- ().... Data taken or calculated from record

REGISTERED
PROFESSIONAL
LAND SURVEYOR
Theodore James Langton
OREGON
THEODORE JAMES LANGTON
1823

Northstar Surveying Inc.
402 NW 5th St.
Corvallis, Oregon, 97330
PH: 757-3050



MINOR LAND PARTITION APPROVED
Dana Spence 9/17/84
planning official date

MINOR LAND PARTITION PLAN
FOR ORA and VIORA MCRAE
in M. ROBBINS DLC NO. 37
in NE 1/4 SEC 13, T10S, R7W, W.M.
BENTON COUNTY, OREGON
AUGUST 15, 1984 SCALE: 1" = 400'