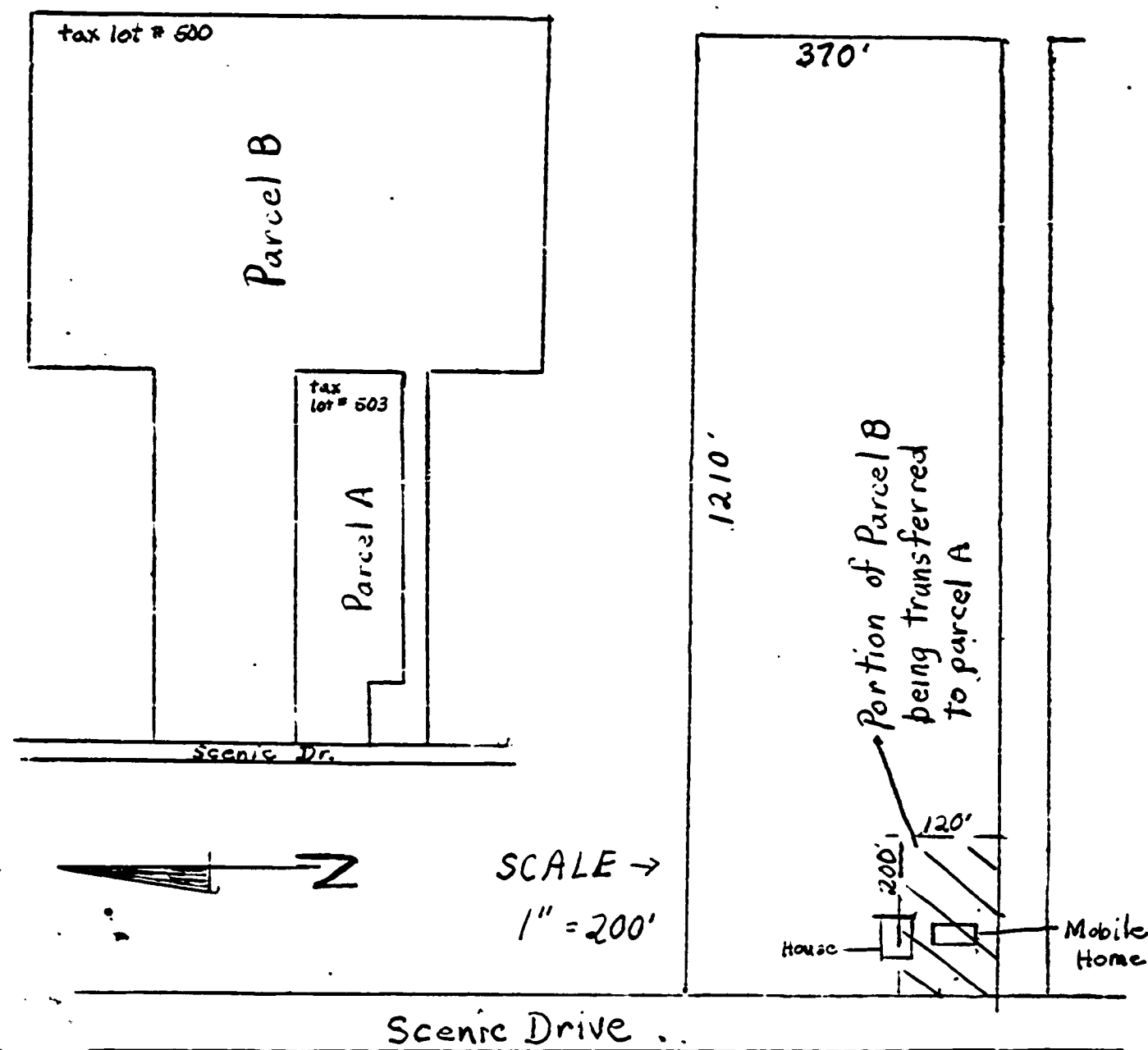


5-11-85

file # LD-84-38  
HLP#62

LOT LINE ADJUSTMENT  
FOR  
LUCILE B. HARMAN  
SECTION 23, T10S.R4W  
JOHN J. HASKINS DONATION LAND CLAIM NO. 71



MINOR LAND PARTITION APPROVED

*Dave Sem* 4/17/85  
PLANNING OFFICIAL DATE

