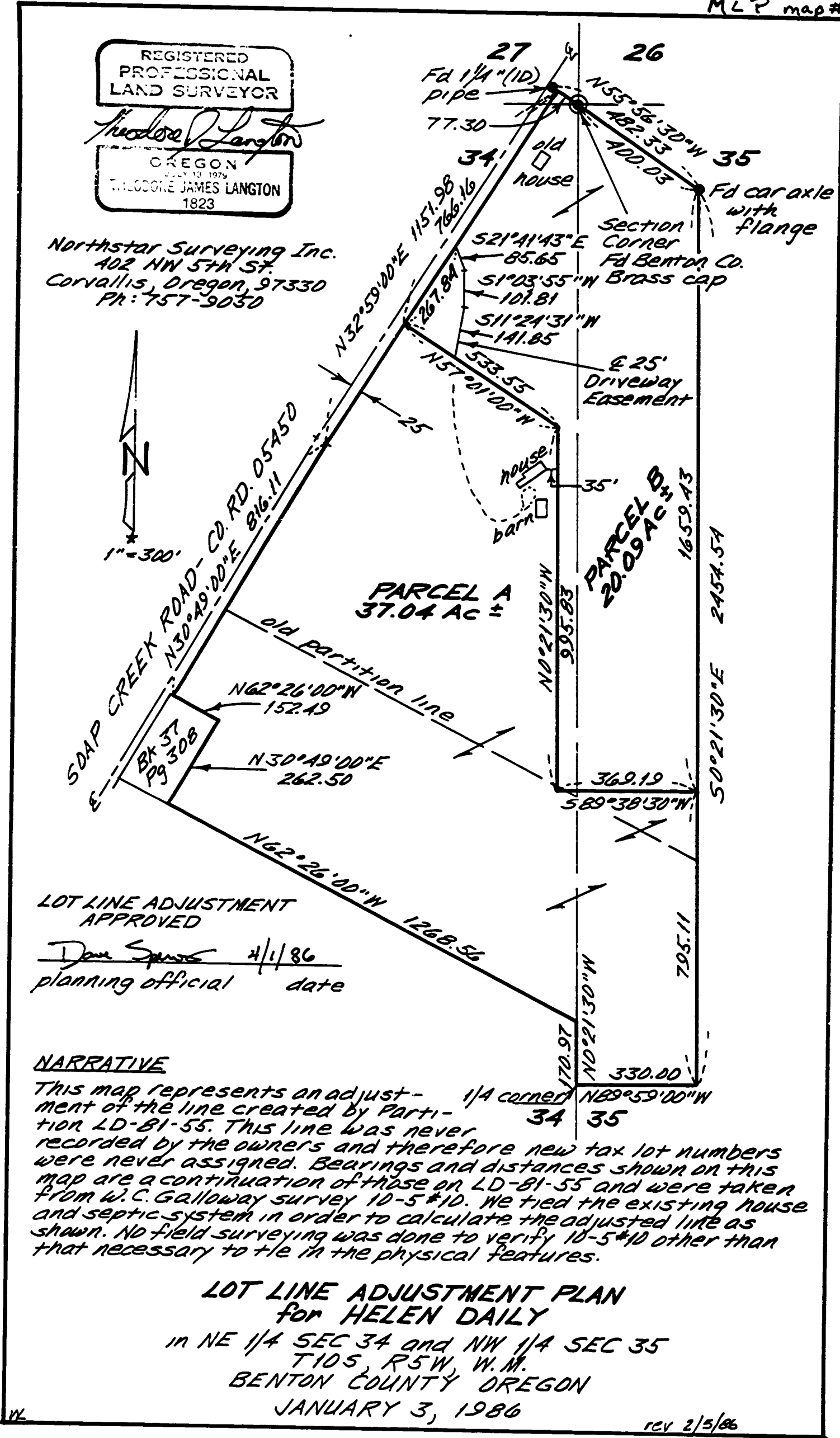


MLP map #71

REGISTERED  
PROFESSIONAL  
LAND SURVEYOR  
*Madison Langton*  
OREGON  
JULY 13 1979  
MADISON JAMES LANGTON  
1823

Northstar Surveying Inc.  
402 NW 5TH ST.  
Corvallis, Oregon, 97330  
PH: 757-9030



LOT LINE ADJUSTMENT  
APPROVED  
*Don Spang* 4/1/86  
planning official date

**NARRATIVE**  
This map represents an adjustment of the line created by Partition LD-81-55. This line was never recorded by the owners and therefore new tax lot numbers were never assigned. Bearings and distances shown on this map are a continuation of those on LD-81-55 and were taken from W.C. Galloway survey 10-5\*10. We tied the existing house and septic system in order to calculate the adjusted line as shown. No field surveying was done to verify 10-5\*10 other than that necessary to tie in the physical features.

**LOT LINE ADJUSTMENT PLAN**  
for HELEN DAILY  
in NE 1/4 SEC 34 and NW 1/4 SEC 35  
T10S, R5W, W.M.  
BENTON COUNTY OREGON  
JANUARY 3, 1986

rev 2/5/86