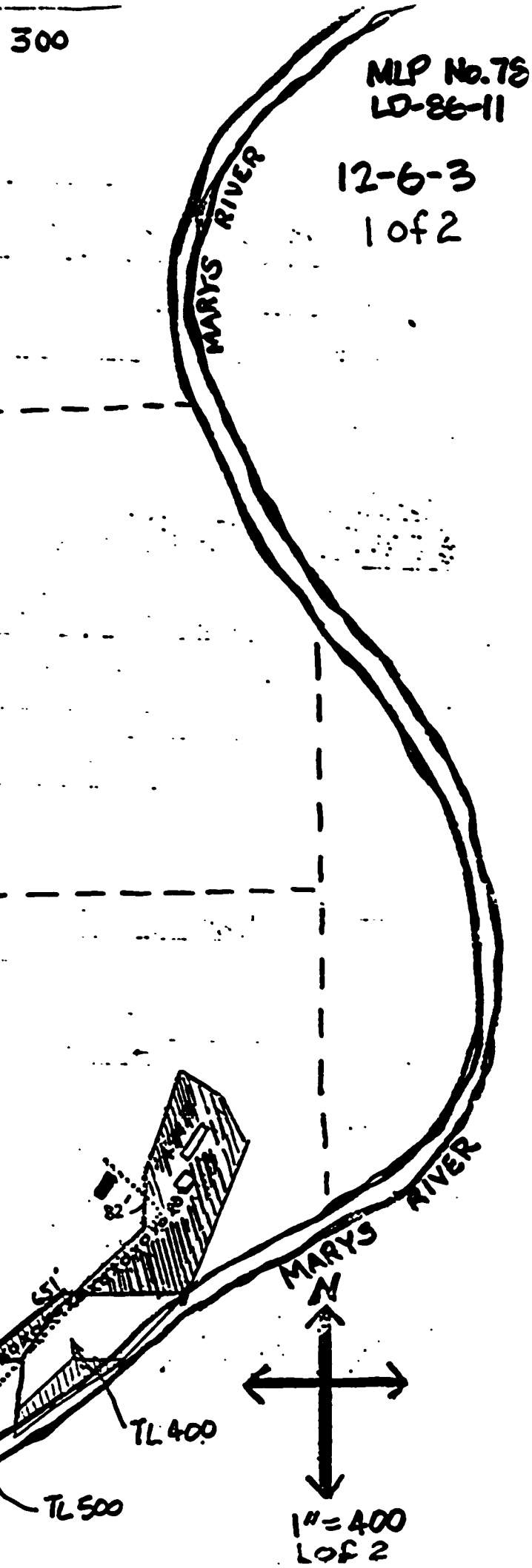


Mark A. Roliff 6/20/86  
Individual Responsible for Legal Description

Don Spence 1/20/87  
Dept. of Planning

..... Power Line  
--- Roadway Easement  
000 000



MLP No. 78  
LD-86-11

12-6-3  
1 of 2

T12S R6W S3

Boundary Drawing for  
Mark Roliff

Mark A. Roliff  
Person responsible for legal description

MINOR LAND DIVISION APPROVED

PLANNING OFFICIAL \_\_\_\_\_ DATE \_\_\_\_\_

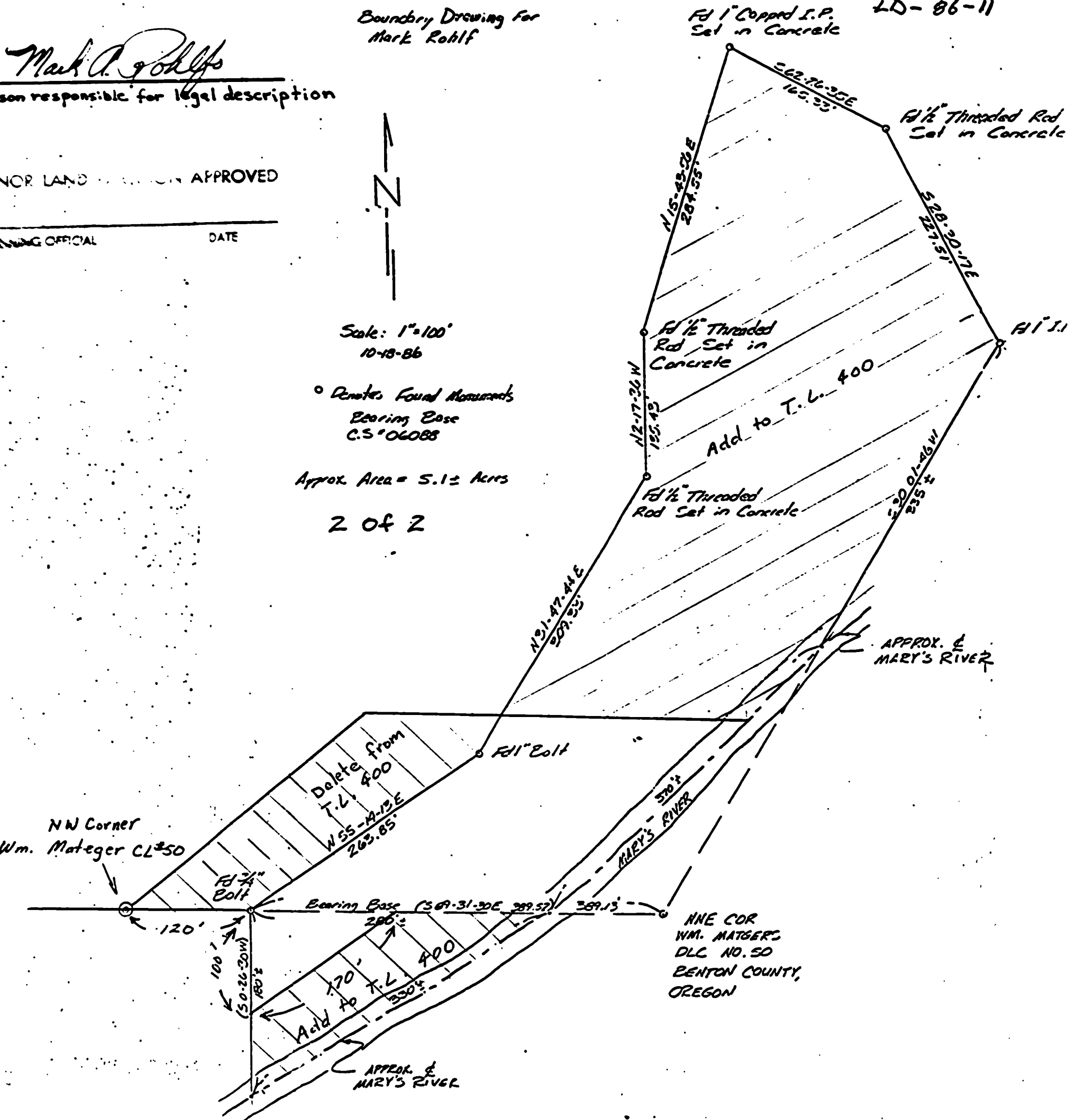
Scale: 1" = 100'  
10-18-86

• denotes Found Monuments  
Bearing Base  
CS° 06088

Approx. Area = 5.12 Acers

2 OF 2

MLP No. 78  
LD-86-11



1/2" Capped I.P.  
Set in Concrete

1/2" Threaded Rod  
Set in Concrete

1/2" Threaded  
Rod Set in  
Concrete

1/2" Threaded  
Rod Set in Concrete

NW Corner  
Wm. Mateger CL#50

NNE COR  
WM. MATSEGER  
DLC NO. 50  
BENTON COUNTY,  
OREGON

APPROX. &  
MARYS RIVER

APPROX. &  
MARYS RIVER