

MINOR LAND PARTITION (FILE NO. LD-86-40)

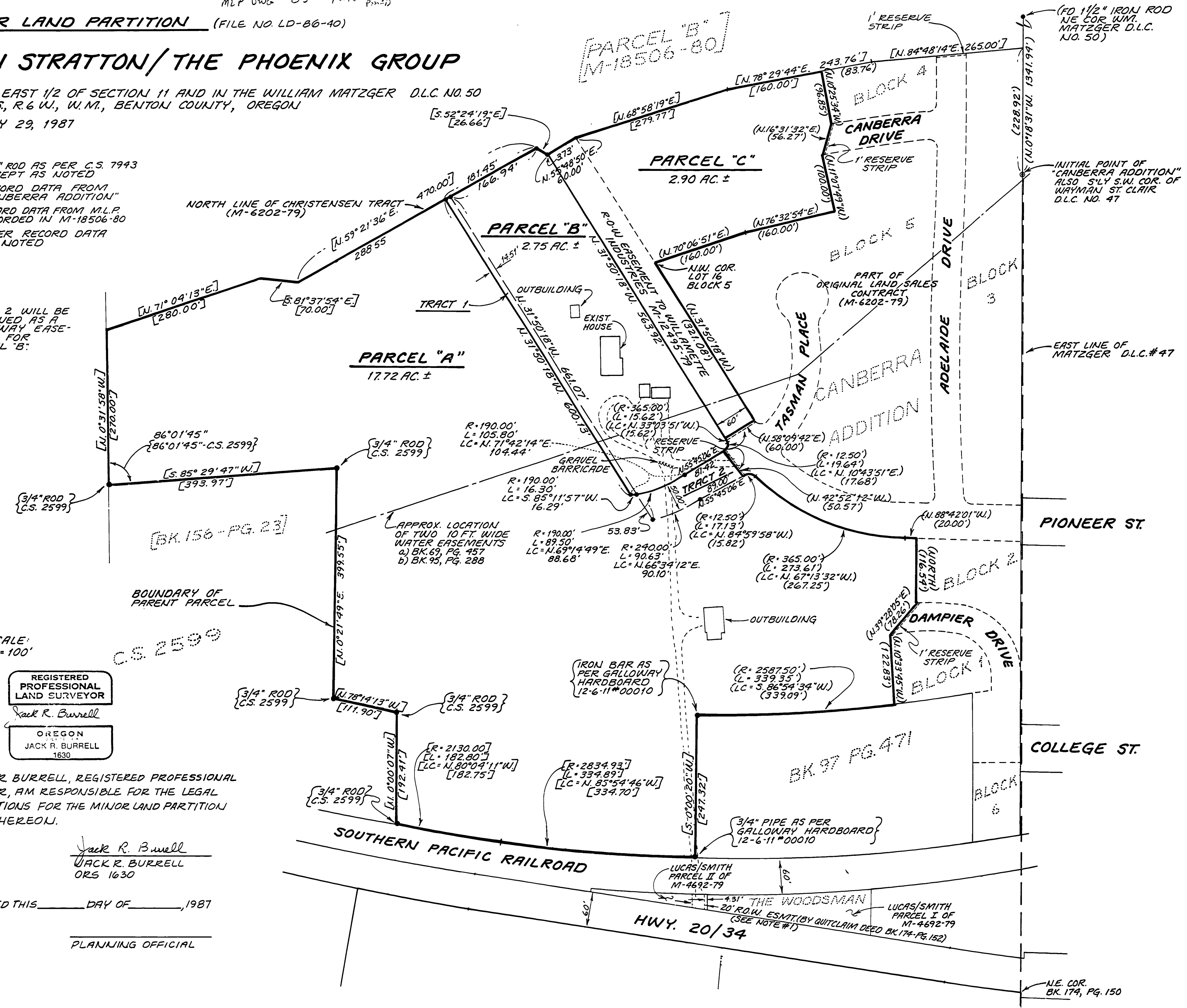
FOR LEON STRATTON / THE PHOENIX GROUP

IN THE EAST 1/2 OF SECTION 11 AND IN THE WILLIAM MATZGER D.L.C. NO. 50 IN T. 12 S., R. 6 W., W.M., BENTON COUNTY, OREGON JANUARY 29, 1987

- LEGEND**
- 5/8" ROD AS PER C.S. 7943 EXCEPT AS NOTED
  - ( ) RECORD DATA FROM "CANBERRA ADDITION"
  - [ ] RECORD DATA FROM M.L.P. RECORDED IN M-18506-80
  - { } OTHER RECORD DATA AS NOTED

**NOTE**

TRACT 2 WILL BE RESERVED AS A DRIVEWAY EASEMENT FOR PARCEL "B".



SCALE: 1" = 100'

REGISTERED PROFESSIONAL LAND SURVEYOR  
 Jack R. Burrell  
 OREGON  
 JACK R. BURRELL  
 1630

I, JACK R. BURRELL, REGISTERED PROFESSIONAL SURVEYOR, AM RESPONSIBLE FOR THE LEGAL DESCRIPTIONS FOR THE MINOR LAND PARTITION SHOWN HEREON.

Jack R. Burrell  
 JACK R. BURRELL  
 ORS 1630

APPROVED THIS \_\_\_\_\_ DAY OF \_\_\_\_\_, 1987

PLANNING OFFICIAL

**MINOR LAND PARTITION** (FILE NO. LD-86-40)

FOR  
**LEON STRATTON / THE PHOENIX GROUP**

IN THE EAST 1/2 OF SECTION 11 AND IN THE WILLIAM MATZGER D.L.C. NO. 50  
IN T. 12 S., R. 6 W., W.M., BENTON COUNTY, OREGON

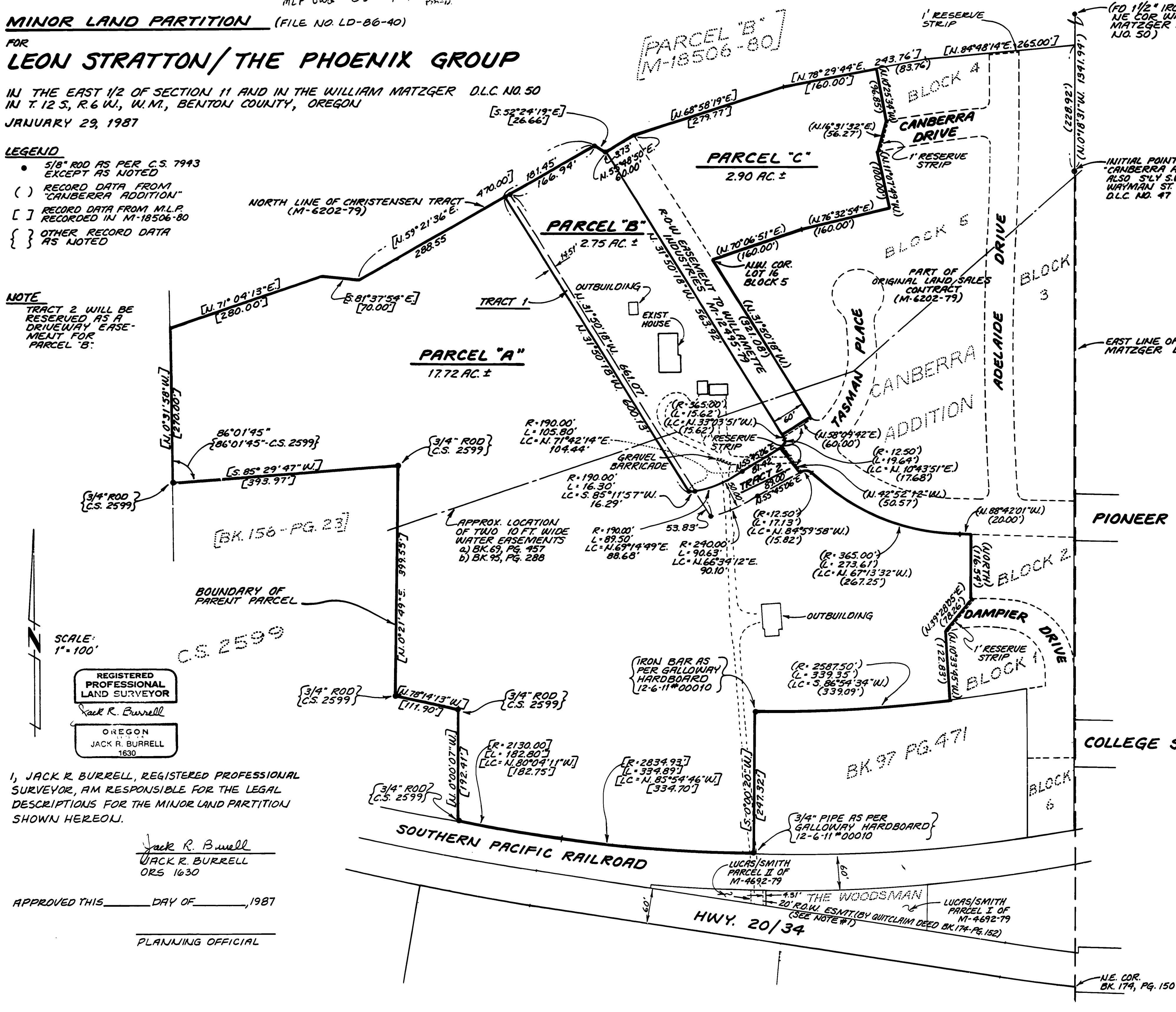
JANUARY 29, 1987

**LEGEND**

- 5/8" ROD AS PER C.S. 7943 EXCEPT AS NOTED
- ( ) RECORD DATA FROM "CANBERRA ADDITION"
- [ ] RECORD DATA FROM M.L.P. RECORDED IN M-18506-80
- { } OTHER RECORD DATA AS NOTED

**NOTE**

TRACT 2 WILL BE RESERVED AS A DRIVEWAY EASEMENT FOR PARCEL 'B'.



REGISTERED PROFESSIONAL LAND SURVEYOR  
 Jack R. Burrell  
 OREGON  
 JACK R. BURRELL  
 1630

I, JACK R. BURRELL, REGISTERED PROFESSIONAL SURVEYOR, AM RESPONSIBLE FOR THE LEGAL DESCRIPTIONS FOR THE MINOR LAND PARTITION SHOWN HEREON.

Jack R. Burrell  
 JACK R. BURRELL  
 ORS 1630

APPROVED THIS \_\_\_\_\_ DAY OF \_\_\_\_\_, 1987

PLANNING OFFICIAL

INITIAL POINT "CANBERRA ADDITION" ALSO S.W. COR. WAYMAN ST. C. D.L.C. NO. 47

EAST LINE OF MATZGER D.L.C. NO. 50

PIONEER DRIVE

COLLEGE STREET

N.E. COR. BK. 174, PG. 150