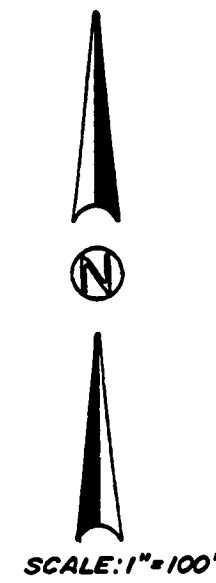


MLP # 87

MAP OF MINOR LAND PARTITION MLP-88-4
for:
TIMBERHILL REALTY & DEVELOPMENT, CO.
AUGUST 14, 1988

LOTS 3 & 4, TIMBERHILL PROFESSIONAL PARK
JAMES L. MULKEY, SR. D.L.C. No. 63
N.E. 1/4, SECTION 27, T.11 S., R.5 W., W.M.,
BENTON COUNTY, OREGON



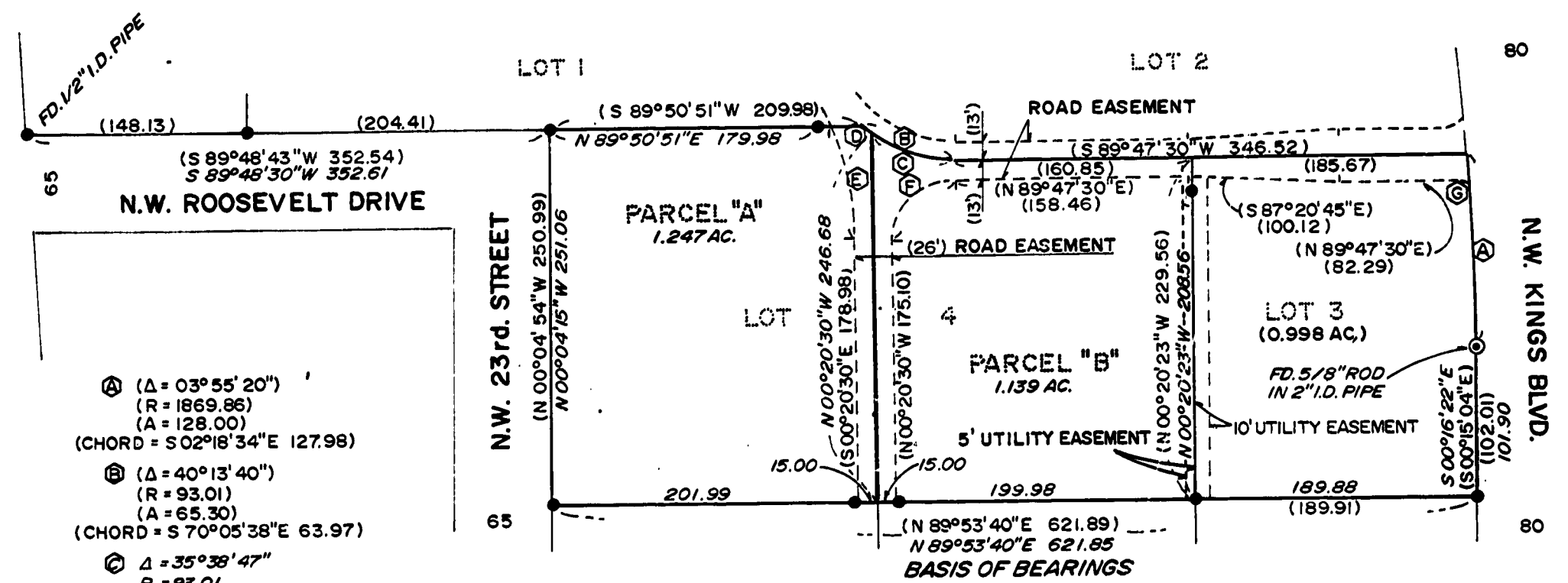
LEGEND

- FD. 5/8" IRON ROD, EXCEPT AS NOTED
- () RECORD DATA FROM PLAT OF "TIMBERHILL PROFESSIONAL PARK".
- I.D. INNER DIAMETER

FOR RECORD OF SURVEY SEE C.S. No. 8078

LEGAL DESCRIPTIONS

ON SEPARATE SHEET



- Ⓐ (Δ = 03°55'20")
(R = 1869.86)
(A = 128.00)
(CHORD = S 02°18'34"E 127.98)
- Ⓑ (Δ = 40°13'40")
(R = 93.01)
(A = 65.30)
(CHORD = S 70°05'38"E 63.97)
- Ⓒ Δ = 35°38'47"
R = 93.01
A = 57.87
CHORD = S 72°17'38"E 56.94
- Ⓓ Δ = 04°33'58"
R = 93.01
A = 7.41
CHORD = S 32°11'18"E 7.41
- Ⓔ (Δ = 30°14'53")
(R = 177.91)
(A = 93.92)
(CHORD = S 15°27'57"E 92.84)

- Ⓟ (Δ = 90°08'00")
(R = 41.01)
(A = 64.52)
(CHORD = S 44°43'30"W 58.07)
- Ⓠ (Δ = 20°23'18")
(R = 20.00)
(A = 7.12)
(CHORD = S 80°00'51"E 708)

REGISTERED
PROFESSIONAL
LAND SURVEYOR
Darryl W. Harms
OREGON
JULY 20, 1979
DARRYL W. HARMS
1079

DARRYL W. HARMS, P.L.S.
P.O. BOX 1051
CORVALLIS, OR. 97339
PHONE: (503) 758-5579

MINOR LAND PARTITION APPROVED

Jan Marshall 9-14-88
DEVELOPMENT SERVICES DIRECTOR DATE

Neil Mann 9-13-88
CITY ENGINEER DATE