

PLAN HOLD CORPORATION • IRVINE, CALIFORNIA
REORDER BY NUMBER 075AR
POSITION EDGE OF PRINT ON THIS LINE

PLAN HOLD CORPORATION • IRVINE, CALIFORNIA
REORDER BY NUMBER 075AR
POSITION EDGE OF PRINT ON THIS LINE

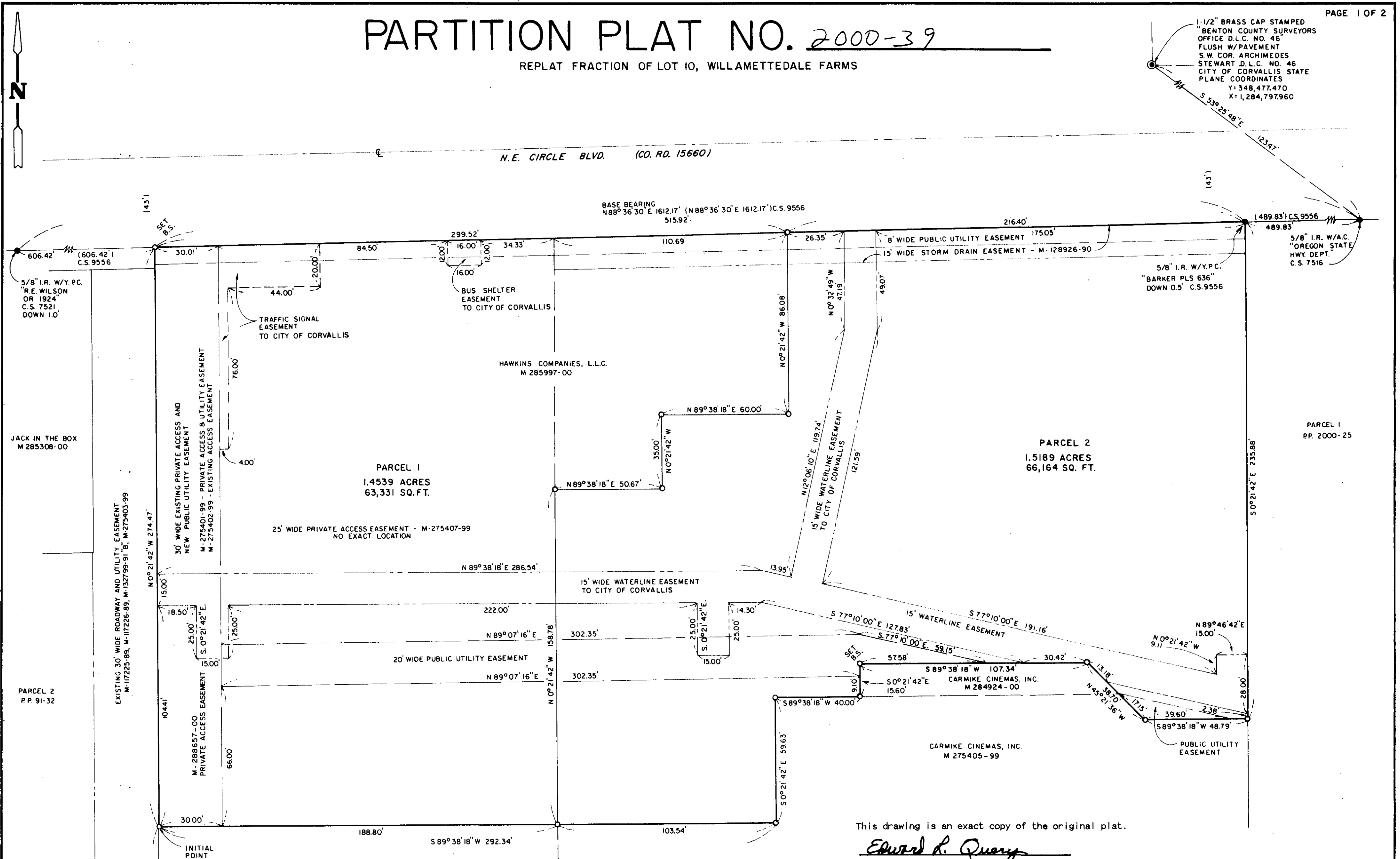
PLAN HOLD CORPORATION • IRVINE, CALIFORNIA
REORDER BY NUMBER 075AR
POSITION EDGE OF PRINT ON THIS LINE

PLAN HOLD CORPORATION • IRVINE, CALIFORNIA
REORDER BY NUMBER 075AR
POSITION EDGE OF PRINT ON THIS LINE

PARTITION PLAT NO. 2000-39

REPLAT FRACTION OF LOT 10, WILLAMETTEDALE FARMS

PAGE 1 OF 2



1-1/2" BRASS CAP STAMPED
BENTON COUNTY SURVEYORS
OFFICE D.L.C. NO. 46
FLUSH W/PAVEMENT
S.W. COR. ARCHIMEDES
STEWART D.L.C. NO. 46
CITY OF CORVALLIS STATE
PLANE COORDINATES
Y: 348,477.470
X: 1,284,797.960

This drawing is an exact copy of the original plat.
Edward L. Query

LEGEND

- I.R. = Iron Rod I.P. = Iron Pipe
- Y.P.C. = Yellow Plastic Cap
- A.C. = Aluminum Cap P.P. = Partition Plat
- C.S. = County Survey

REGISTERED PROFESSIONAL LAND SURVEYOR
Edward L. Query
OREGON
JULY 14, 1978
EDWARD L. QUERY
1853
EXPIRES 12-31-2000

SURVEY FOR HAWKINS COMPANIES LLC	
LOCATION: FRACTION OF LOT 10, WILLAMETTEDALE FARMS	
N.W. 1/4 SEC. 25 CITY OF CORVALLIS	
T 11 S R 5 W.W.M. BENTON COUNTY, OREGON	
SCALE: 1" = 30'	BARKER SURVEYING CO.
DATE: NOV. 15, 2000	2035 25TH STREET S.E. SALEM, OREGON 97302 PHONE (503) 588-8800
DRAWN BY: JM	● - MON. FOUND. ○ - MON. SET. (See Note) () RECORD DIST. & BEARING

EXPIRATION DATE: 12-31-2000

DRAWING NUMBER
2000-39
PLAN HOLD CORPORATION • IRVINE, CALIFORNIA
REORDER BY NUMBER 075AR
POSITION EDGE OF PRINT ON THIS LINE

DRAWING NUMBER
1 OF 2
PLAN HOLD CORPORATION • IRVINE, CALIFORNIA
REORDER BY NUMBER 075AR
POSITION EDGE OF PRINT ON THIS LINE

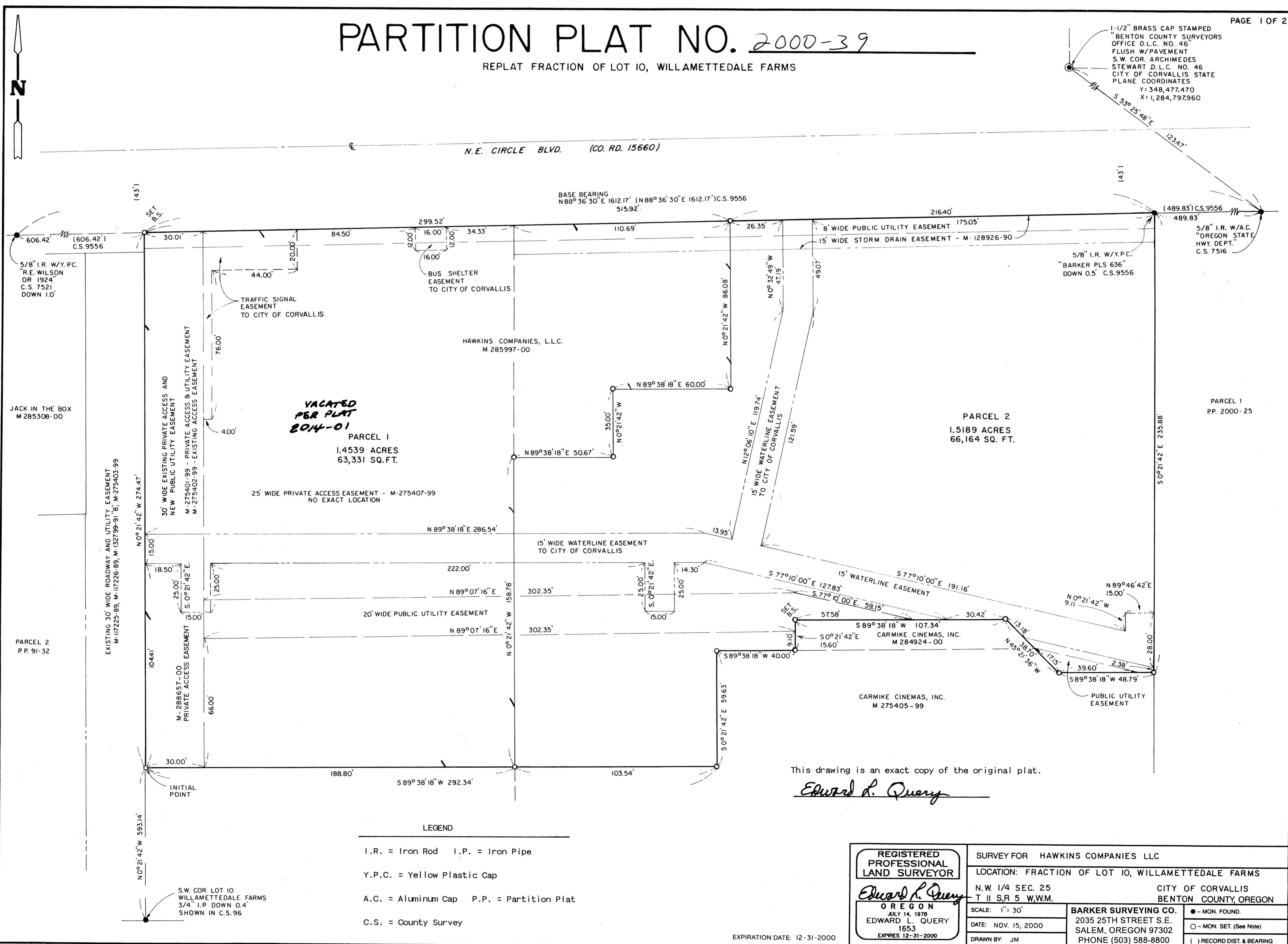
DRAWING NUMBER
1 OF 2
PLAN HOLD CORPORATION • IRVINE, CALIFORNIA
REORDER BY NUMBER 075AR
POSITION EDGE OF PRINT ON THIS LINE

DRAWING NUMBER
2000-39
PLAN HOLD CORPORATION • IRVINE, CALIFORNIA
REORDER BY NUMBER 075AR
POSITION EDGE OF PRINT ON THIS LINE

PARTITION PLAT NO. 2000-39

REPLAT FRACTION OF LOT 10, WILLAMETTEDALE FARMS

PAGE 1 OF 2



1-1/2" BRASS CAP STAMPED
BENTON COUNTY SURVEYORS
OFFICE D.L.C. NO. 46
FLUSH W/PAVEMENT
S.W. COR. ARCHIMEDES
STEWART D.L.C. NO. 46
CITY OF CORVALLIS STATE
PLANE COORDINATES
Y: 348,477.470
X: 1,284,797.960

**VACATED
PER PLAT
2014-01**

This drawing is an exact copy of the original plat.

Edward L. Query

LEGEND

- I.R. = Iron Rod I.P. = Iron Pipe
- Y.P.C. = Yellow Plastic Cap
- A.C. = Aluminum Cap P.P. = Partition Plat
- C.S. = County Survey

<p>REGISTERED PROFESSIONAL LAND SURVEYOR</p> <p><i>Edward L. Query</i></p> <p>OREGON</p> <p>JULY 14, 1978</p> <p>EDWARD L. QUERY</p> <p>1653</p> <p>EXPIRES 12-31-2000</p>	<p>SURVEY FOR HAWKINS COMPANIES LLC</p>	
	<p>LOCATION: FRACTION OF LOT 10, WILLAMETTEDALE FARMS</p>	
	<p>N.W. 1/4 SEC. 25 CITY OF CORVALLIS</p> <p>T II S R 5 W.W.M. BENTON COUNTY, OREGON</p>	
	<p>SCALE: 1" = 30'</p>	<p>DATE: NOV. 15, 2000</p>
<p>DRAWN BY: JM</p>	<p>EXPIRATION DATE: 12-31-2000</p>	<p>MON. FOUND.</p> <p>MON. SET. (See Note)</p> <p>RECORD DIST. & BEARING</p>