

DRAWING NUMBER  
**2002-33**

SAFCO PRODUCTS • NEW HOPE, MINNESOTA  
REORDER BY PART NUMBER 6552

DRAWING NUMBER

SAFCO PRODUCTS • NEW HOPE, MINNESOTA  
REORDER BY PART NUMBER 6552

DRAWING NUMBER

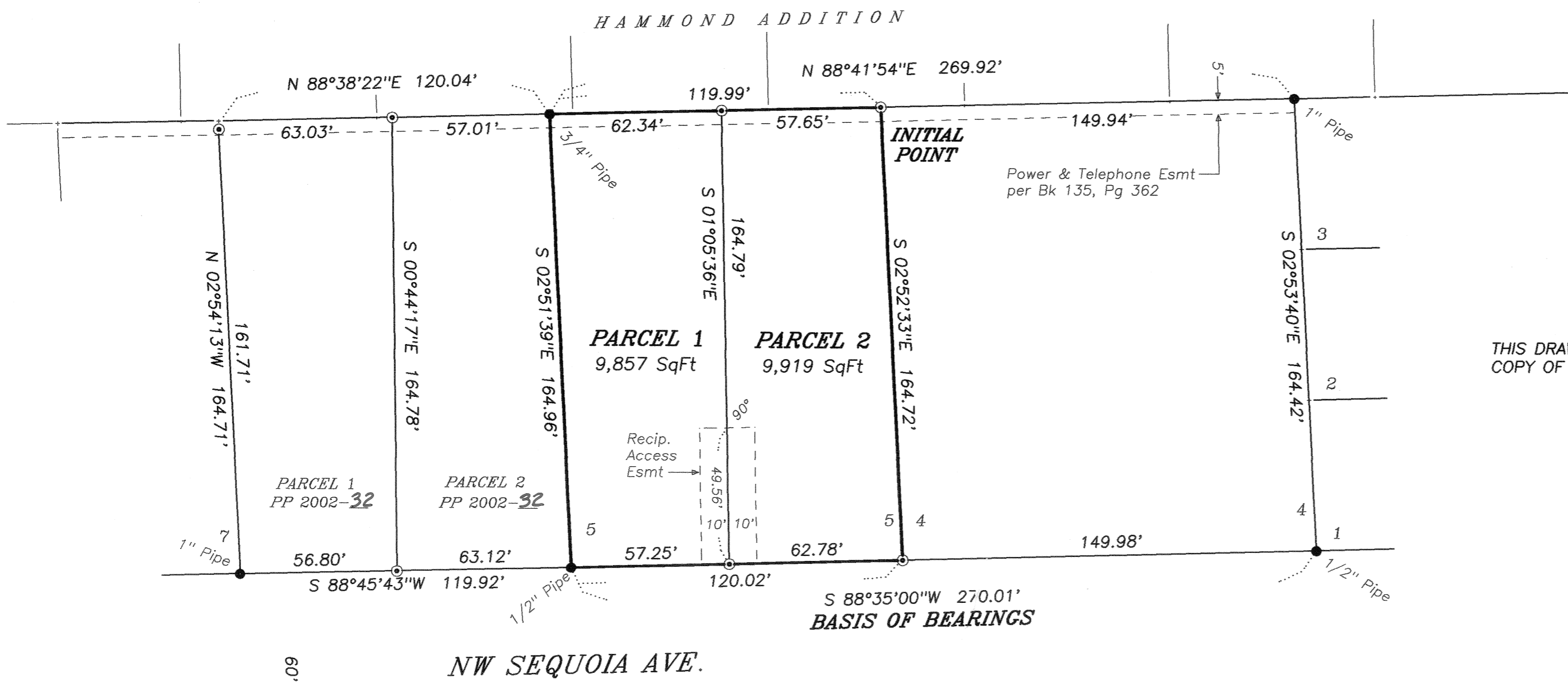
SAFCO PRODUCTS • NEW HOPE, MINNESOTA  
REORDER BY PART NUMBER 6552

DRAWING NUMBER  
**2002-33**

SAFCO PRODUCTS • NEW HOPE, MINNESOTA  
REORDER BY PART NUMBER 6552

2002 - 33

02121ROB/02121PP2/wll



THIS DRAWING IS AN EXACT COPY OF THE ORIGINAL PLAT.

PARTITION PLAT 2002-33

for  
**EARL L. ROBERTS & JUDY A. ROBERTS**

A REPLAT OF LOT 5, BLOCK 4  
HIGHLAND LAWN ACRES

in  
NE 1/4 SECTION 26  
T 11 S, R 5 W, W.M.  
CITY OF CORVALLIS  
BENTON COUNTY, OREGON

AUGUST 28, 2002

REGISTERED  
PROFESSIONAL  
LAND SURVEYOR

*Theodore J. Langton*  
OREGON  
JULY 13, 1979  
THEODORE JAMES LANGTON  
1823  
Renewal Date 12/31/2002

**NORTHSTAR SURVEYING, INC.**

720 N.W. 4th Street  
Corvallis, Oregon 97330  
Phone: 541-757-9050

**SURVEYOR'S CERTIFICATE**

I, Theodore J. Langton, a Registered Professional Land Surveyor in the State of Oregon, hereby declare that I have correctly surveyed and have found or set proper monuments at the corners of the land represented on this Partition Plat. The land is described as follows:

Lot 5, Block 4, HIGHLAND LAWN ACRES, in the City of Corvallis, Benton County, Oregon.

**DECLARATION**

Know all people by these presents that Earl L. Roberts and Judy A. Roberts are the recorded owners of the lands represented on this map and described in the accompanying surveyor's certificate, and have caused same to be partitioned and replatted into parcels as shown hereon.

We hereby create the Reciprocal Access Easements as shown hereon for the mutual benefit of Parcels 1 and 2.

*Earl L. Roberts* *Judy A. Roberts*  
Earl L. Roberts Judy A. Roberts

STATE OF OREGON )  
S.S.  
COUNTY OF BENTON )

Signed and attested before me on this 27th day of September, 2002, by Earl L. Roberts and Judy A. Roberts.

*Bobbie Artus*  
BOBBIE ARTUS

Notary Public - Oregon  
Commission No. A 521239  
My Commission Expires 03/02/2003  
MAR 02

**APPROVALS**

*Lee Maul* 10-1-02  
Corvallis Development Services Manager date  
*Ernie J. Bram* 10-3-2002  
Corvallis City Engineer date  
*Roy Wilson* 10-10-02  
Benton County Surveyor date

I hereby certify that pursuant to O.R.S. 92.095 all ad valorem taxes, fees and other charges required by law to be placed on the 2002-2003 tax roll, which became a lien or will become a lien during this tax year on this partition, but not yet certified to the tax collector for collection have been paid to me this 9th day of DECEMBER, 2002.

by *Craig Smith*  
Director, Benton County Dept. of Assessment

I hereby certify that all ad valorem taxes and other charges required by law to be placed upon the tax roll which have become a lien on this partition that are now due and payable have been paid to me this 9th day of December, 2002.

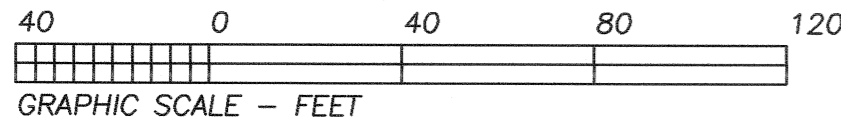
by *Velda Holseth*  
for Director, Benton County Dept. of Finance, Auditing & Tax Collection

STATE OF OREGON )  
S.S.  
COUNTY OF BENTON )

I hereby certify that the attached partition plat was received and duly recorded by me as Partition Plat 2002-33 in Benton County Records M-2002-330629 on this 14th day of December, 2002, at 10:03 o'clock AM.

by *Hukmin Whitney*  
Benton County Clerk

YN



**LEGEND**

- .....Found monument, as noted, by plat of HIGHLAND LAWN ACRES.
- ⊙.....Found monument: 5/8" x 30" rebar with red plastic cap stamped "NORTHSTAR PLS 1823," set per Partition Plat 2002-32.

NOTE: pipe dimension is inside diameter.

**NARRATIVE**

This survey is the result of City of Corvallis Community Development Department case No. MRPO2-00003. Lot 5, Block 4, HIGHLAND LAWN ACRES is hereby being replatted into 2 Parcels.

I replatted Lot 6 per Partition Plat 2002-32. As part of that plat I surveyed Lot 5 and set the division corners for this present plat. The projects are concurrent. The boundary data I show hereon is identical to that shown on PP 2002-32. Please see my Narrative for that survey for an explanation of my procedures.