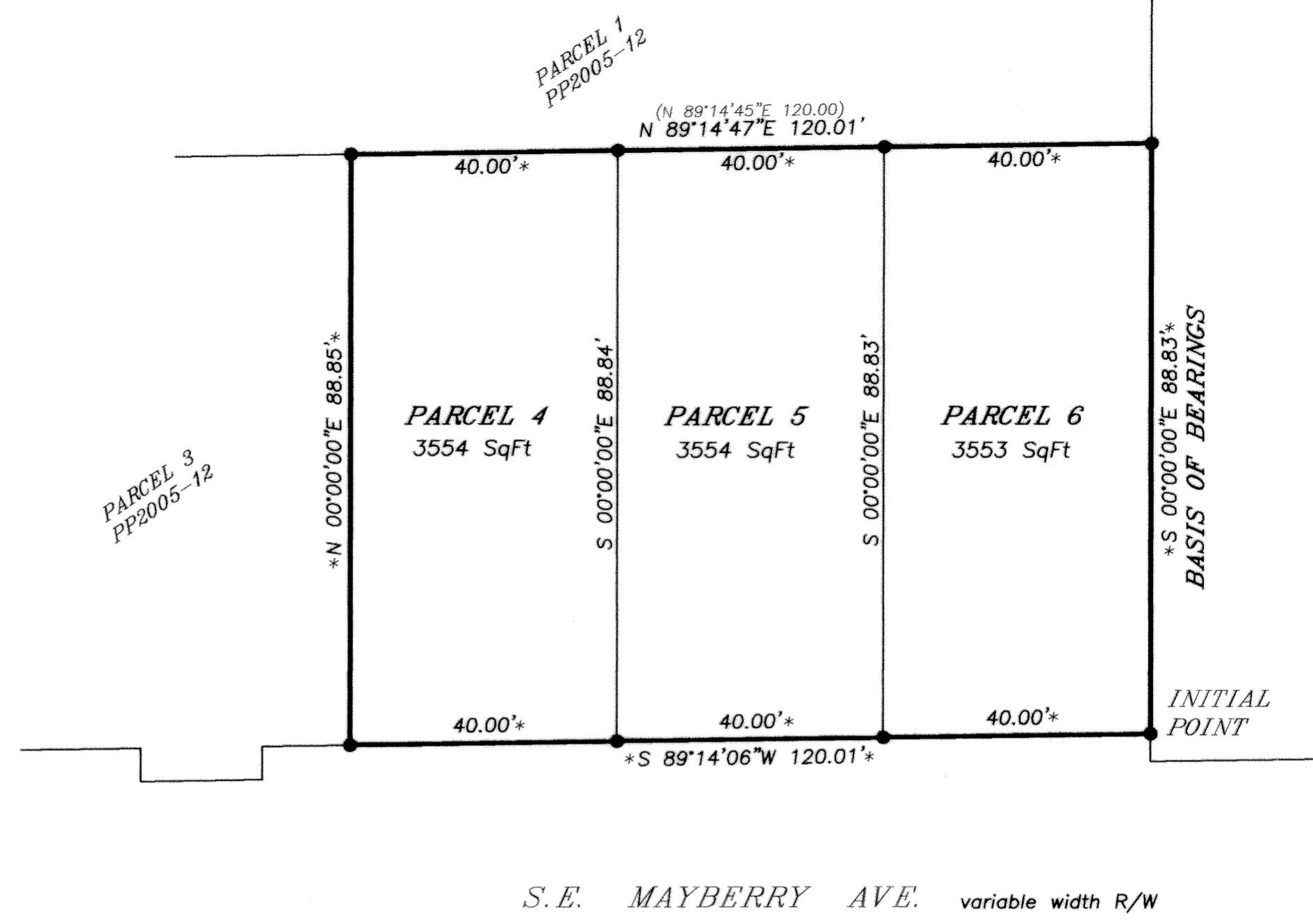
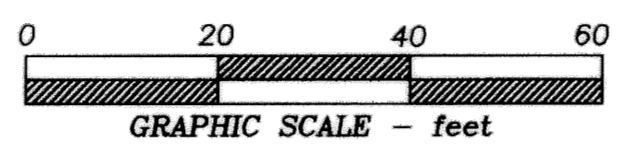


PARTITION PLAT 2006-47
 A REPLAT OF PARCEL 2,
 PARTITION PLAT 2005-12
 for
CRYSTAL CLEAR INVESTMENTS, LLC
 in
 NW 1/4 SECTION 11
 T 12 S, R 5 W, W.M.
 CITY OF CORVALLIS
 BENTON COUNTY, OREGON

AUGUST 14, 2006

LEGEND

-Found monument: 5/8" iron rod with red plastic cap, stamped "NORTHSTAR PLS 1823," as set per Partition Plat 2005-12.
- ().....Record data from Partition Plat 2005-12.
- *.....Data matches that from Partition Plat 2005-12.



NARRATIVE

This plat is the result of City of Corvallis Community Development Case "MLP06-00011." It represents the replatting of Parcel 2, Partition Plat 2005-12, dividing it into 3 new Parcels.
 I surveyed and platted Partition Plat 2005-12. As part of that survey I set the monuments that now represent the corners of the 3 new Parcels.

SURVEYOR'S CERTIFICATE

I, Theodore J. Langton, a registered professional land surveyor in the State of Oregon, hereby certify that I have correctly surveyed and found proper monuments at the corners of the land represented on this partition plat, the boundary of which is described as follows:

Parcel 2 of Partition Plat 2005-12, in the Northwest Quarter of Section 11, T 12 S, R 5 W, W.M., City of Corvallis, Benton County, Oregon.

DECLARATION

Know all men by these presents that Crystal Clear Investments, LLC, is the recorded owner of the land represented on the attached map, and more particularly described in the accompanying Surveyor's Certificate, and has caused same to be partitioned and surveyed into parcels as shown hereon.

Mel McConnell
 Mel McConnell
 Partner
 Crystal Clear Investments, LLC

State of Oregon)
) s.s.
 County of Benton)

Signed or attested before me on this 18th day of September, 2006, by Mel McConnell as a partner of Crystal Clear Investments, LLC.

Linda K. Vehrs Linda K. Vehrs
 Signature printed name

Notary public for Oregon
 Commission No. 387839
 My commission expires Dec. 19, 2008

APPROVALS

[Signature] 9/19/06
 Corvallis Development Services Manager date

for [Signature] 9/26/06
 Corvallis, City Engineer date

for [Signature] 9-29-06
 Benton County Surveyor date

I hereby certify that pursuant to O.R.S. 92.095 all ad valorem taxes, fees and other charges required by law to be placed on the 2006-2007 tax roll, which became a lien or will become a lien during this tax year on this partition, but not yet certified to the tax collector for collection have been paid to me this 27th day of September, 2006.

by [Signature]
 Director, Benton County Dept. of Assessment

I hereby certify that all ad valorem taxes and other charges required by law to be placed upon the tax roll which have become a lien on this partition that are now due and payable have been paid to me this 27th day of September, 2006.

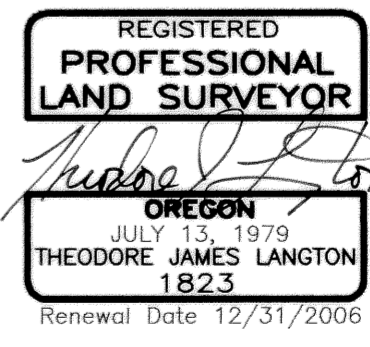
by [Signature]
 Director, Benton County Dept. of Finance,
 Auditing & Tax Collection

STATE OF OREGON)
) S.S.
 COUNTY OF BENTON)

I hereby certify that the attached partition plat was received and duly recorded by me as Partition Plat 2006-47 in Benton County Records as Document No. 2006-411047, on this 29th day of September, 2006, at 11:29 o'clock pm.

by [Signature]
 Benton County Clerk

This drawing is an exact copy of the original plat.



NORTHSTAR SURVEYING, INC.
 720 N.W. 4th Street
 Corvallis, Oregon 97330
 Phone: 541-757-9050