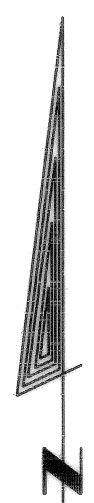


2007-041

PARTITION PLAT No. 2007-041

A REPLAT OF PARCEL 3  
PARTITION PLAT 2003-10  
for DOTY AND CORNWELL PROPERTIES L.L.C.  
IN THE WAYMAN ST. CLAIR D.L.C. NO. 47  
AND IN THE N.W. 1/4 OF THE N.W. 1/4  
SECTION 12, T12S., R.6W., W.M.  
CITY OF PHILOMATH  
BENTON COUNTY, OREGON

OCTOBER 15, 2007



NARRATIVE

The purpose of this survey is to survey and monument the property shown as per Notice of Planning Official Decision, File Number P07-13, dated 09/25/07. The control for this project is Partition Plat 2003-10. All monuments shown were held as control for this project. The position for the Northeast corner of Parcel 8 was determined using a distance-distance intersect from the reference monuments South and East. The position for the new monuments were set as per direction of the land owner dividing the duplex in half.

DECLARATION

Know all persons by these present that Teresa L. Cornwell and Douglas W. Doty are members of the Doty & Cornwell Properties L.L.C. the owner of record of the lands represented on this partition map and more particularly described in the surveyor's certificate and have caused the same to be surveyed and platted into parcels as shown on this plat.

Teresa L. Cornwell  
Teresa L. Cornwell (member)

Douglas W. Doty  
Douglas W. Doty (member)

ACKNOWLEDGMENT

STATE OF OREGON ) S.S.  
COUNTY OF BENTON )

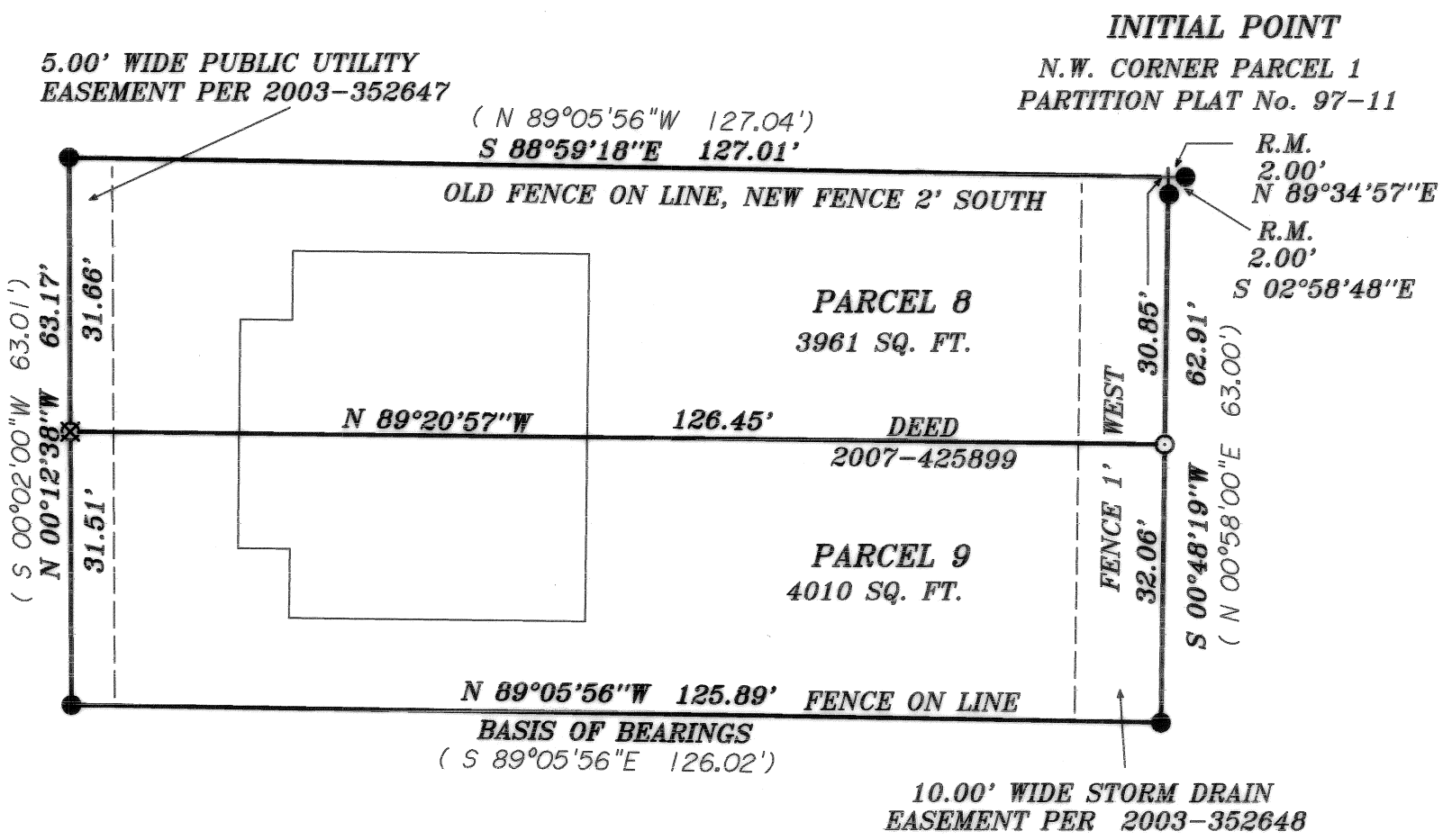
This is to certify that on this 12 day of November, 2007, before me, a Notary Public for the State of Oregon, in the County of Benton, did personally appear Teresa L. Cornwell and Douglas W. Doty members of Doty & Cornwell Properties L.L.C. described in, and who executed the above instrument, and acknowledged to me that they executed the same freely and voluntarily.

Karen L. Davis  
NOTARY SIGNATURE

COMMISSION NO. 380139

Karen L. Davis  
NOTARY PUBLIC (OREGON) print

MY COMMISSION EXPIRES 6-28-08



SURVEYOR'S CERTIFICATE

I, L.W. Hunnemuller, a Registered Land Surveyor in the State of Oregon hereby depose and say that I have correctly surveyed and marked with proper monuments the lands represented on the attached Partition Plat, that property described by Deed 2007-425899, the exterior boundary of which is described as follows:

Parcel 3 Partition Plat No. 2003-10

APPROVALS

City of Philomath File Number P07-13

Approved this 13 day of November, 2007

Ray Wilson  
City of Philomath Planning Official

Approved this 13<sup>th</sup> day of November, 2007

Ray Wilson  
Benton County Surveyor

TAXES

I hereby certify that all valorem taxes and other charges required by law to be placed upon the tax roll which have become a lien on this partition that are now due and payable have been paid to June 30, 2008.

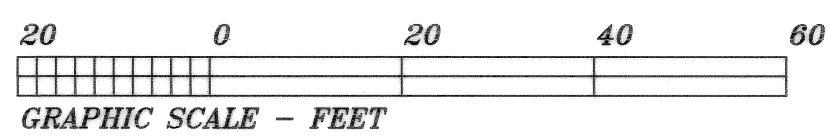
T. Fukuda  
Benton County Department Of Finance, Auditing, & Tax Collection

I hereby certify that pursuant to O.R.S. 92.095 all ad valorem taxes, fees and other charges required by law to be placed on the 2008 - 2009 tax roll, which became a lien or will become a lien during this tax year on this partition, but not yet certified to the tax collector for collection have been paid to me on this 12<sup>th</sup> day of November, 2007.

Jenny Anderson  
Director, Benton County Department of Assessment

LEGEND

- FOUND 5/8" REBAR WITH RED PLASTIC CAP STAMPED "NORTHSTAR PLS 1823"
- + COMPUTED POSITION CORNER FALLS IN 30" OAK TREE
- SET 5/8" X 30" REBAR WITH YELLOW PLASTIC CAP STAMPED "PLS 1050"
- ⊗ SET IN CONCRETE 1" BRASS DISK STAMPED "PLS 1050" WITH 1 1/2" STEM AND PLASTIC SLEEVE
- ( ) RECORD DATA PARTITION PLAT 2003-10



I HEREBY CERTIFY THIS TO BE A TRUE AN EXACT COPY OF THE ORIGINAL PLAT

RECORDING

STATE OF OREGON )  
COUNTY OF BENTON ) S.S.

I hereby certify that this Partition Plat was received and duly recorded by me as Partition Plat 2007-041 in the Benton County Deed Records as document number 2007-430128 on this 14<sup>th</sup> day of November, 2007 at 10:15 O'clock AM

By: Kathleen Korman  
For Benton County Clerk Senior Deputy Clerk

SURVEYED BY:  
L. W. HUNNEMULLER  
3055 N.E. LANCASTER  
CORVALLIS, OR 97330  
PHONE: (541) 757-7614

REGISTERED PROFESSIONAL LAND SURVEYOR

L. W. Hunnemuller  
OREGON  
AUGUST 22, 1975  
L. W. HUNNEMULLER  
1050  
Renewal Date 6/30/2009