

PARTITION PLAT No. 2011-004

FOR Gary G. Blake

APRIL 19, 2011

RE-PLAT OF PARCEL 8, PARTITION PLAT 2002-15 IN THE S.W. 1/4 OF SECTION 4, T.12 S., R.5 W., W.M., BENTON COUNTY, OREGON

SURVEYOR'S CERTIFICATE

I, Darryl W. Harms, a Registered Professional Land Surveyor in the State of Oregon, hereby certify that I correctly surveyed and platted into parcels the lands represented on the attached map, said lands being described as follows:

Parcel 8 of Partition Plat 2002-15, Partition Plat Records of Benton County, Oregon.

DECLARATION

Know all men by these presents that Gary G. Blake is the recorded owner of the lands represented on the attached map and more particularly described in the Surveyor's Certificate and has caused same to be surveyed and platted into parcels as shown on the annexed map, and hereby creates the reciprocal access and parking easement to Parcels 10 and 11, and private sewer line easement to Parcel 10.

Gary G. Blake (Signature)

ACKNOWLEDGEMENT

State of Oregon) County of Josephine) SS

This is to certify that on this 1st day of JUNE, 2011, before me, a Notary Public in and for said State and County, did personally appear Gary G. Blake who is known to me to be the identical individual described in and who executed the above instrument, and acknowledged to me that he executed the same freely and voluntarily.

LINDA A. ZUMWALT Notary Public-Oregon (printed)

Commission No. 444400

Linda A. Zumwalt (Signature) Notary Signature

My Commission Expires 1-30-2014

MRP10-00012 APPROVALS

ALL TAXES, FEES, ASSESSMENTS AND OTHER CHARGES AS PROVIDED BY ORS 92.095 HAVE BEEN PAID THROUGH JUNE 30, 2011

By: Jani Woodman 06-13-11 Director, Benton County Department of Assessment Date

By: Josh Shallow for 06-13-11 Director, Benton County Department of Finance, Auditing and Tax Collection Date

Examined and Approved this 7th day of June, 2011

By: Kevin Young Corvallis Planning Division Manager

Examined and Approved this 9th day of June, 2011

By: Eugene J. Brown, P.E. Corvallis City Engineer

Examined and Approved this 14th day of June, 2011

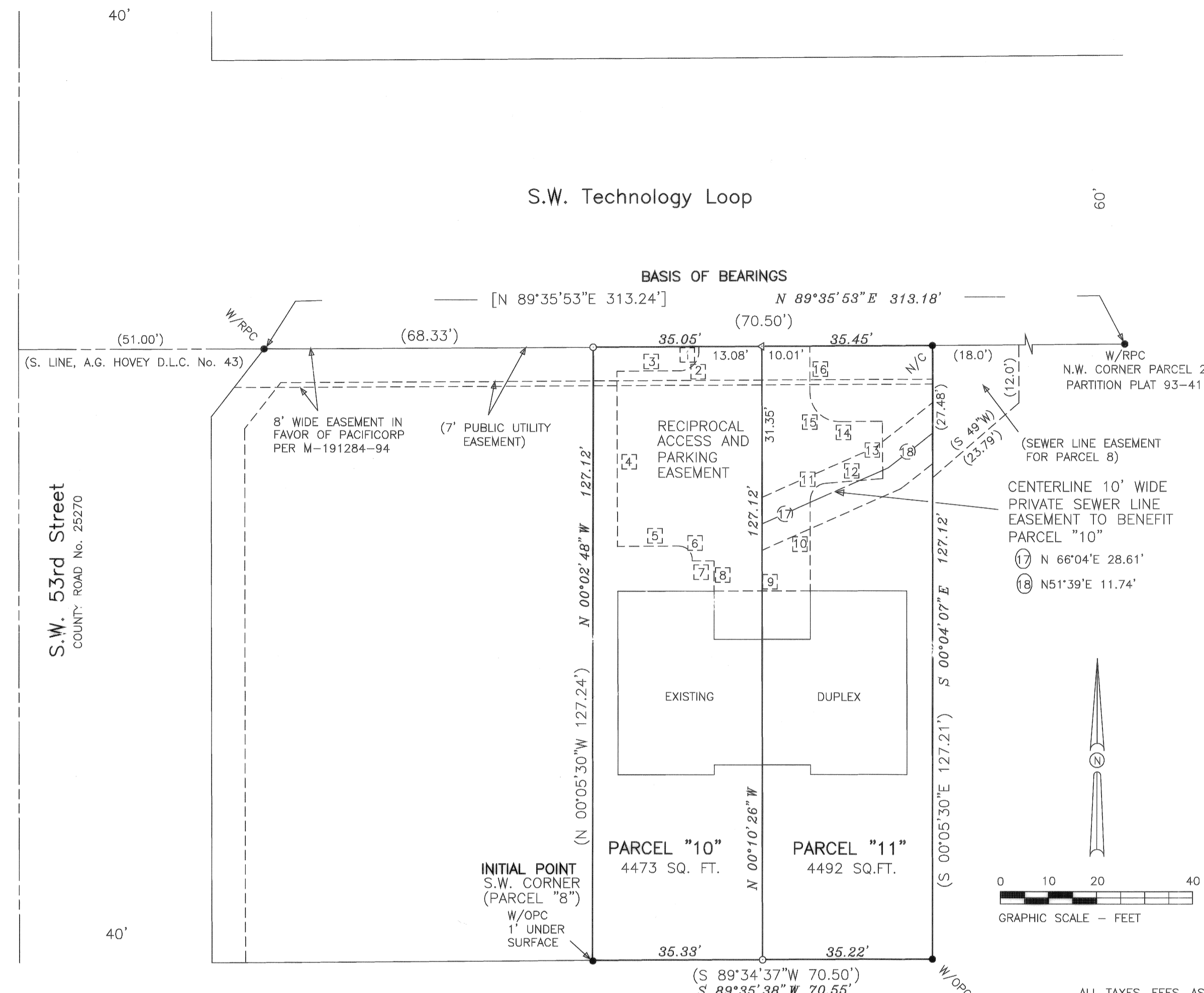
By: Darryl W. Harms Benton County Surveyor

RECORDING

STATE OF OREGON) COUNTY OF BENTON) S.S.

I HEREBY CERTIFY THAT THIS PARTITION PLAT WAS RECEIVED AND DULY RECORDED BY ME AS PARTITION PLAT 2011-004 IN BENTON COUNTY DEED RECORDS, AS DOCUMENT No. 2011-47940 ON THIS 14 DAY OF JUNE, 2011 AT 1:39 O'CLOCK P.M.

By: [Signature] BENTON COUNTY CLERK



Legend

- MONUMENT FOUND, TYPE & SOURCE NOTED
W/RPC 5/8" IRON ROD WITH RED PLASTIC CAP STAMPED "DARRYL HARMS, PLS 1079" AS PER PARTITION PLAT 1993-41
W/OPC 5/8" IRON ROD WITH ORANGE PLASTIC CAP STAMPED "DARRYL HARMS, PLS 1079" AS PER PARTITION PLAT 2002-15
N/C 5/8" IRON ROD WITH NO CAP PROTRUDING 6" ABOVE GROUND, IN ROOT OF LARGE TREE
o SET 5/8" X 30" STEEL REBAR WITH BLUE PLASTIC CAP STAMPED "DARRYL HARMS, PLS 1079"
< SET 2" MAGNAIL WITH 1-1/2" ALUMINUM WASHER STAMPED "D.W. HARMS, PLS 1079"
() RECORD DATA FROM PARTITION PLAT 2002-15
[] RECORD DATA FROM PARTITION PLAT 93-41

RECIPROCAL ACCESS AND PARKING EASEMENT

- 1 SOUTH 1.02'
2 DELTA = 89°33' R = 4.00' ARC = 6.25' CH. = S 44°46'30"W 5.64'
3 S 89°33'W 13.06'
4 S 00°18'E 36.33'
5 N 89°36'E 12.90'
6 DELTA = 95°01' R = 2.72' ARC = 4.51' CH. = S 40°38'45"E 4.01'
7 N 89°45'E 4.56'
8 S 00°10'26"E 6.28'
9 N 89°49'34"E 20.00'
10 N 00°13'W 18.77'
11 DELTA = 85°24' R = 3.50' ARC = 5.22' CH. = N 42°29'E 4.75'
12 N 85°11'E 11.90'
13 N 00°32'W 11.91'
14 S 89°33'W 9.00'
15 DELTA = 90°27' R = 6.00' ARC = 9.47' CH. = N 45°13'30"W 8.52'
16 NORTH 9.66'

THIS IS AN EXACT COPY OF THE ORIGINAL PARTITION PLAT

NARRATIVE

This partition plat is pursuant to a condition of Corvallis Community Development File No. MRP10-00012 and is a re-plat of Parcel 8 of Partition Plat 2002-15. Found monuments were held in position with the N.W. corner being replaced at record distance (68.33') from the West end of the Basis of Bearings line.

REGISTERED PROFESSIONAL LAND SURVEYOR

Darryl W. Harms (Signature) OREGON JULY 30, 1976 DARRYL W. HARMS 1079 RENEWAL DATE 6/30/11

DARRYL W. HARMS, P.L.S. P.O. BOX 1051 CORVALLIS, OR 97339 PHONE: (541) 745-3948 E-MAIL darrylharms@proaxis.com

