

MRP12-00005
PARTITION PLAT 2013-001

for
THE ESTATE of BETTY J. GUSTAFSON

SEPTEMBER 24, 2012

REPLAT OF LOT 8
IN BLOCK 8, WILKINS ADDITION TO CORVALLIS,
N.W. 1/4, SECTION 34, T11S., R5W. W.M.,
CITY OF CORVALLIS, BENTON COUNTY, OREGON

SURVEYOR'S CERTIFICATE

I, Darryl W. Harms, a registered Professional Land Surveyor in the State of Oregon, hereby certify that I have correctly surveyed and set proper monuments marking the corners of the lands represented on this Partition Plat. The lands being described as follows:

Lot 8, Block 8, Wilkins' Addition to Corvallis in the Southeast Quarter of Section 34, Township 11 South, Range 5 West, Willamette Meridian, City of Corvallis, Benton County, Oregon.

DECLARATION

Know all persons by these presents that Barry Lee Gustafson and Rhonda Gustafson McJunkin, Co-Trustees of Trust A and Trust C under Will of Betty J. Gustafson dated February 27, 1986, the recorded owner of the land represented on this Partition Plat, and more particularly described in the Surveyor's Certificate, have caused same to be surveyed and platted into Parcels as shown hereon.

We hereby create the seven foot wide utility easement shown hereon for franchise utilities.

We hereby grant to the City of Corvallis easement E3 which is 7.5 feet of a 15 foot wide easement centered on a existing combined storm/sewer pipeline.

Barry Lee Gustafson
Barry Lee Gustafson

Rhonda Gustafson McJunkin
Rhonda Gustafson McJunkin

ACKNOWLEDGEMENT

State of Oregon) S.S.
County of Benton)

This is to certify that on this 16 day of November, 2012, before me, a Notary Public for the State of Oregon, in the County of Benton, did personally appear Barry Lee Gustafson and Rhonda Gustafson McJunkin, Co-Trustees of Trust A and Trust C under will of Betty J. Gustafson dated February 27, 1986, who are known to me to be the identical individuals who executed the above instrument and acknowledged to me that they executed the same freely and voluntarily.

[Signature]
Notary Signature
Gerard P. Groessl
Notary Public-Oregon (printed)

Commission No. 439724
My Commission Expires 6/28/13

APPROVALS

All Taxes, Fees, Assessments and other charges as provided by ORS 92.095 have been paid through June 30, 2013.

City of Corvallis Case MRP12-00005

By: *Sara Smith* 1-10-2013
Director, Benton County Department of Assessment Date

Heim Young 1-7-13
Corvallis Planning Division Manager Date

By: *Tom Kidd* 1-11-13
Director, Benton County Department of Finance, Auditing & Tax Collection Date

Greg A. Meul 01-02-13
Corvallis City Engineer Date

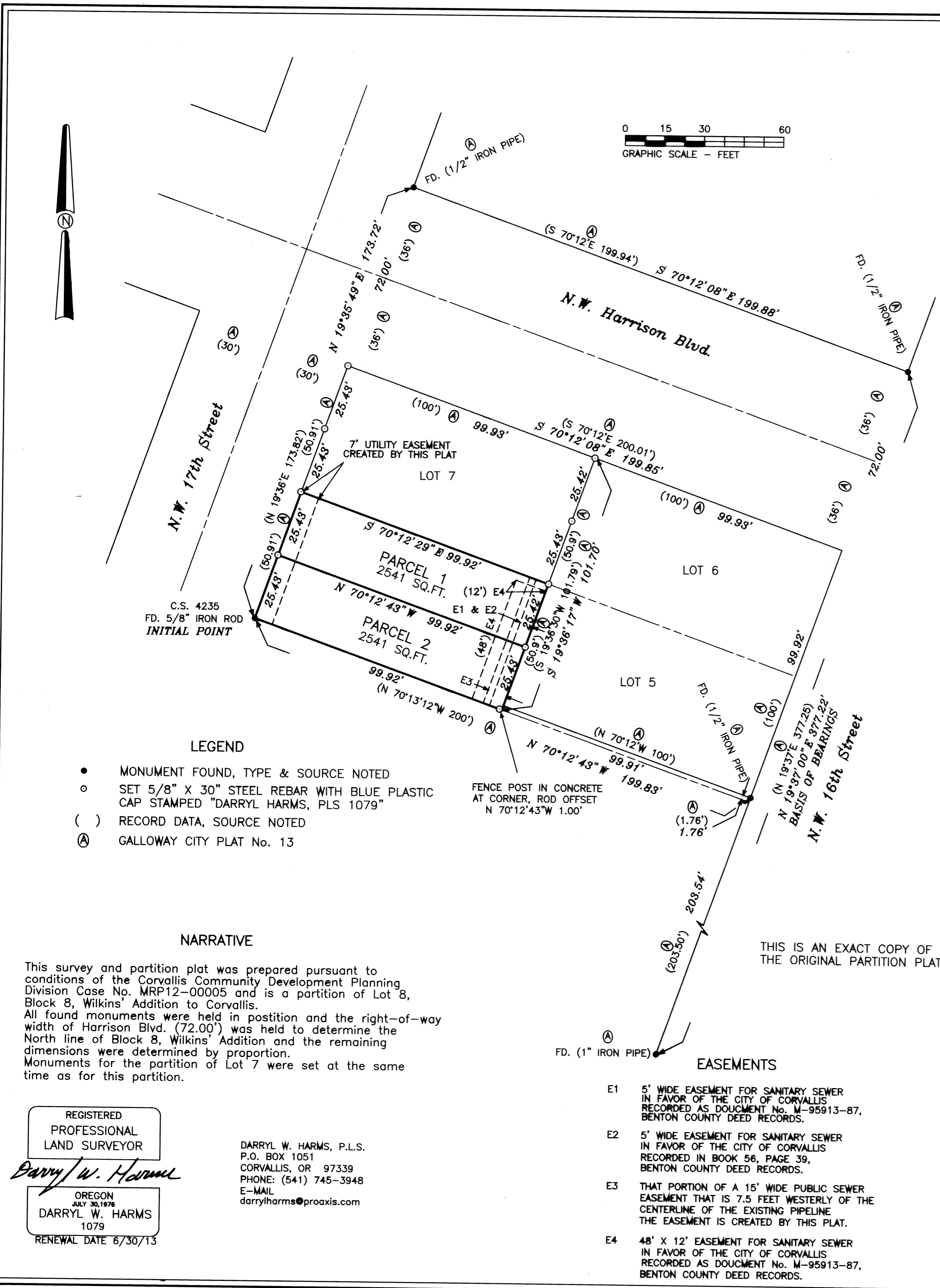
Joe Maudin 1-14-13
Benton County Surveyor Date

State of Oregon) S.S.
County of Benton)

RECORDING

I hereby certify that the attached partition plat was received and duly recorded by me as Partition Plat 2013-001 in the Benton County Records Document No. 2013-501830, on this 14 day of JANUARY, 2013, at 11:31 O'clock AM.

By: *[Signature]*
Benton County Clerk



LEGEND

- MONUMENT FOUND, TYPE & SOURCE NOTED
- SET 5/8" X 30" STEEL REBAR WITH BLUE PLASTIC CAP STAMPED "DARRYL HARMS, PLS 1079"
- () RECORD DATA, SOURCE NOTED
- Ⓐ GALLOWAY CITY PLAT No. 13

NARRATIVE

This survey and partition plat was prepared pursuant to conditions of the Corvallis Community Development Planning Division Case No. MRP12-00005 and is a partition of Lot 8, Block 8, Wilkins' Addition to Corvallis. All found monuments were held in position and the right-of-way width of Harrison Blvd. (72.00') was held to determine the North line of Block 8, Wilkins' Addition and the remaining dimensions were determined by proportion. Monuments for the partition of Lot 7 were set at the same time as for this partition.

THIS IS AN EXACT COPY OF THE ORIGINAL PARTITION PLAT

EASEMENTS

- E1 5' WIDE EASEMENT FOR SANITARY SEWER IN FAVOR OF THE CITY OF CORVALLIS RECORDED AS DOCUMENT No. W-95913-87, BENTON COUNTY DEED RECORDS.
- E2 5' WIDE EASEMENT FOR SANITARY SEWER IN FAVOR OF THE CITY OF CORVALLIS RECORDED IN BOOK 56, PAGE 39, BENTON COUNTY DEED RECORDS.
- E3 THAT PORTION OF A 15' WIDE PUBLIC SEWER EASEMENT THAT IS 7.5 FEET WESTERLY OF THE CENTERLINE OF THE EXISTING PIPELINE THE EASEMENT IS CREATED BY THIS PLAT.
- E4 48' X 12' EASEMENT FOR SANITARY SEWER IN FAVOR OF THE CITY OF CORVALLIS RECORDED AS DOCUMENT No. W-95913-87, BENTON COUNTY DEED RECORDS.

REGISTERED PROFESSIONAL LAND SURVEYOR
Darryl W. Harms
OREGON JULY 30, 1978
DARRYL W. HARMS 1079
RENEWAL DATE 6/30/13

DARRYL W. HARMS, P.L.S.
P.O. BOX 1051
CORVALLIS, OR 97339
PHONE: (541) 745-3948
E-MAIL darrylharms@proaxis.com