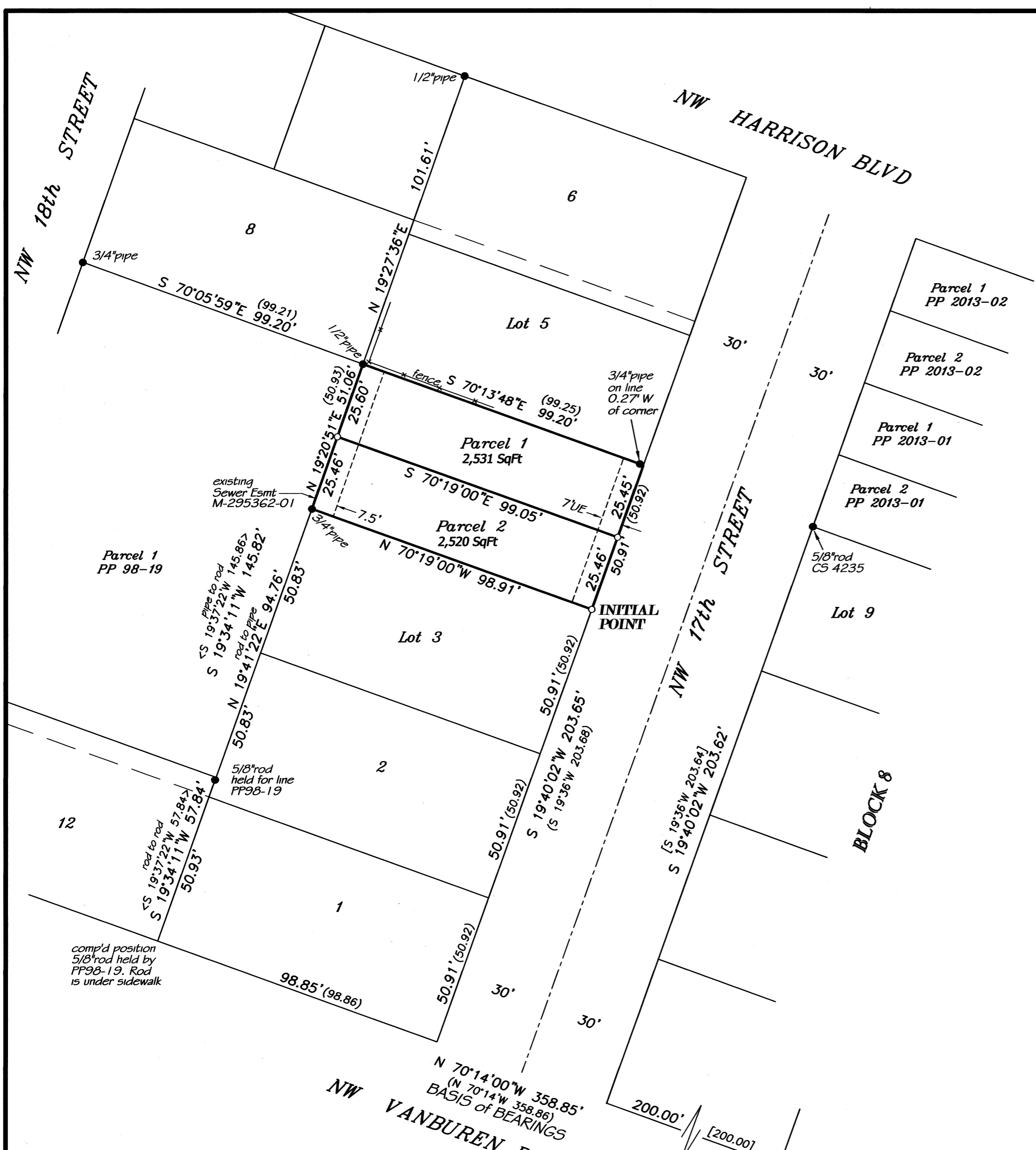
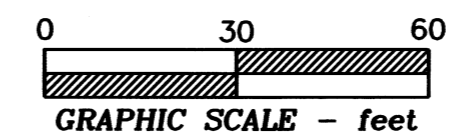


PARTITION PLAT 2014-005  
A REPLAT OF LOT 4, BLOCK 7  
WILKINS ADDITION  
for  
**SHERALYN LEAVITT**  
in  
NE QUARTER of SECTION 34  
T 11 S, R 5 W, W.M.  
CITY of CORVALLIS  
BENTON COUNTY, OREGON

JANUARY 22, 2014



**NARRATIVE**

This plat is the result of the City of Corvallis Community Development Planning Division Case MRP 13-00005. It effects the replatting of Lot 4 to create 2 Parcels.

W.C. Galloway surveyed portions of Wilkin's Addition per City Plat #00013. He found or set monuments at 3 of the 4 corners of Lot 4. Darryl Harms found the pipe at the NW Lot corner but not the one at the SW corner. Mr. Harms also found 5/8" rods of unknown origin and held them, with the pipe, as defining the east line of Lots 9-12. He held the southerly rod as being the SE corner of Lot 12 on the northerly right-of-way line of VanBuren Blvd. That southerly rod is now under a sidewalk, so I computed the position holding Mr. Harms' distance (57.84 ft) from the other rod on a projection of the line from the pipe at the NW corner of Lot 4. I held this computed position, together with the pipe at the SE corner of Block 8, as defining the northerly R/W line of VanBuren Blvd. I then computed the SW corner of Block 8 on the R/W at 200.00 feet from the pipe at the SE Block corner, as Fred Lemke did per CS 4235. I held that computed SW corner of Block 8, together with Mr. Lemke's rod at the NW corner of Lot 9, as defining the easterly R/W line of 17th St. I computed the westerly R/W line of 17th St. parallel to and 60.00 feet from that easterly R/W line and intersected it with the line between Mr. Galloway's pipes on the north line of Lot 4, Block 7, to compute the NE Lot corner. I intersected the westerly R/W line with the northerly R/W line of VanBuren Blvd to compute the SE corner of Block 7, then computed the SE corner of Lot 4 by proportionate measure between the NE corner of Lot 4 and the SE corner of the Block.

**LEGEND**

- .....Found survey monument by Galloway City Plat #13 unless otherwise noted.
- .....Set monument - 5/8"x 30" rebar with red plastic cap stamped "NORTHSTAR SURVEYING"
- ( ).....Record data from Galloway City Plat #13
- [ ]..... " " " CS 4235
- < >..... " " " Partition Plat 1998-19
- UE.....Utilities Easement

NOTE: pipe dimension is inside diameter

**SURVEYOR'S CERTIFICATE**

I, William L. Lauer, a registered Professional Land Surveyor in the State of Oregon, do hereby say that I have correctly surveyed and found or set proper monuments at or as witness corners to the true corners of the land represented on this Partition Plat. The land is described as follows:

Lot 4, Block 7, Wilkins' Addition, in the City of Corvallis, Benton County, Oregon.

**APPROVALS** MRP13-00005

*Kevin Young* 2-5-2014  
Corvallis Planning Division Manager date  
*Greg A. Baker* 02-10-14  
Corvallis City Engineer date  
*Jim Mandis* 2-13-14  
Benton County Surveyor date

All Taxes, Fees, Assessments and other charges as provided by ORS 92.095, have been paid through June 30<sup>th</sup>, 2014.

by *Jami Woodward* 2-13-14  
Director, Benton County Dept. of Assessment date  
by *Tom Jurjad* 02-13-14  
Director, Benton County Department of Finance, Auditing & Tax Collection date

**DECLARATION**

Know all persons by these presents that Sheralyn Leavitt is the recorded owner of the land represented on this Partition Plat, and more particularly described in the accompanying Surveyor's Certificate, and has caused same to be surveyed and platted into Parcels as shown hereon.

I hereby create the Utilities Easement (UE) as shown hereon for franchise utilities.

*Sheralyn Leavitt*  
Sheralyn Leavitt

STATE OF OREGON )  
COUNTY OF BENTON ) S.S.

Signed and attested before me on this 5<sup>th</sup> day of February, 2014, by Sheralyn Leavitt.

*Nicole Davis* signature of Notary

Nicole Davis printed name

Notary Public - State of Oregon  
Commission No. 451277 (451277)  
My Commission Expires Aug 10<sup>th</sup> 2014

I hereby certify that this drawing is an exact copy of the original plat.

REGISTERED PROFESSIONAL LAND SURVEYOR

*W. Lauer*  
OREGON  
JULY 21, 1992  
W. L. LAUER  
2558

RENEWS 12/31/2014

**NORTHSTAR SURVEYING, INC.**  
720 N.W. 4th Street  
Corvallis, Oregon 97330  
Phone: 541-757-9050