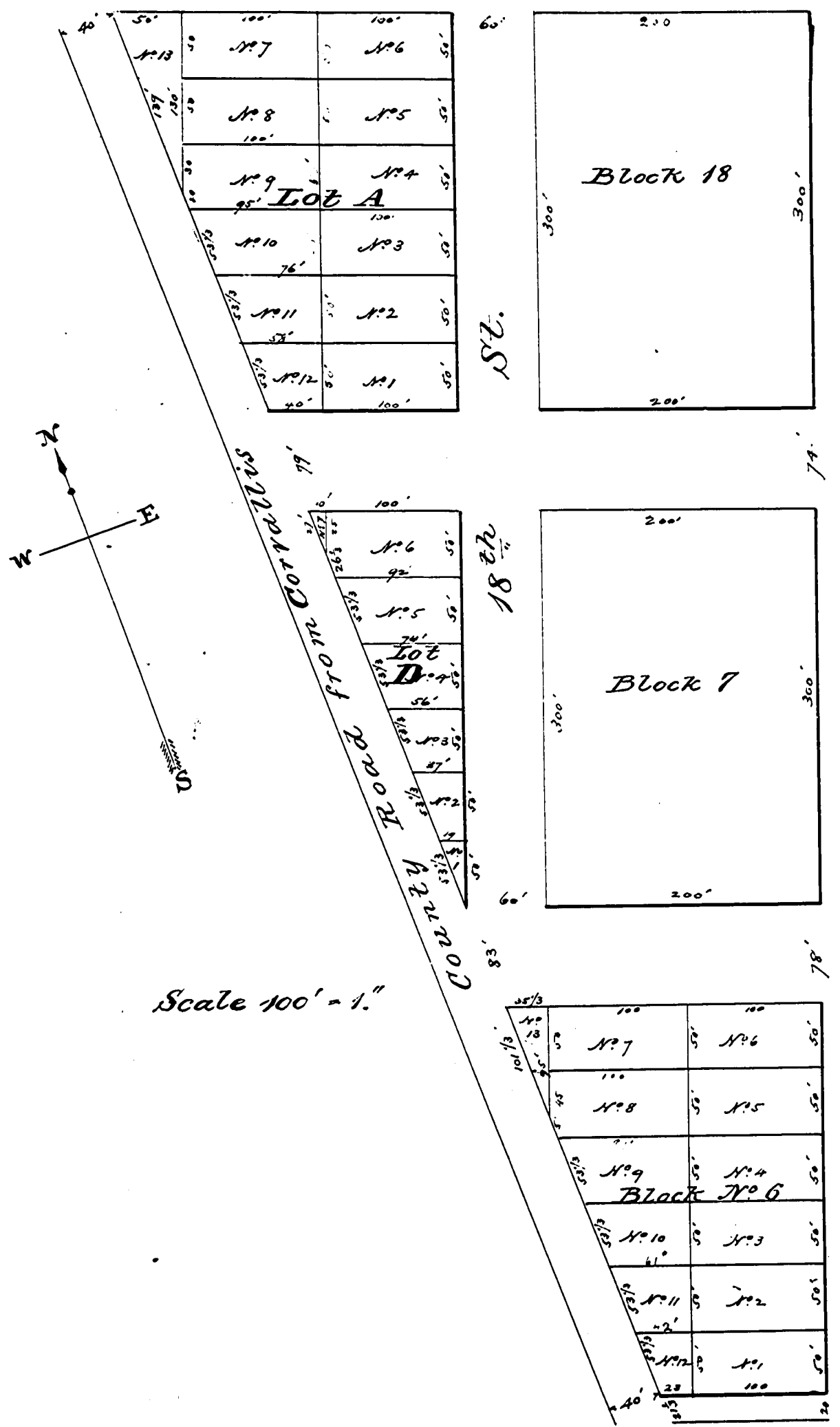


Supplemental Plat to Wilkins Addition to Corvallis

Benton County, Oregon.

— Correction —



This Plat is filed to supply the omission of Lot D and to correct an error in the size of the lots as platted in Lot A and Block 6 in Wilkins Addition to Corvallis, Benton County, Oregon, which was filed May 4th 1888, and recorded on page 57 of Book No. 2 of Towns Records of Benton County, Oregon. The only change from the original plat is in the size of the lots in said Block 6 & Lot A, and in inserting Lot D—the size of all the lots in said Block 6 and in Lots A and B to be as shown in this Supplemental Plat.

In the Presence of
 B. W. Wilson
 Henry Dunstan }

M. W. Wilkins.

State of Oregon }
 County of Benton } S. J. Before me personally appeared the above named M. W. Wilkins known to me to be the person who executed the foregoing Supplemental Plat to Wilkins Addition to Corvallis, and acknowledged to me that he executed the same as and for the purposes therein set forth. Witness my hand and Official seal this 10th day of February 1890

B. W. Wilson
 County Clerk of Benton
 County, Oregon.

Received for Record Feb. 10th 1890
 and Recorded.

B. W. Wilson Co. Clerk

I certify that I have compared the foregoing plat and dedication or writing, with the Original record of the same, re-copied by me from pages 104 of Book No. 2 of records of Towns, Benton County records, in compliance with an act of the Legislative Assembly of the State of Oregon, filed Feb. 18, 1897 (see pages 61 and 62, Session Laws of Oregon for 1897.) that it is a true and correct transcript therefrom, and of the whole thereof and that I am the legal custodian of the same, this 1 day of July 1892

B. W. Wilson
 County Clerk.
By J. Wilson
 Deputy.