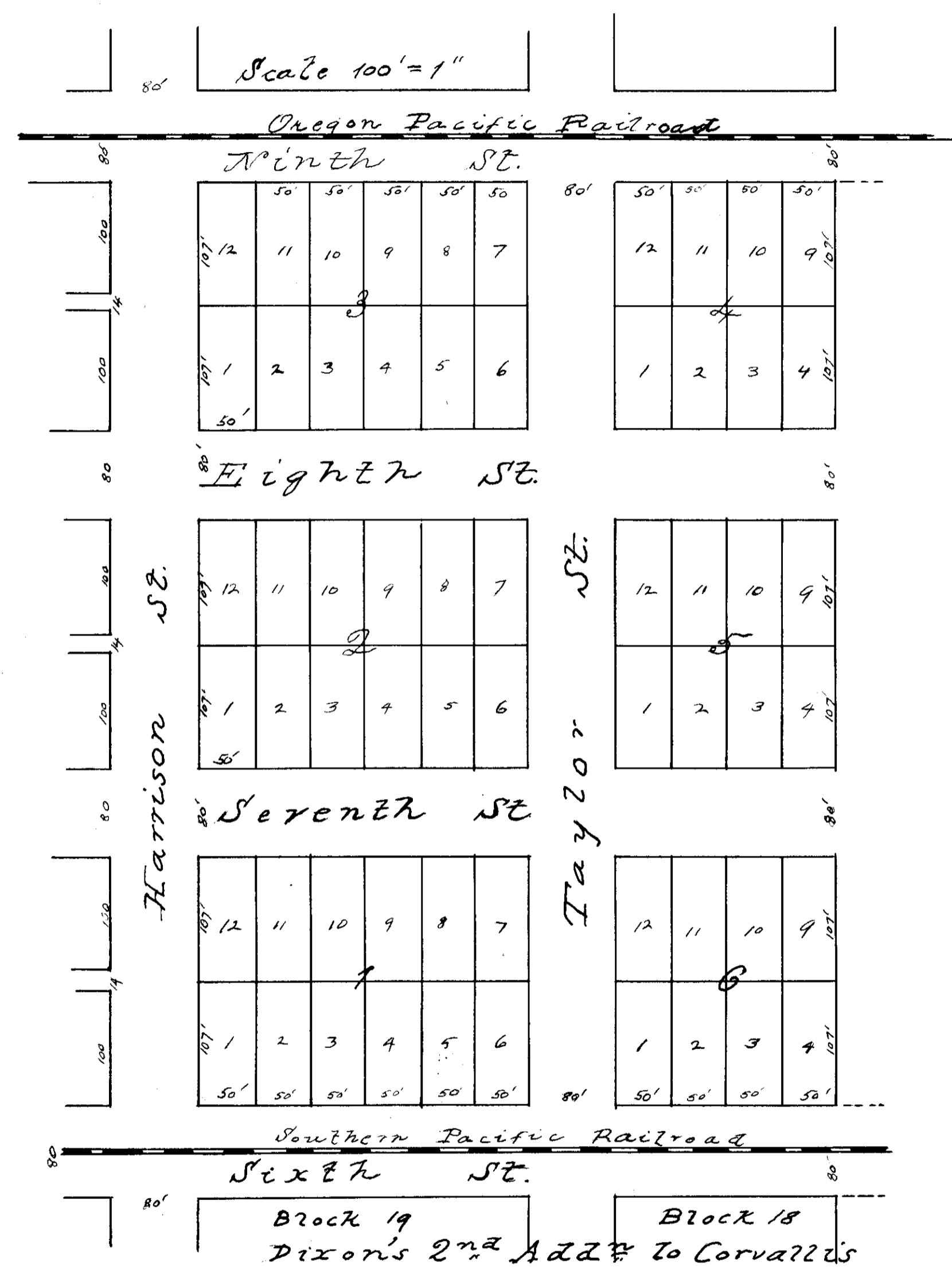


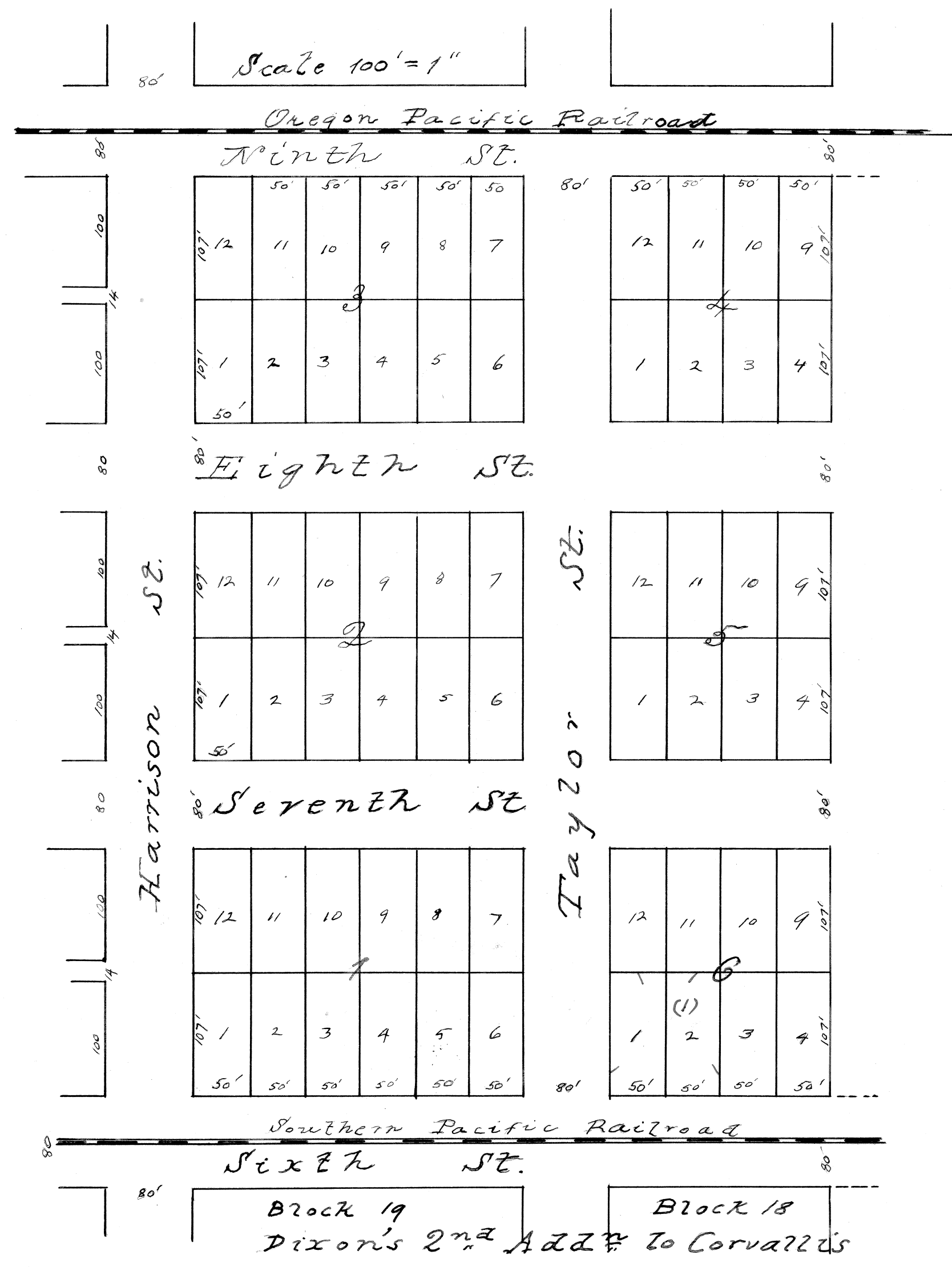
Rayburn's Addition
to the
City of Corvallis
Benton County
Oregon

with the following reservation, that the locust and maple trees now growing on the south and east lots one (1) two (2) three (3) and twelve (12) in Block one (1) in Harrison and Sixth streets marked on said plat shall for ever remain the personal property of the said J. W. Rayburn and his grantees.



Rayburn's Addition
to the
City of Corvallis
Benton County
Oregon

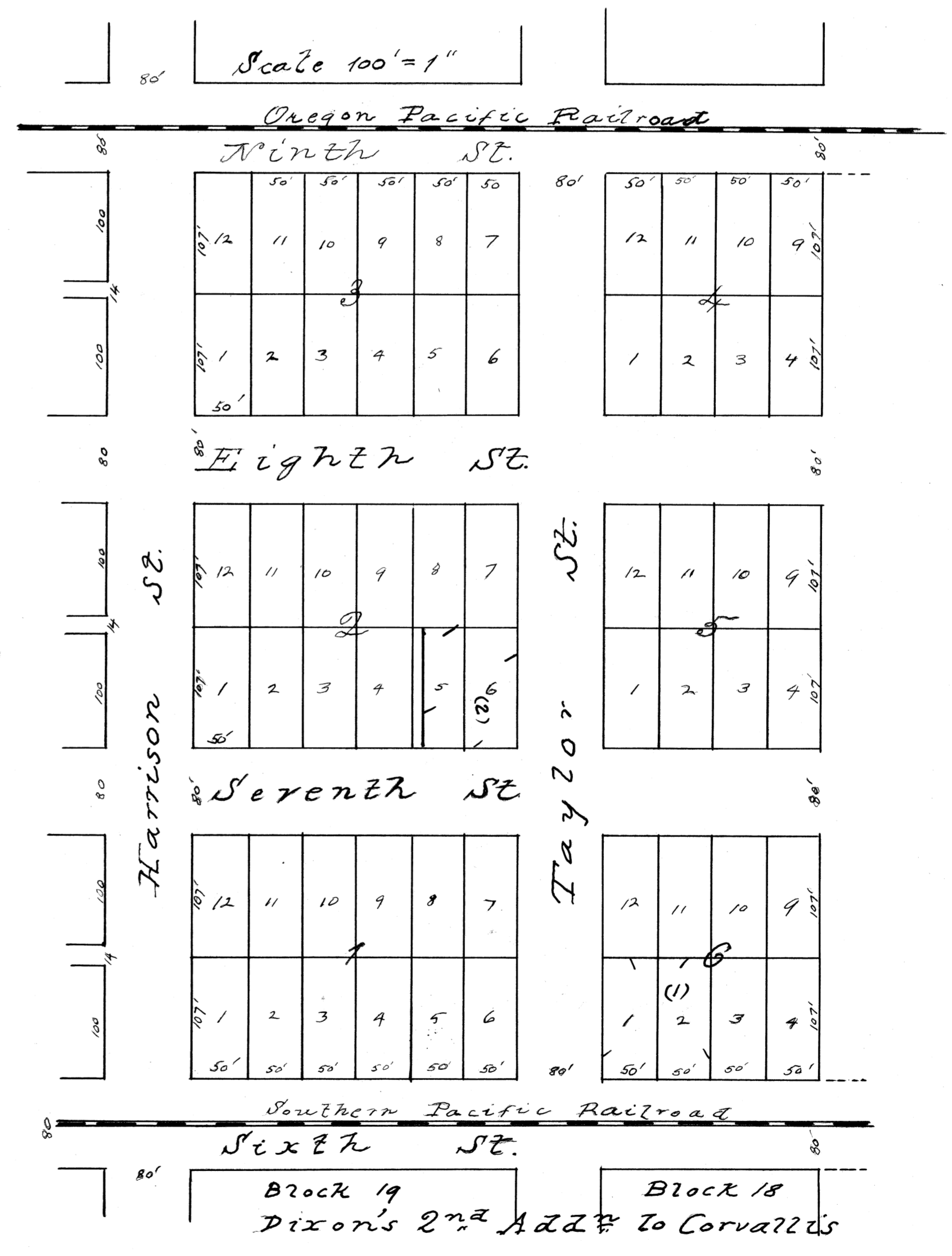
with the following reservation, that the locust and maple trees now growing on the south and east lots one (1) two (2) three (3) and twelve (12) in Block one (1) in Harrison and Sixth streets marked on said plat shall for ever remain the personal property of the said J. W. Rayburn and his grantees.



(1) VACATED PER PLAT 2010-01

Rayburn's Addition
to the
City of Corvallis
Benton County
Oregon

with the following reservation, that the locust and maple trees now growing on the south and east lots one (1) two (2) three (3) and twelve (12) in Block one (1) in Harrison and Sixth streets marked on said plat shall for ever remain the personal property of the said J. W. Rayburn and his grantee.



(1) VACATED PER PLAT 2010-01
(2) VACATED PER PLAT 2013-09