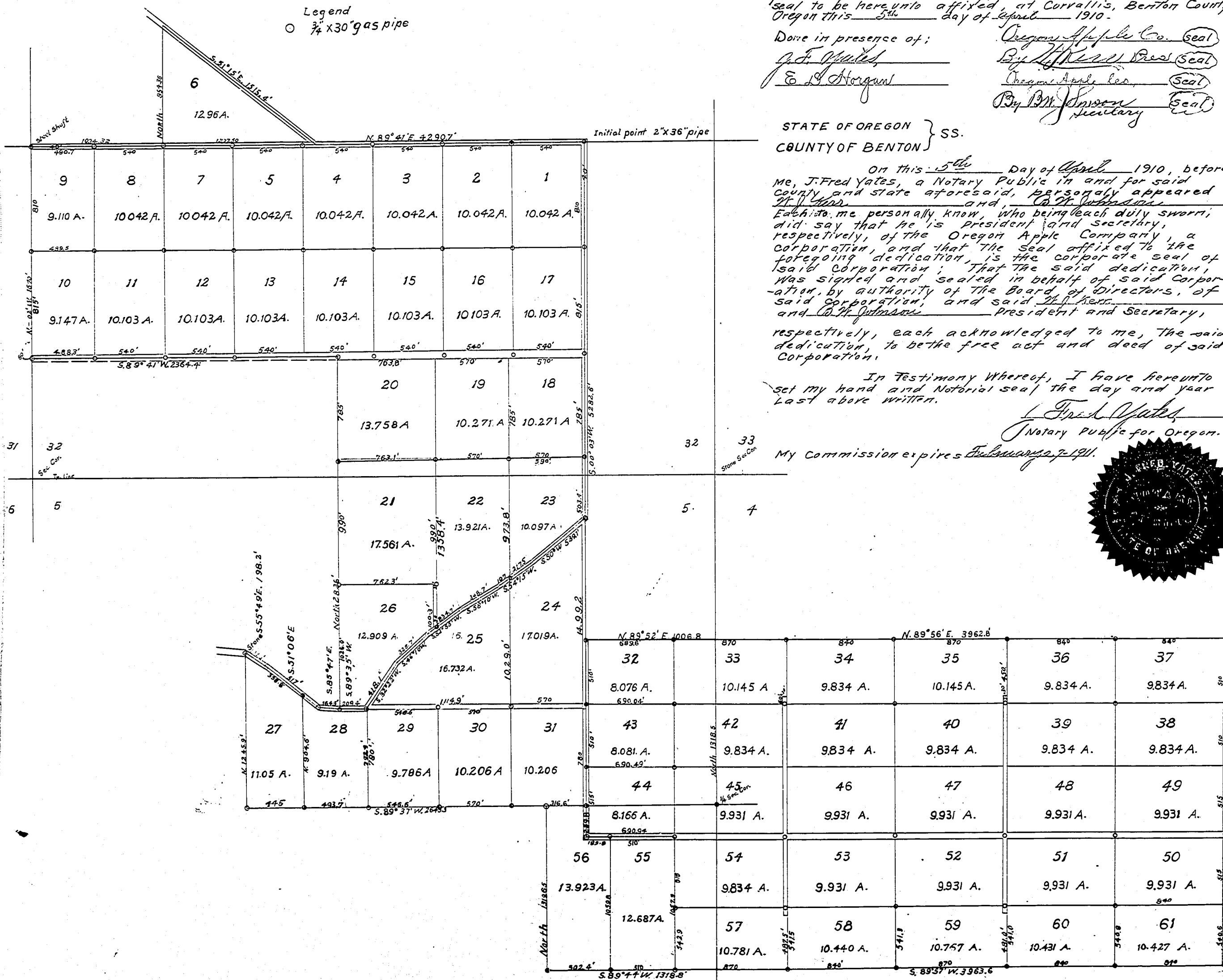


PLAT OF
OACO ORCHARDS

BENTON COUNTY OREGON

Scale - 1" = 400'

Legend
○ 3/4" x 30' gas pipe



KNOW ALL MEN BY THESE PRESENTS: That the Oregon Apple Company, a private Corporation duly organized, incorporated, authorized and existing under and by virtue of the Laws of the State of Oregon, with its principal place of business at Corvallis, Benton County, Oregon; That said Corporation in pursuance of the laws and Statutes of the State of Oregon, in such cases made and provided, has acquired and is now owner, in fee simple, of that certain tract of land laid off on this plat or map designated as OACO ORCHARDS, that on the 10th day of January, 1910, the Board of Directors of said Corporation, duly assembled in their annual session at the office of said Corporation in Corvallis, Benton County, Oregon, duly passed the following resolution, to-wit: Upon motion duly made, seconded and unanimously carried, it is resolved by the Board of Directors of the OREGON APPLE COMPANY, a private corporation of Benton County, Oregon, that the President and Secretary be and they are hereby authorized and instructed to dedicate, plat and lay off, in behalf of said Corporation, the lands of said Corporation, into tracts and roads, said tracts and roads to be known as OACO ORCHARDS and to do all and singular each and every act and thing necessary or convenient in and about the dedication of said lands and all business connected therewith.

Now therefore, in pursuance of said resolution aforesaid, said Corporation does hereby plat and lay off the tract of land shown on this plat or map, into tracts and roads as shown, designated and numbered on this plat, said tracts being numbered from 1 to 61 inclusive, and containing respectively the number of acres there on indicated and all to be known as OACO ORCHARDS, and said Corporation does hereby dedicate the roads as laid out and indicated on this plat, to the use of the public, without reservation or restriction.

IN WITNESS WHEREOF, the said Oregon Apple Company, a corporation, by resolution of its Board of Directors, has caused these presents to be subscribed to by its President and its Secretary, and caused its corporate seal to be hereunto affixed, at Corvallis, Benton County, Oregon this 5th day of April, 1910.

Done in presence of:
J. Fred Yates Notary Public for Oregon
E. J. Hergan Secretary

STATE OF OREGON } SS.
 COUNTY OF BENTON }
 On this 5th day of April, 1910, before me, J. Fred Yates, a Notary Public in and for said County and State aforesaid, personally appeared J. Fred Yates and E. J. Hergan, each to me personally known, who being each duly sworn, did say that he is President and Secretary, respectively, of the Oregon Apple Company, a Corporation, and that the seal affixed to the foregoing dedication, is the corporate seal of said Corporation; That the said dedication, was signed and sealed in behalf of said Corporation, by authority of the Board of Directors, of said Corporation, and said J. Fred Yates and E. J. Hergan, President and Secretary, respectively, each acknowledged to me, the said dedication, to be the free act and deed of said Corporation.

In Testimony Whereof, I have hereunto set my hand and Notarial seal the day and year last above written.
J. Fred Yates
 Notary Public for Oregon.
 My Commission expires February 7, 1911.

STATE OF OREGON } SS.
 COUNTY OF BENTON }
 I, F. Marvin Wilkes, being first duly sworn depose and say; That I am the duly elected, qualified and acting County Surveyor of Benton County, Oregon; That I have correctly surveyed and marked with proper monuments the Lands represented in the here to attached plat of OACO ORCHARDS, which is more fully described as follows:

Beginning at the 1/4 section corner between sections 31 & 32 in Tp. 14 S. R. 5 W. of the Will. Mer. in Benton County, Oregon; and running thence N. 89° 41' E. 65.011 chs. to a 3/4" pipe, thence S. 03° W. 80.040 chs. to a 3/4" pipe on the south line of the Robt. B. Boyd ALC.; thence S 89° 37' W. on said South line 40.080 chs. to a 3/4" pipe at the S.W. corner of the above claim, thence North on the West line of said claim 18.877 chs. to a stone in the center of the County Road, thence following center line of said road S. 55° 46' E. 3.004 chs.; thence S 51° 06' E. 7.834 chs., thence S 25° 47' E. 2.493 chs. to a 3/4" pipe in the center of the above road, thence North 42.818 chs. to a 3/4" pipe, thence S 89° 41' W. 35.824 chs. to a 3/4" pipe on the Section line, thence N - 02° W. on said line 25.303 chs. to the place of beginning; Also the following: Beginning at a point 15.52 chs. East of the above place of beginning and running thence North 14.46 chs. to the center of the County Road, thence S 51° 15' E. along said center line 22.96 chs. to the North Line of the Robt. B. Boyd ALC., thence S 69° 41' W. 17.91 chs. to place of beginning.

Also; the following, the NE 1/4 of the S.E. 1/4 of section 5, the NW 1/4 of the S.W. 1/4, the N.E. 1/4 of S.W. 1/4, the N.W. 1/4 of the S.E. 1/4, the S.W. 1/4 of the N.E. 1/4, the S 1/2 of the N.W. 1/4 of section 4, all in Tp. 15, S. R. 5 W.; Also Beginning at the S.E. corner of the N.E. 1/4 of section 5, Tp. 15 S. R. 5 W. and runs thence West 15.25 chs, thence North 20.00 chs, thence East 15.25 chs, thence South 20.00 chs. to the place of beginning

That I have marked with a 2" x 36" Galvanized pipe, set 6" below the surface of the ground, indicating the initial point referenced by the following:
 An Oak 15" in diameter bears N 13° 35' E. .735 chs
 A 3/4" pipe " S 89° 41' W 8.182 "

That the said plat is an accurate representation of said tracts of land in which said tracts and roads in said OACO ORCHARDS are laid out.
 That the Bearings shown on said plat were determined by an observation on the Sun.

Subscribed and sworn to before me this 5th day of April 1910
J. Fred Yates
 Notary Public for Oregon
 My commission Expires February 7, 1911.

STATE OF OREGON } SS.
 COUNTY OF BENTON }
 The plat hereon is approved; _____
 Dated at Corvallis, Oregon April 6th 1910.

E. Woodward
 County Judge }
Geo. W. Smith }
 Commissioner }
A. W. Hargan }
 Commissioner }
W. H. Bushard
 assessor }
F. Marvin Wilkes
 county Surveyor

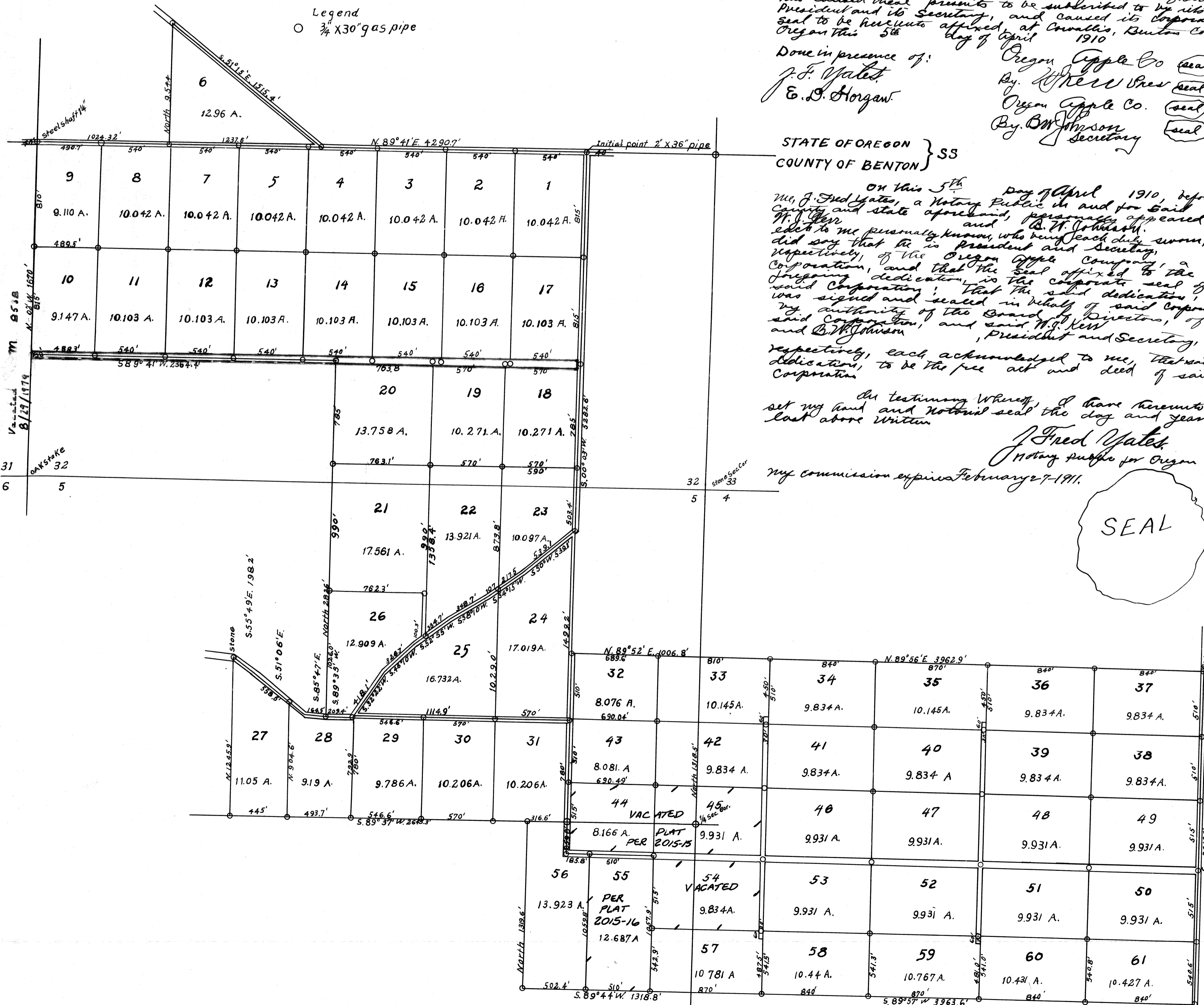
STATE OF OREGON } SS.
 County of Benton }
 I hereby certify that the within survey map was recorded on record on the 7th day of April, 1910, at 11:25 A.M. and recorded in book 3 on page 225. Record of Town Plats of said County. Witness my hand and seal of County of Benton, Oregon this 7th day of April, 1910.
George J. Johnston
 Register of Deeds

PLAT OF
OACO ORCHARDS

BENTON COUNTY OREGON

Scale - 1" = 400'

Legend
○ 3/4" X 30" gas pipe



Corporate
SEAL

KNOW ALL MEN BY THESE PRESENTS: That the Oregon Apple Company, a private Corporation, duly organized, incorporated, authorized and existing under and by virtue of the Laws of the State of Oregon, with its principal place of business at Corvallis, Benton County, Oregon; That said Corporation in pursuance of the laws and statutes of the State of Oregon in such cases made and provided has acquired and is now owner, in fee simple, all that certain tract of land laid off on this plat or map designated as OACO ORCHARDS, that on the 10th day of January 1910, the Board of Directors of said Corporation, duly assembled in their annual session at the office of said Corporation in Corvallis, Benton County, Oregon, duly passed the following resolution to-wit:

Upon Motion duly made, seconded and unamended, duly carried it is resolved by the Board of Directors of the Oregon Apple Company, a private Corporation of Benton County, Oregon, that the President and Secretary be and they are hereby authorized and instructed to dedicate plat and lay out roads, roads, tracks and the lands of said Corporation into tracts and roads, said tracts and roads to be known as OACO ORCHARDS and to do all act and singular each and every act and thing necessary or convenient in and about the dedication of said lands and all business connected therewith.

Now therefore, in pursuance of said resolution aforesaid said Corporation does hereby plat and lay out the tract of land shown on this plat or map, into tracts and roads as shown, designated and numbered on this plat, said tracts to be numbered from 1 to 61 inclusive and containing respectively the number of acres there on indicated and all to be known as OACO ORCHARDS, and said Corporation does hereby dedicate the roads as laid out and indicated on this plat, to the use of the public, without reservation or limitation.

Witness Whereof, the said Oregon Apple Company a Corporation by resolution of its Board of Directors has caused these presents to be subscribed to by its President and its Secretary, and caused its corporate seal to be hereunto affixed, at Corvallis, Benton County, Oregon this 5th day of April 1910.

Done in presence of:
J. F. Yates
E. J. Morgan

Oregon Apple Co. (seal)
By: W. H. Reed (seal)
Oregon Apple Co. (seal)
By: B. W. Johnson (seal)
Secretary

Corporate
SEAL

STATE OF OREGON }
COUNTY OF BENTON } SS

ON this 5th day of April 1910, before me, J. Fred Yates, a Notary Public in and for said County and State aforesaid, personally appeared, W. H. Reed, who to me personally known, who being each duly sworn, did say that he is President and Secretary, respectively, of the Oregon Apple Company, a Corporation, and that the seal affixed to the foregoing dedication, is the corporate seal of said Corporation; that the said dedication was signed and sealed in behalf of said Corporation, by authority of the Board of Directors of said Corporation, and said W. H. Reed, President and Secretary, respectively, each acknowledged to me, that said dedication, to be the free act and deed of said Corporation.

In testimony Whereof, I have hereunto set my hand and Notarial seal the day and year last above written.

J. Fred Yates
Notary Public for Oregon
My commission expires February 27th 1911.

SEAL

STATE OF OREGON }
COUNTY OF BENTON } SS.

O. F. Marion Wilkes, being first duly sworn depose and say; that I am the duly elected, qualified acting County Surveyor of Benton County, Oregon; I have correctly surveyed and marked with proper monuments the lands represented in the hereto attached plat of OACO ORCHARDS, which is more fully described as follows:

Beginning at the 1/4 Section Corner between sections 31 and 32 in Tp. 14 S., R. 5 W. of the Will. Mer. in Benton County, Oregon; and running thence N. 89° 41' E. 65.011 chs. to a 3/4" pipe on the South line of the Rott B. Boyd D.C.; thence S 89° 37' W. on said South line 40.040 chs. to a 3/4" pipe at the S.W. corner of the above claim; thence North on the West line of said claim 18.877 chs. to a stone in the center of the County Road, thence following the Center line of said road S. 55° 46' E. 3.004 chs.; thence S 51° 06' E. 7.834 chs.; thence S 85° 47' E. 2.493 chs. to a 3/4" pipe in the center of the above road, thence North 42.815 chs. to a 3/4" pipe, thence S 89° 41' W. 35.824 chs. to a 3/4" pipe on the Section line, thence N - 02' W. on said line 25.303 chs. to the place of beginning; also the following, Beginning at a point 15.52 chs. East of the above place of beginning and running thence North 14' 46 chs to the Center of the County Road, thence S 51° 15' E. along said center line 22.96 chs. to the North line of the Rott B. Boyd D.C.; thence S 89° 41' E. 17.91 chs. to the place of beginning.

Also, the following, the E 1/4 of the SE 1/4 of Section 5, the W 1/2 of the S.W. 1/4, the N.E. 1/4 of S.W. 1/4, the NW 1/4 of Section 4, all in Tp. 15 S., R. 5 W.; also beginning at the SE. corner of the N.E. 1/4 of Section 5, Tp 15 S., R 5 W., and runs thence West 15.25 chs, thence North 20.00 chs, thence East 15.25 chs, thence South 20.00 chs, to the place of beginning.

That I have marked with a 2" x 3/8" galvanized pipe, set 6" below the surface of the ground, indicating the initial point referenced by the following:
An oak 15" in diameter bears N 13° - 35' E 1735 chs.
a 3/4" pipe " S 89° 41' W 8.182 "

That the said plat is an accurate representation of said tract of land in which said tracts and roads in said OACO ORCHARDS are laid out.

That the bearings shown on said plat were determined by an observation on the sun.

O. F. Marion Wilkes,
Subscribed and sworn to before me this 5th day of April 1910

J. Fred Yates,
Notary Public for Oregon,
My commission Expires February 27th 1911.

STATE OF OREGON }
COUNTY OF BENTON } SS.

The plat hereon is approved;
Dated at Corvallis, Oregon, April 5th 1910.

E. Woodward,
County Judge
G. W. Smith,
Commissioner
A. W. Hawley,
Commissioner
W. H. Rickard,
Assessor
O. F. Marion Wilkes,
County Surveyor.

April 10 4 20
E. J. Newton

Corporate
SEAL

SEAL