

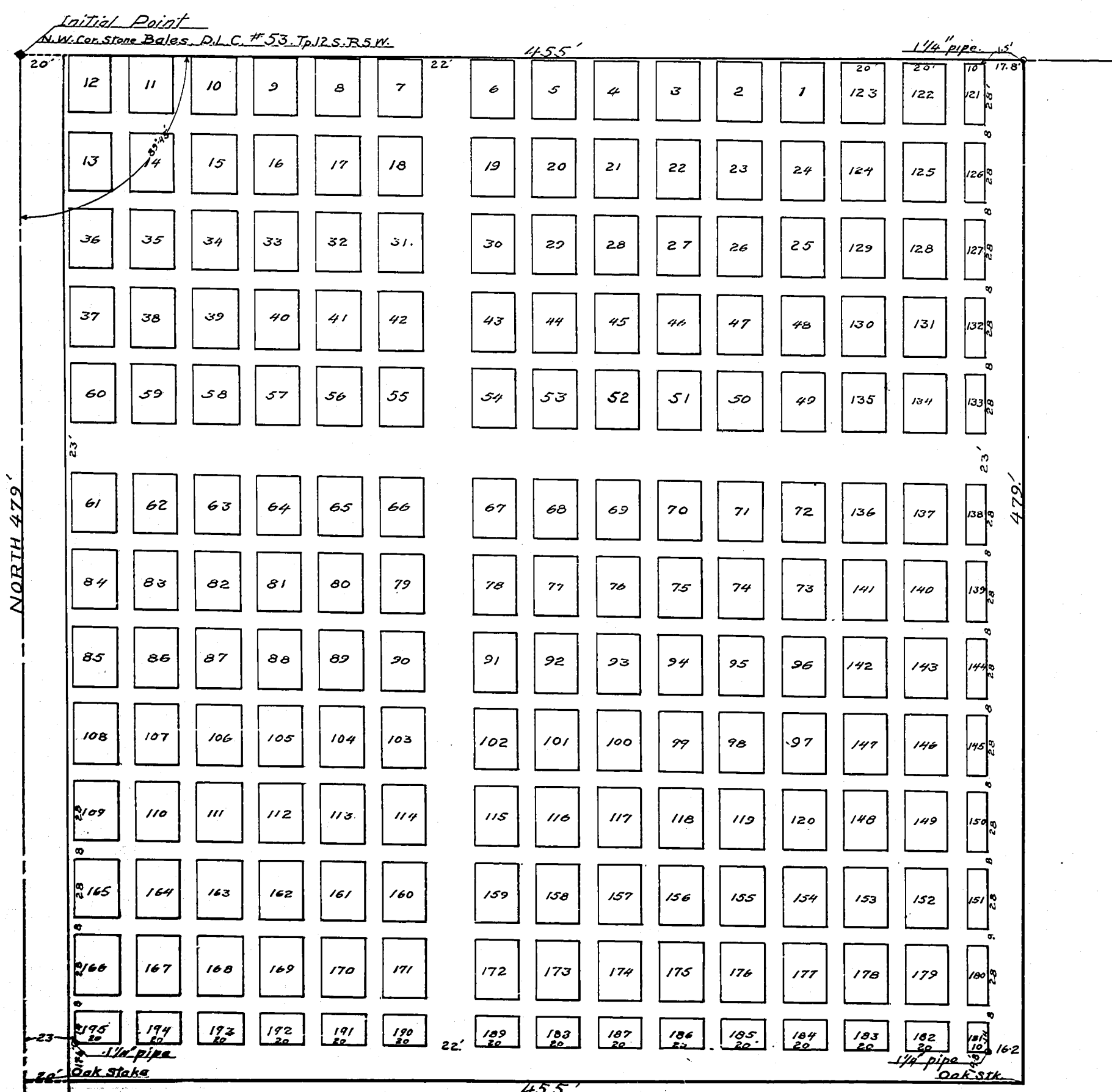
SUPPLEMENTAL PLAT  
OF  
**MT UNION CEMETERY**  
BENTON COUNTY, ORE.

Scale 1"=40'

*M. W. Wilkes*  
County, Oregon

NORTH.

Notes:-  
For MT UNION CEM.  
See BK 1, Pg 16



Know all men by these Presents, that we E. Woodward, Thos. H. Cooper and John E. Wyatt Trustees of MT. UNION CEMETERY Association, being the proprietors and owners, as such trustees, of the land shown on the annexed plat of ADDITION to MT. UNION CEMETERY, in Benton County, Oregon, a more particular description of which is shown in the affidavit of the surveyor, herein, do hereby plat and lay out said land into lots, streets and alleys as shown on the plat hereon, as an addition to MT. UNION CEMETERY, to be known as "SUPPLEMENTAL PLAT of MT. UNION CEMETERY, Benton County, Oregon." The dimensions on said plat are given in feet. We hereby dedicate the streets and alleys as shown on said plat without reservation or restriction, to the use of the public. The Original plat of MT. UNION CEMETERY, substantially as shown hereon and containing lots from 1 to 120 was recorded June 21, 1879. Book 1 page 16 of town and cemetery records, as duly transcribed, and the Addition hereby made thereto, and dedicated, containing lots from 121 to 195 as shown on this plat, and containing the parcel of land conveyed by deed by Janet Smith to said trustees on the 18th day of July 1904 recorded on page 61 book 43 Benton County Record of Deeds.

IN WITNESS WHEREOF we have hereunto set our hands and seals this 4th day of May 1910.

*E. Woodward* Seal  
In the presence of } *John E. Wyatt* Seal  
                                  } *Thos. H. Cooper* Seal  
*W. H. Richards*  
*J. H. Wilson*

TRUSTEES of MOUNT UNION  
CEMETERY ASSOCIATION

STATE of OREGON } ss.  
COUNTY of BENTON } This certifies that on this 4th day of May 1910, before me personally approved the within named E. Woodward, T. H. Cooper and John E. Wyatt, Trustee

of MOUNT UNION CEMETERY ASSOCIATION, who are known to me to be the identical individuals described in and who executed the within instrument, who acknowledged to me that they executed the same freely and voluntarily for the uses and purposes therein mentioned, and as, for the act and deed of said cemetery association.

In testimony whereof I have hereunto set hand and notarial seal the day and year just above written.  
*J. H. Wilson*  
Notary Public for Oregon.

STATE of OREGON } ss.  
COUNTY of BENTON } I F. M. Wilkes being first duly sworn say: That I am the County Surveyor of Benton County, Oregon, and duly qualified as Surveyor. That I have correctly surveyed and marked with proper monuments the land as represented on the accompanying plat, as an ADDITION to MOUNT UNION CEMETERY, which land is described as follows, to wit;

For an initial or beginning point commence at the N.W. cor. of the Chs. Bales D.L.C. #53 in T. 12 S. R. 5 W. of the Will. Mer. in Benton Co. Ore; run thence S. 89° 45' E. 455' to a 1/4" pipe, thence South 479' to an oak stake thence N. 89° 45' W. 455' to an oak stake thence North 479' to the place of beginning.

That I marked a proper stone monument 15" by 18" by 30" in size indicating the said initial point of such survey, and that the same extends six inches below the surface of the ground, and which initial point is the North West cor. of the above Don. L. C. No 53 T. 12 S. R. 5 W. of Chs. Bales.

*M. W. Wilkes*  
Subscribed and sworn to before me this fourth day of May 1910.  
*J. H. Wilson*  
Notary Public for Oregon.

This plat is hereby approved.

E. Woodward  
County Judge  
Geo. H. Smith  
County Clerk  
A. W. Hawley  
Commissioner  
W. H. Richards  
County Assessor  
*M. W. Wilkes*  
County Surveyor

FILED  
MAY 4 1910  
Walter P. Mason  
County Clerk  
Robt. Johnson  
Notary

STATE OF OREGON } ss.  
COUNTY of BENTON } I hereby certify that the within plat was approved by me on this 4th day of May 1910 at 11:30 A.M. in my office at Benton, Oregon.  
F. M. Wilkes  
County Surveyor