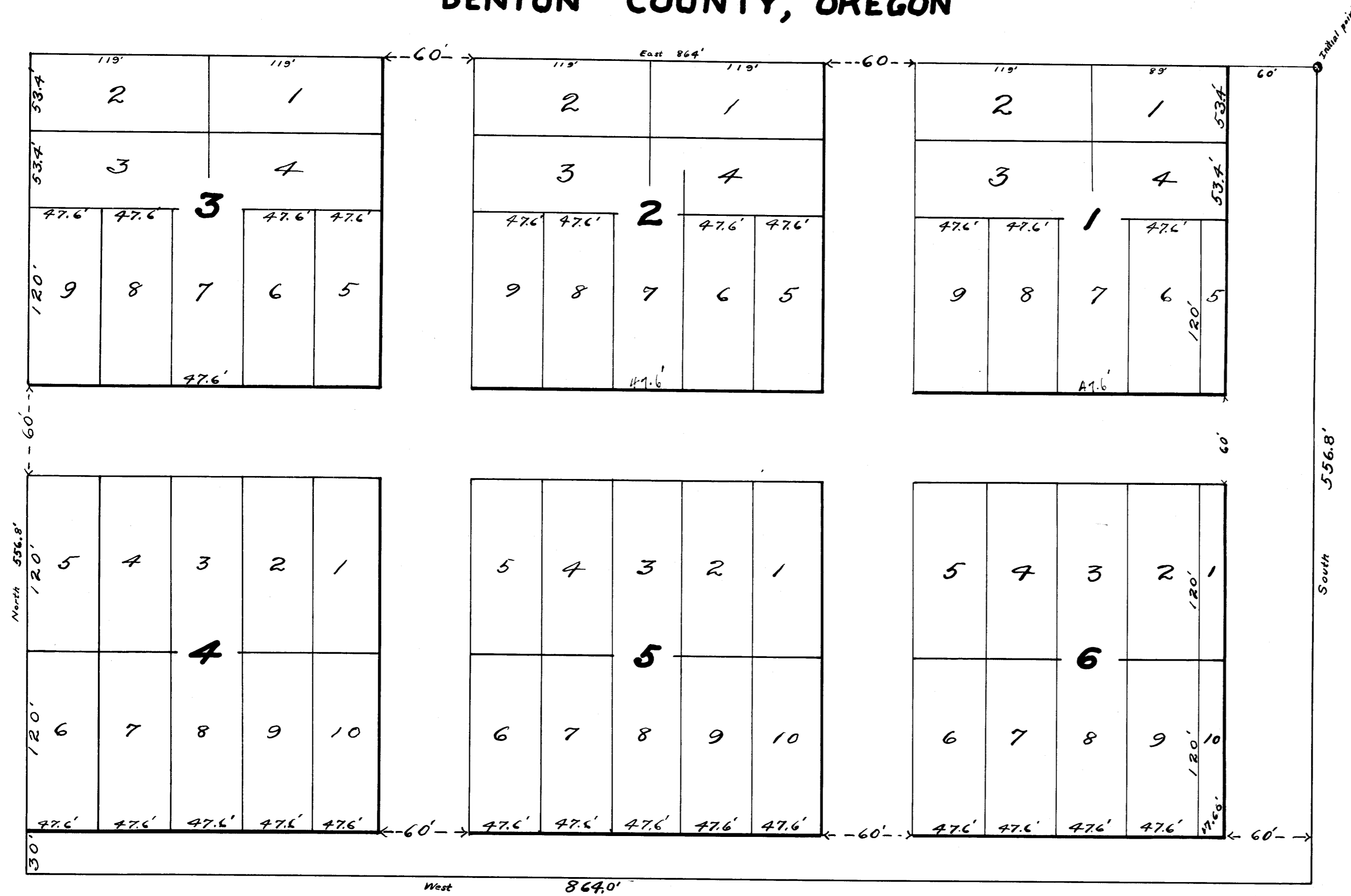


LOOKOUT ADDITION TO MONROE.

BENTON COUNTY, OREGON



DEDICATION

We the undersigned hereby certify that we are the owners in fee simple of the property included in the plat of Lookout Addition to Monroe and that we hereby lay out and establish the blocks and lots as shown on this plat and dedicate to the public the streets there on shown to be used as such forever. Witness therefor our hands and seals this 17th day of August 1911

John Carpenter
Myrtle Carpenter

Seal
Seal

ACKNOWLEDGMENT

State of Oregon
County of Benton {s.s.

On this the 17th day of August 1911 personally came before me a notary public in and for said county and state the above named John Carpenter and Myrtle Carpenter, his wife, personally known to me to be the identical persons who, executed the above dedication and acknowledged to me that they ~~they~~ executed the same freely and voluntarily for the uses and purposes there in named. In witness whereof I have here unto set my hand and official seal this day of August 1911

J. J. Carpenter
Notary Public

SURVEYOR'S CERTIFICATE

State of Oregon {s.s.
County of Benton

I hereby certify that I am a Civil Engineer of Eugene Lane County Oregon, and that I have correctly surveyed and marked with proper monuments the land represented on the plat of Lookout Addition to Monroe and that I planted for initial point a stone 6x6x12 inches, marked with a cross at exact point of contact 220 feet south of the 1/4 section corner between sec's 28 and 33 of Tp. 14 S. R. 5 W. WM and BL. Subscribed and sworn to before me this 15th day of Aug. 1911

Notary Public
S. H. Russell, County Clerk
By H. S. Gault, Deputy

Initial Count
Check Count
Eng. H. S. Gault

DESCRIPTION

Beginning at the initial point and running thence South 556.8 feet thence west 864.0 feet, thence North 556.8 feet thence East 864.0 feet to the place of beginning

Approved

V. C. Moses
A. W. Hawley
F. M. Wickes
W. H. Richard

County Judge
County Commissioner
County Surveyor by Mr. C. Gallaway, Deputy
County Assessor

Sept 1911
Town Plat
S. W. Warfield

Ernest J. Newton
Oreg. Board of Survey