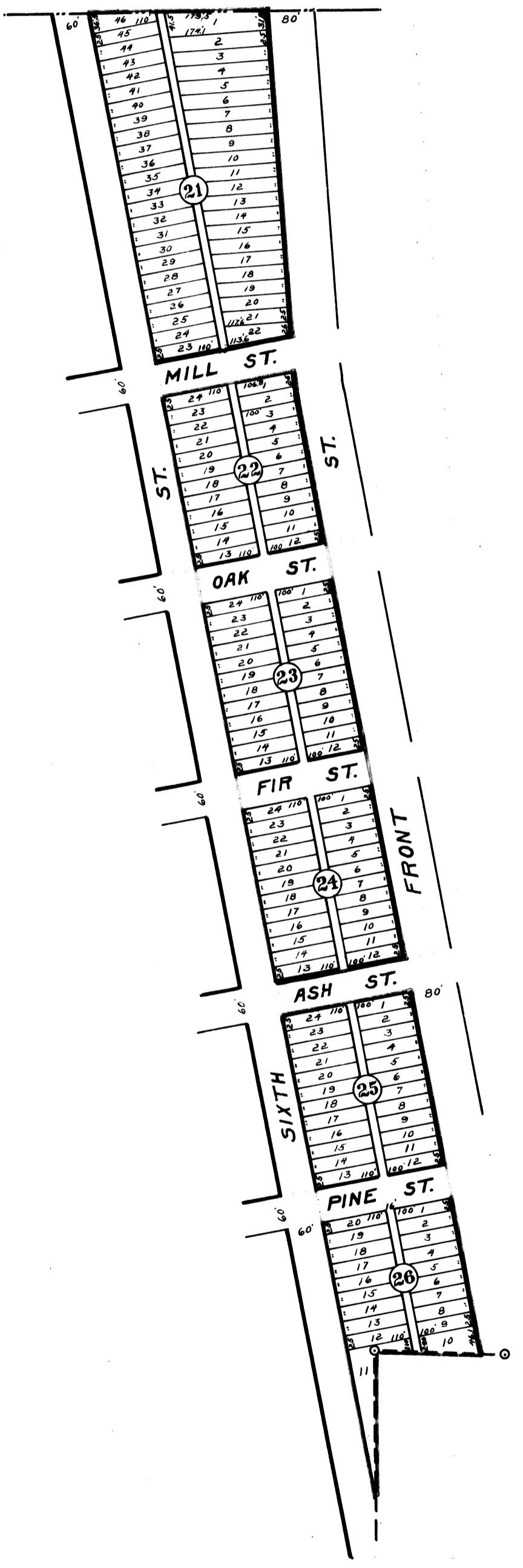


VACATION PLAT OF A PART OF **PACIFIC ADDITION** TO **MONROE**

County Court Journal, Book 9, page 87



I hereby certify this copy to be a true and correct copy of the original filed on record in my office.
DANIEL G. BLAIR
Director of Records and Land
By *Franklin Malott*
Deputy

STATE OF OREGON }
County of Benton }
I hereby certify that the within instrument was received for record on the 15th day of February, 1912, at 11:45 o'clock A.M., and recorded in book 2 on page 87 Record of Blacks of said County.
Witness my hand and seal of County
S. M. Wardfield
Recorder of Instruments

FILED
DEC 8 0 1912
Emory J. Winters
County Clerk