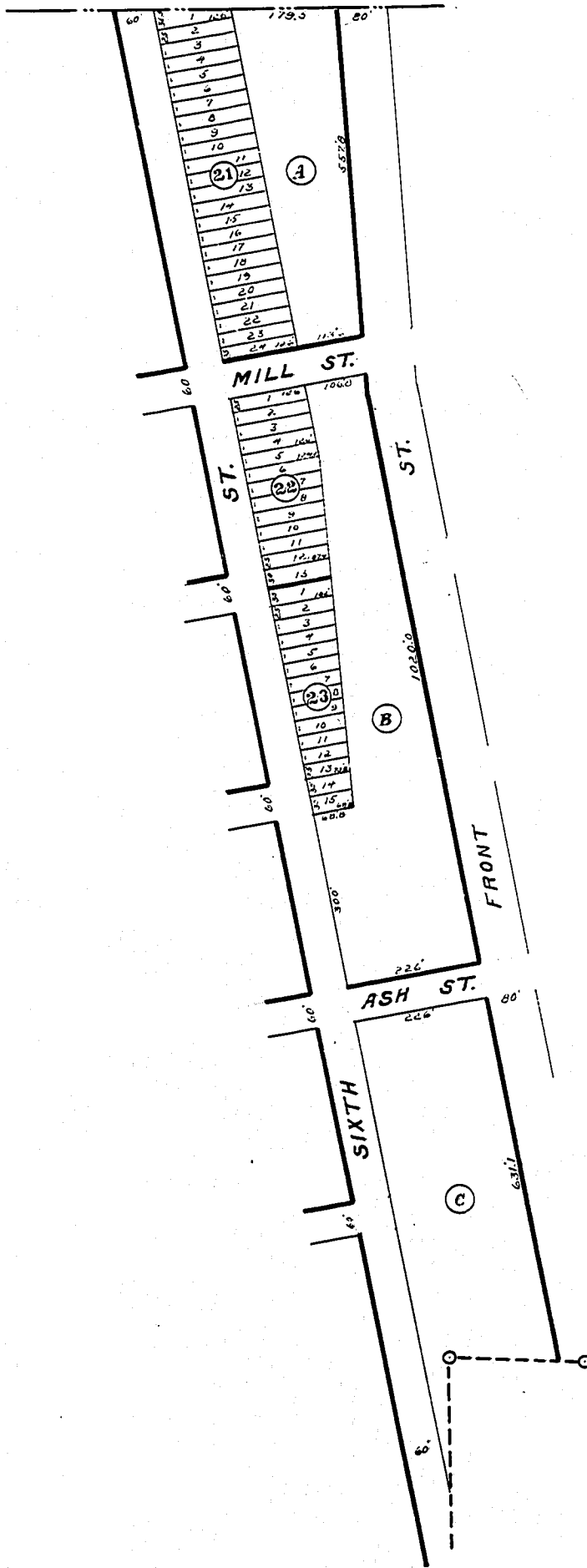


AMENDED PLAT OF PACIFIC ADDITION TO MONROE



DESCRIPTION.

The herewith plat entitled "AMENDED PLAT OF PACIFIC ADDITION TO MONROE" embraces that part of the original plat of Pacific Addition to Monroe, described as follows, to-wit: Blocks 21, 22, 23, 24, 25 and 26, together with the alleys running through same, that part of Pine, Fir and Oak Streets, lying between the west side of Front Street and the east side of Sixth Street, all in Benton County, Oregon.

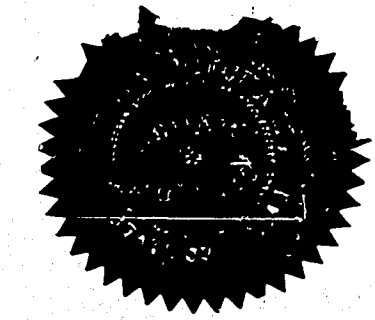
DEDICATION.

Know all men by these presents that we the Pacific Land Company, a corporation duly organized and existing under the laws of the State of Oregon, are the owners of the land described in the foregoing description; and we further certify that we caused the same to be subdivided and platted as shown on the herewith plat to be known as AMENDED PLAT OF PACIFIC ADDITION TO MONROE and we hereby dedicate to public use forever all streets as shown on said plat. In witness whereof the Pacific Land Company has caused these presents to be signed by its President and Secretary and its corporate seal to be affixed here-to, in accordance with a resolution of its Board of Directors heretofore duly adopted, this 6th day of February 1913.

In presence of
F. Cowdrey The Pacific Land Company, President.
Ed. Glushko Secretary.

ACKNOWLEDGMENT.

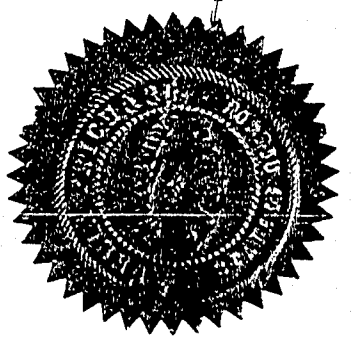
State of Oregon }
County of Multnomah } ss
On this 6th day of February 1913 personally appeared before me a Notary Public in and for said County and State the within named A. Welch and E. W. Hall to me personally known, who being each by me duly sworn did say that they are the President and Secretary respectively of the Pacific Land Company, a corporation; and that the seal affixed to the foregoing instrument is the corporate seal of said Corporation; and that the foregoing instrument was signed and sealed in behalf of said Corporation by authority of its Board of Directors; and said A. Welch and E. W. Hall acknowledge the foregoing instrument to be the free act and deed of said Corporation. In witness whereof I have hereunto set my hand and affixed my official seal this 6th day of February 1913.



SURVEYOR'S CERTIFICATE.

State of Oregon } ss
County of Lane }
I, Philip P. Thomas, being first duly sworn on oath say that I am a Surveyor, that I have surveyed the land represented on the within AMENDED PLAT OF PACIFIC ADDITION TO MONROE and above described; that I have correctly surveyed and marked with proper monuments the said land as represented on such plat; that I planted a proper monument indicating the initial point of such survey and of such plat, to-wit: a galvanized iron pipe 1 1/4 inches in diameter and three feet long, driven six inches below the surface of the ground; that said monument was planted and said initial point is located at the south 1/4 corner of Section 26 Township 14 South of Range 3 West of the Willamette Meridian; that the foregoing and within description accurately describes the tract of land upon which said lots and blocks are laid out.

Subscribed and sworn to before me this 6th day of February 1913.
Philip P. Thomas
Notary Public for Oregon.

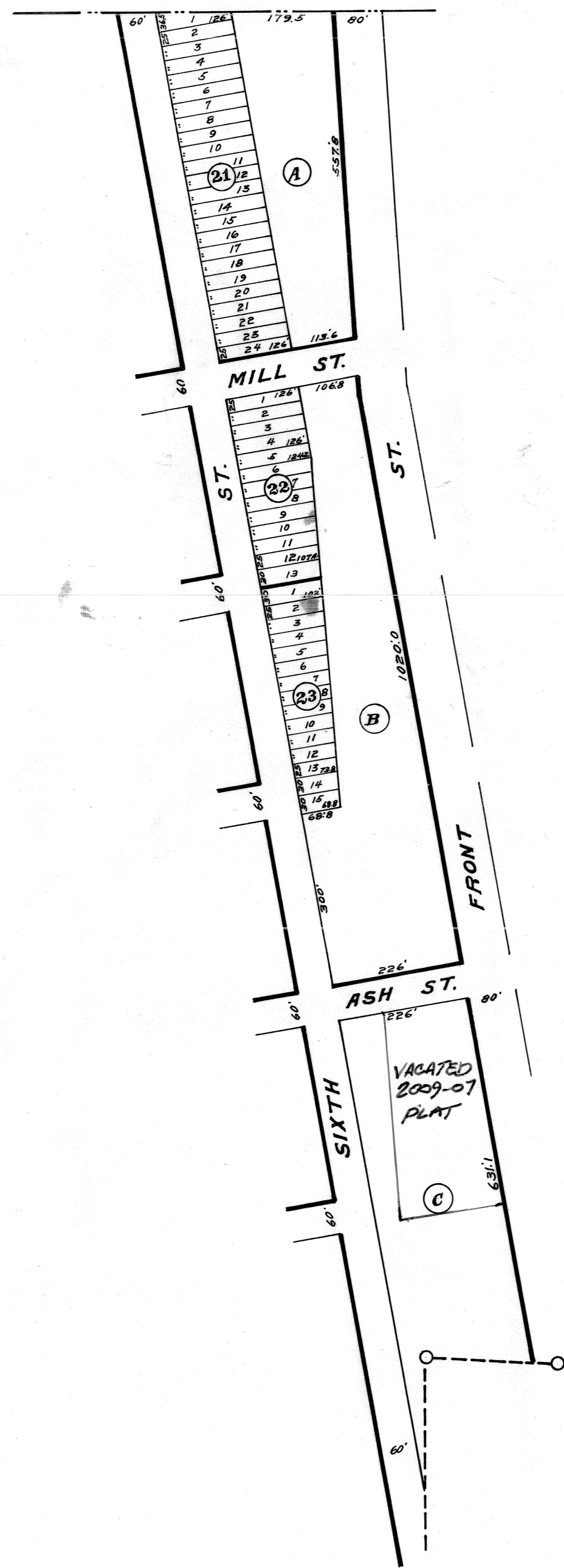


Approved this 10th day of February 1913.
W. C. Falloway County Surveyor.
W. H. Richard County Assessor.
Victor P. Moore County Judge.
W. J. Smith County Commissioner.
A. Benson County Commissioner.

STATE OF OREGON } ss
County of Benton }
I hereby certify that the within instrument was received for record on the 16th day of February 1913 at 11:15 o'clock A. M. and recorded in book 3 on page 37 of said County. Witness my hand and seal of County at 11:15 A. M. this 16th day of February 1913.
L. O. Wadsworth
Recorder of Conveyances.

Deputy.

AMENDED PLAT OF PACIFIC ADDITION TO MONROE



DESCRIPTION.

The herewith plat entitled "AMENDED PLAT OF PACIFIC ADDITION TO MONROE" embraces that part of the original plat of "PACIFIC ADDITION TO MONROE" described as follows, to-wit: Blocks 21, 22, 23, 24, 25, and 26, together with the alleys running through same; that part of Five Ten and Oak Streets, lying between the west side of Front Street and the east side of Sixth Street, all in Benton County, Oregon.

DEDICATION.

Know all men by these presents that we the Pacific Land Company, a corporation duly organized and existing under the laws of the State of Oregon, are the owners of the land described in the foregoing description; and we further certify that we caused the same to be subdivided and platted as shown on the herewith plat to be known as "AMENDED PLAT OF PACIFIC ADDITION TO MONROE" and we hereby dedicate to public use forever all streets as shown on said plat.

In witness whereof the Pacific Land Company, has caused these presents to be signed by its President and Secretary and its corporate seal to be affixed here to, in accordance with a resolution of its Board of Directors heretofore duly adopted, this

6th day of February 1913.
 In presence of: The Pacific Land Company,
F. W. Waters President.
Ed. H. H. H. H. Secretary.

ACKNOWLEDGMENT.

State of Oregon }
 County of Multnomah } ss
 On this 6th day of February 1913, personally appeared before me a Notary Public in and for said County and State the within named E. Welch and E. W. Hall to me personally known, who being each by me duly sworn did say that they are the President and Secretary respectively of the Pacific Land Company, a corporation; and that the seal affixed to the foregoing instrument is the corporate seal of said Corporation; and that the foregoing instrument was signed and sealed in behalf of said Corporation by authority of its Board of Directors and said E. Welch and E. W. Hall acknowledge the foregoing instrument to be the free act and deed of said Corporation.
 In witness whereof I have hereunto set my hand and affixed my official seal this 6th day of February 1913.

Adelia Prichard,
 Notary Public for Oregon.

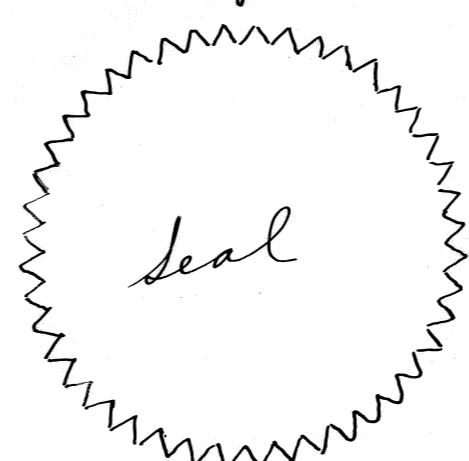
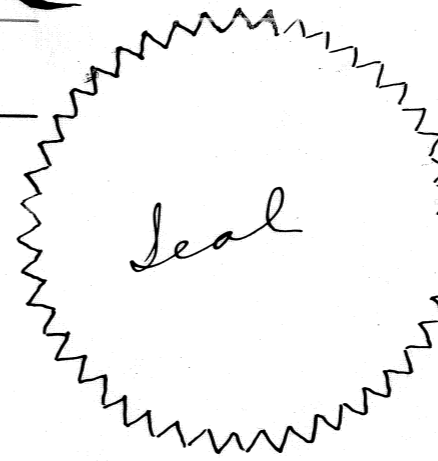
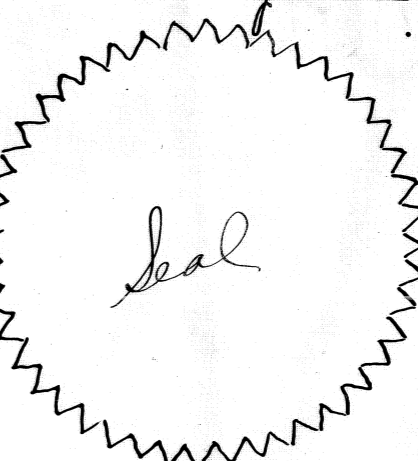
SURVEYOR'S CERTIFICATE.

State of Oregon } ss
 County of Lane }

I, Philip P. Thomas, being first duly sworn or oath say that I am a surveyor; that I have surveyed the land represented on the within "AMENDED PLAT OF PACIFIC ADDITION TO MONROE" and above described; that I have correctly surveyed and marked with proper monuments the said land as represented on said plat; that I planted a proper monument on each of the initial points of said survey, and of such plat, to-wit: a galvanized iron pipe two inches in diameter and three feet long, driven six inches below the surface of the ground; that said monument was planted and said initial point is located at the south to corner of Section 25 Township 14 South of Range 3 West of the Willamette Meridian; that the foregoing and with its description accurately describes the tract of land upon which said lots and blocks are laid out.

Philip P. Thomas
 Subscribed and sworn to before me this 6th day of February 1913.

Adelia Prichard
 Notary Public for Oregon.



Approved this 18th day of February 1913.
W. C. Callaway County Surveyor.
W. H. Richard County Assessor.
Victor P. Moses County Judge.
Geo. H. Smith County Commissioner.
A. H. Vernon County Commissioner.