

# ARNOLD HEIGHTS ADDITION TO THE CITY OF CORVALLIS, BENTON COUNTY, OREGON

KNOW ALL MEN BY THESE PRESENTS, That WE, J.W. Rogers, Flora D. Rogers, his wife, J.A. Kerr and Louisa J. Kerr, his wife, the owners in fee simple of the tract of land laid out on this plat, do hereby plat and lay the same off into lots, blocks, streets and alleys as designated on this plat and to be known as Arnold Heights Addition to Corvallis, Oregon, and do hereby dedicate the streets and alleys as hereon platted to the use of the public.

IN WITNESS WHEREOF, WE have hereunto set our hands and seals this, the 16<sup>th</sup> day of June, A.D. 1916.

Witnessed By:  
*J.W. Morgan* (Seal)  
*Flora D. Rogers* (Seal)  
*J.A. Kerr* (Seal)  
*Louisa J. Kerr* (Seal)

STATE OF OREGON  
 County of Benton } S.S.

BE IT REMEMBERED, That on this 16<sup>th</sup> day of June, A.D. 1916 before me, the undersigned, a Notary Public in and for said County and State, personally appeared the above named J.W. Rogers, Flora D. Rogers, his wife, J.A. Kerr and Louisa J. Kerr, his wife, who are known to me to be the identical individuals described in and who executed the within dedication and acknowledged to me that they executed the same freely and voluntarily.

IN TESTIMONY WHEREOF, I have hereunto set my hand and Notarial Seal the day and year last above written.  
*J.W. Morgan*  
 Notary Public for Oregon.  
 My Commission Expires March 13 - 1917

The Plat and Dedication hereon are approved this 16<sup>th</sup> day of June, A.D. 1916.

*H.H. Malone*  
 County Judge  
*A. Johnson*  
 County Commissioner  
*W.A. Jolly*  
 County Commissioner  
*Fred J. Porter*  
 City Engineer City of Corvallis  
*Lula Newhouse*  
 Depy. County Assessor

I hereby certify that all taxes and assessments on said property are paid.

*W.A. Young* by *W.C. Young* Deputy  
 Sheriff and Ex Officio  
 Tax Collector

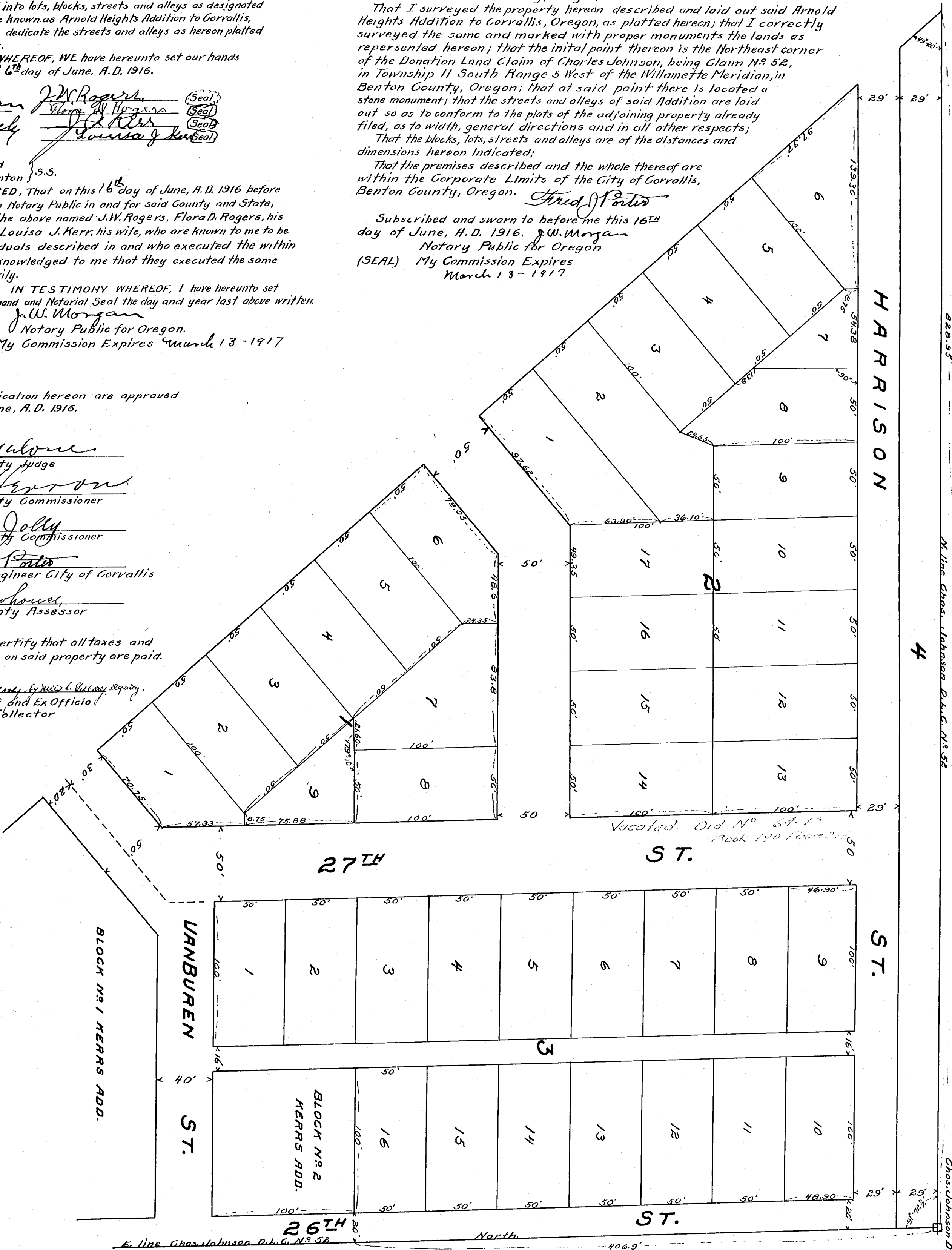
STATE OF OREGON } S.S.  
 COUNTY OF BENTON }

I, Fred J. Porter, being first duly sworn, depose and say that I am a surveyor and the duly appointed, qualified and acting City Engineer of the City of Corvallis in Benton County, Oregon;

That I surveyed the property hereon described and laid out said Arnold Heights Addition to Corvallis, Oregon, as platted hereon; that I correctly surveyed the same and marked with proper monuments the lands as represented hereon; that the initial point thereon is the Northeast corner of the Donation Land Claim of Charles Johnson, being Claim No 52, in Township 11 South Range 5 West of the Willamette Meridian, in Benton County, Oregon; that at said point there is located a stone monument; that the streets and alleys of said Addition are laid out so as to conform to the plats of the adjoining property already filed, as to width, general directions and in all other respects;

That the blocks, lots, streets and alleys are of the distances and dimensions hereon indicated;  
 That the premises described and the whole thereof are within the Corporate Limits of the City of Corvallis, Benton County, Oregon.

Subscribed and sworn to before me this 16<sup>th</sup> day of June, A.D. 1916.  
*J.W. Morgan*  
 Notary Public for Oregon  
 (SEAL) My Commission Expires March 13 - 1917



FILED  
 JUN 17 1916  
*Emory J. Howler*  
 County Clerk

STATE OF OREGON }  
 County of Benton }  
 I hereby certify that the within plat and dedication were filed for record on the 17<sup>th</sup> day of June, A.D. 1916.  
 Filed for record on the 17<sup>th</sup> day of June, A.D. 1916.  
*Emory J. Howler*  
 County Clerk

Stone N.E. corner  
 Charles Johnson D.L.C. No 52

# ARNOLD HEIGHTS ADDITION TO THE CITY OF CORVALLIS, BENTON COUNTY, OREGON.

KNOW ALL MEN BY THESE PRESENTS, That WE, J. W. Rogers, Flora D. Rogers his wife, J. A. Kerr and Louisa J. Kerr, his wife, the owners in fee simple of the tract of land laid out on this plat, do hereby plat and lay the same off into lots, blocks, streets and alleys as designated on this plat and to be known as Arnold Heights Addition to Corvallis, Oregon, and do hereby dedicate the streets and alleys as hereon platted to the use of the public.

IN WITNESS WHEREOF, WE have hereunto set our hands and seals this the 16<sup>th</sup> day of June, A. D. 1916.

Witnessed By

STATE OF OREGON }  
COUNTY OF BENTON } s.s.

I, Fred J. Porter, being first duly sworn, depose and say that I am a surveyor and the duly appointed, qualified and acting City Engineer of the City of Corvallis in Benton County, Oregon.

That I surveyed the property hereon described and laid out said Arnold Heights Addition to Corvallis, Oregon, as platted hereon; that I correctly surveyed the same and marked with proper monuments the lands as represented hereon; that the initial point thereon is the Northeast corner of the Donation Land Claim of Charles Johnson, being Claim N<sup>o</sup> 52 in Township 11 South Range 5 West of the Willametta Meridian, in Benton County, Oregon, that at said point there is located a stone monument, that the streets and alleys of said addition are laid out so as to conform to the plats of the adjoining property already filed, as to width, general directions and in all other respects.

That the blocks, lots, streets and alleys are of the distances and dimensions hereon indicated.

That the premises described and the whole thereof are within the Corporate Limits of the City of Corvallis, Benton County, Ore.

*Fred J. Porter*

Subscribed and sworn to before me this 16<sup>th</sup> day of June, A. D. 1916

Notary Public for Oregon  
(Seal) My Commission Expires

STATE OF OREGON }  
County of Benton } s.s.

BE IT REMEMBERED, That on this 16<sup>th</sup> day of June, A. D. 1916 before me, the undersigned, a Notary Public in and for said County and State, personally appeared the above named J. W. Rogers, Flora D. Rogers, his wife, J. A. Kerr and Louisa J. Kerr, his wife, who are known to me to be the identical individuals described in and who executed the within dedication and acknowledged to me that they executed the same freely and voluntarily.

IN TESTIMONY WHEREOF, I have hereunto set my hand and Notarial Seal the day and year last above written.

Notary Public for Oregon.  
My Commission Expires

(SEAL)

The Plat and Dedication hereon are approved this 16<sup>th</sup> day of June, A. D. 1916

*W. A. Malone*  
County Judge

*J. C. Harrison*  
County Commissioner

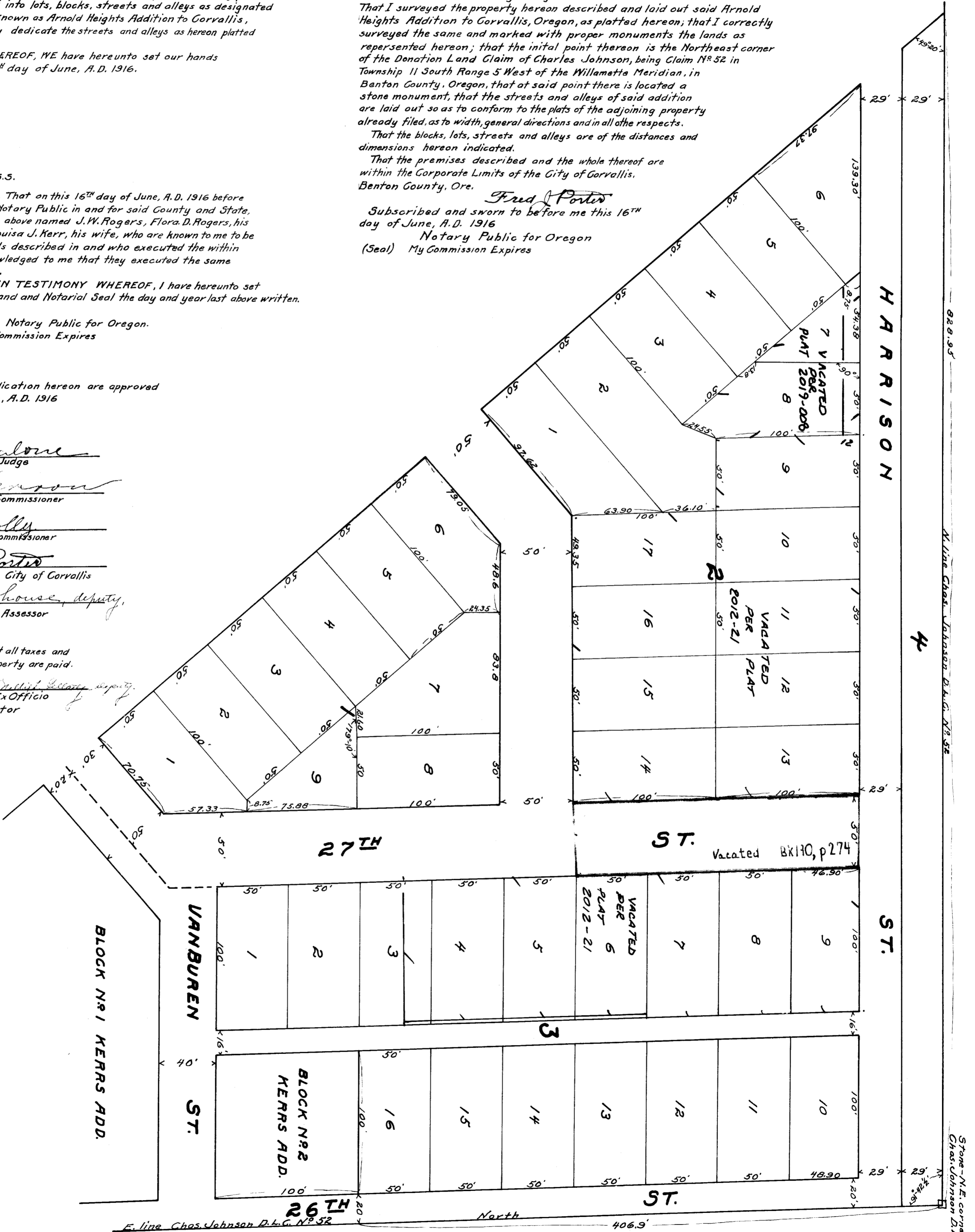
*W. A. Jolly*  
County Commissioner

*Fred J. Porter*  
City Engineer City of Corvallis

*Lula Burhouse, deputy*  
County Assessor

I hereby certify that all taxes and assessments on said property are paid.

*W. A. Gately, deputy*  
Sheriff and Ex Officio  
Tax Collector



Stone - N. E. corner  
Chas. Johnson D.L.C. N<sup>o</sup> 52.

Page 12 Book 910 A.